



English
Path



Student Handbook

2025

Paris



Welcome to
English Path.

This guide will help
you make the most
of your experience
at EP Paris.

Contents

About Paris 4

About the school..... 6

About your course..... 8

Accommodation 11

Social programme 17

Recommendations 18

When you arrive 19

Airport transport 21



About Paris



Famous landmarks

- Eiffel Tower, Champs-Élysées, Centre Pompidou, Musée du Louvre, Notre-Dame cathédral, Palais Opéra Garnier, Galeries Lafayette.



City personality

- Academic, active, artistic, big city, bike-friendly, business capital, creative, moving, multi-cultural, eco-friendly, foodie scene, historical, friendly, green, iconic city, modern, unique, vibrant, youthful, world-renowned capital.



What makes this town unique?

- Paris is unique due to its unparalleled blend of history, culture, art, and romance; encapsulated within its iconic landmarks, culinary delights, and vibrant atmosphere.



Transport within a 10 minute walk

- Métro, bus, tramway and RER.



Restaurants within a 10-minute walk

- American, British, Chinese, French, Greek, Indian, Italian, Japanese, Korean, Mexican, Seafood, Thai, Vegetarian, Moroccan. Street food and gastronomy at each corner.



Alternative things to do

- Get lost among the many museums, touristic sites, exhibitions and events all year long! Sporty? The 2024 Olympics showed how many diverse sports are available for people to enjoy in the city.

5

Reasons to choose this city

1

A well-connected city: nine train stations, two airports. True freedom.

2

A beautiful city with rich architectural diversity.

3

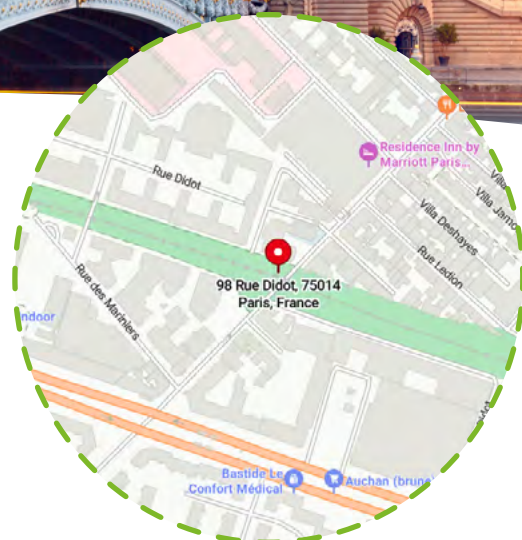
Home of gastronomy and a variety of cuisine.

4

European capital of culture (historical sites & museums).

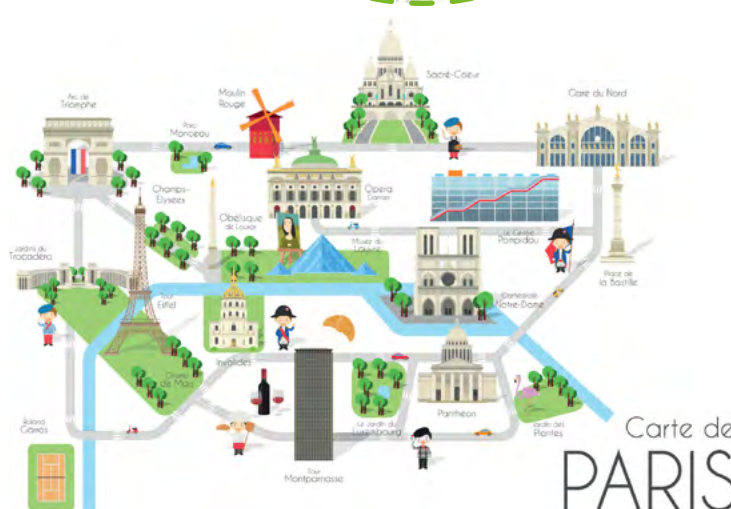
5

Within the city there are seven universities and ten others nearby.



Why choose to study on our Paris campus?

- **Located** within Paris, in a safe and educational environment
- **Minutes from** subway station and buses
- **Interesting** & varied courses offered
- **New** installations, and high-end equipment
- **Experienced** customer experience & academic team



Find us on Google maps



La certification qualité a été délivrée au titre de la catégorie d'action suivante : **ACTIONS DE FORMATION**

Address: 98 Rue Didot, 75014 Paris, France
At this address since: 2024

Phone: +330753035918
Emergency phone: +33753197437

Staff

Meet the team



- **Languages spoken by staff:** French, English, Italian, Spanish.

Services & facilities

- **Buildings:** 1
- **Floors:** 2
- **Total number of classrooms:** 3+
- **Campus capacity:** 100 students

School facilities: Student lounge, self-study area with PC equipped, Wi-Fi (free), elevator for students with mobility issues, modern & spacious classrooms with smart TVs.

Other services provided: Social activity programme, airport transfers, medical insurance.

Levels of English and French offered: All levels.

Reception: The friendly **student services** staff can direct you to the EP offices and classrooms. A **student services officer** and an **academic coordinator** will always be present to answer any questions you may have.

School holidays & Paris public holidays

The school is going to be closed on the below dates. Please make sure to book your course/accommodation accordingly. Course days that fall on a public holiday are not reimbursed.

Public holidays will be:

- **2025:** 01 Jan, 18 - 21 Apr, 01 May, 08 May, 29 May, 08 Jun, 9 Jun, 14 Jul, 15 Aug, 01 Nov, 11 Nov.

The above dates are observed as holidays in the year. If you arrive on a week where the Monday is a holiday, your first day of school will be a Tuesday.



Close to your EP school

Our centrally located school is walking distance to:

- | | |
|---|---|
| Cafes and restaurants
1-5 Minutes | Montparnasse train station
25 Minutes |
| Grocery store
4 Minutes | Subway station
8 Minutes |
| Post office
5 Minutes | Bus stop
2-5 Minutes |
| Hospital
9 Minutes | Mall
17 Minutes |
| Bank/ atm
5 Minutes | Gym
4 Minutes |

Need help? Not satisfied? Have a problem?

At EP we believe that communication and an open-door policy is key to efficiently resolving any issue you might have. If you need help, are not satisfied with one of our services or you need advice, please talk to our staff at school. They will be able to help and assist quickly with any concerns you may have.

Your first day at school

Morning students

Also for Semi-Intensive Afternoon

- 08:45 – Arrival at school + check in
- 09:10 – Writing and speaking placement test
- 10:00 – Induction
- 11:00 – First day class starts
- 12:30 – First day class finishes
- 12:30 – Orientation tour

Afternoon students

- 12:00 – Arrival at school + check in
- 12:05 – Writing and speaking placement test
- 12:15 – Orientation tour
- 12:30 – Elective or induction (if classic)
- 13:45 – Classes until 17:00

Induction: this includes a placement test, induction presentations about the school, academic programmes and the distribution of class timetables.

An orientation tour of the local area: this includes useful information, such as nearby facilities, pharmacy, post office, bus stop, etc.

On your first day, please bring your passport and proof of medical insurance.

Your weekly class timetable

French Courses

	Hours pw	What	Lesson times
Classic Morning	15	General French	9:00 - 12:15
Semi-Intensive Morning	20	Classic Morning + 1 Elective	9:00 - 13:30

English Courses

	Hours pw	What	Lesson times
Classic Afternoon	15	General English	13:45 - 17:00
Semi-intensive Afternoon	20	Classic Afternoon + 1 Elective	12:30 - 17:00

Courses

French or English

- **Classic (Morning/Afternoon)**
15 Hours per week
- **Semi-Intensive (Morning/Afternoon)**
20 Hours per week
- **One-to-One**



Extracurricular activities

- Monthly course tutorials
- Monthly skills test
- Weekly unit test
- Masterclass programme
- Conversation clubs
- Study Clinics



Electives list sample

English Path offers a variety of elective courses that allow students to explore their interests and develop their skills. These courses are taught by experienced and qualified teachers, and they are a great way to supplement your general English studies. Electives depending on your level of English, the EP campus and current availability:

- Everyday French
- Listening
- Reading
- Writing
- Pronunciation
- Speaking
- Grammar
- Vocabulary
- Everyday English
- Business English
- Personal Branding
- IELTS Preparation
- TOEIC Preparation



School material

Books: French - Inspire (Hachette), English - English File 4th Edition (Oxford) + digital pack

Additional material used: audio, digital presentation material, authentic materials.

Class outings: The students will often have lessons 'outside' which allows them to use their new language skills in action.



Students

Average number of students per class: 15

Minimum age of students: 16

Average age of students*: 27 years old

Nationality mix*: Students from all over the world

*As per 2023 stats. Nationality mix and age varies.

End of course certificate: You will receive a course certificate at the end of your course.

@englishpathschools



Teaching methodology

At English Path we use the communicative approach which means:

- A focus on speaking
- Interactive lessons
- Noticing students' gaps and reacting to them
- Going beyond the textbook
- French for real life outside the classroom
- Understanding each student's individual needs

All EP teachers are trained in this approach from their first day, so students have the same experience in all levels at all EP locations.

Take a look at our graduation ceremony





Accommodation



Accommodation is a vital part of your experience in a new country. Your new home is an important part of your study experience. Each school has specially chosen options to help make the most out of your stay. Homestay and student residences offer different accommodation experiences, but always meet the highest standards.

All accommodation options are based on availability. Please make sure you check with your representative if we have availability.



Which accommodation option should I choose?

The choice of accommodation depends on your preferences, needs, and budget. Below are some important factors you need to consider.

10	12	Homestay	Student residence	Hostel
		<ul style="list-style-type: none">Immerse in local culture & customs.Host assistance for queries.Towels, kitchen utensils, and more provided.	<ul style="list-style-type: none">Convenient location, typically close to campus.Easy access to good facilities and nearby amenities.24h reception.	<ul style="list-style-type: none">Full services (housekeeping, room service)Flexibility (no long-term commitment)Affordable option
		<ul style="list-style-type: none">May not be as social.Host family rules may apply.It can be up to 60 mins travel.	<ul style="list-style-type: none">Noise levels might be high.Might be sharing facilities with other students.Might be expensive.	<ul style="list-style-type: none">Little privacy; Sharing room with othersImpersonal, limited customization

Booking student accommodation in 3 simple steps

Step 1

You can indicate your preferred type of accommodation (homestay, shared apartment or residence) on the application form during your application for a course. Our Student Services team will record the preferred choice of accommodation.

Step 2

EP will be able to secure the accommodation option once the invoice has been paid. Our team will send you the accommodation confirmation with further details on the selected option.

Step 3

You will need to confirm your arrival and send your flight details to our team as soon as the flight is booked and no later than one week before the flight date. Our team will be able to book and confirm your accommodation and/ or transfers and provide more details within the confirmation document.

If you arrive at a residence or homestay between 22.00–08.00 you may be asked to book alternative accommodation in a hotel on the first night due to late/early arrival at the accommodation.

Homestay

Half - board homestay

1 meals per day (dinner)
from Sunday to Thursday.
5 meals per week.

- The average commute is between 15 and 60 minutes by public transportation.
- Live in the home of a local resident.
- Comfortable, safe environment with meals prepared for you.
- Opportunity to practise English with your host.

Things students need to bring

Toiletries, personal items to make student's room feel at home, prescription medication, SIM card, a small gift for the host family (not required).

Meals provided

Yes (depends on booking type, please refer to the table at the top of the page).

Breakfast: Breakfast is usually a light meal consisting of cereal, fruit, toast, juice, or coffee. Hosts will usually ask you to prepare your own breakfast.

Lunch: Your host family will prepare a packed lunch for you, which usually consists of a sandwich, fruit or sweets and a drink.

Otherwise: You will be responsible for buying your own lunch at school, from a local restaurant, or the local shops.

Dinner: You will usually eat dinner with your host, or occasionally you may prepare your own meal with food supplied by your host.

Additional Information

Homestays are a 15 - 60 minute commute to the school.



Services included

Bed linen, towels, telephone use for emergencies, students need to make sure to discuss laundry with their host family after you arrive as laundry facilities will depend on your individual homestay.

Extra cost of services: No.

Will the Homestay arrange to pick up the student from the airport?

No. However you can book your airport transfer with your EP school. The transfer to your accommodation will then be organised accordingly.

Transport to school

Your host will help you to find your way to and from school on your first day and will show you how to use public transport.

Where are the host families located?

Paris

Student Residence

(Aparthotel Adagio Paris XV)

Finding ways to unwind during your stay in Paris is key, and whether it's sipping a rich espresso, enjoying a hearty meal, or indulging in a little shopping, Adagio Paris XV puts it all within easy reach. With its comfortable apartments and great location, it's the perfect base to relax, recharge, and enjoy everything the city has to offer.

- Spacious, fully equipped and furnished apartments
- Laundry facility on site
- Free Wi-Fi
- Safe locker to store precious items
- Microwave/ basic kitchen
- Private bathroom
- Shared open area near reception

 **Address:** 20 Rue d'Oradour Sur Glane, Saint-Lambert, Issy-les-Moulineau

About the residence

Accommodation types:
Studio apartments

Bedrooms: The bedroom contains the following: bed, pillow, bedding, chair, desk, window, closet.

Bed size: Often convertible into double bed or single bed.

Bathroom: Private bathroom.

Kitchen: The studio kitchen contains the following: fridge, stove, cutlery, plates, pans, microwave, sometimes dishwasher.

Facilities: Spacious lobby, study room and laundry room onsite, WI-FI.

Cleaning service: Light cleaning service once a week in the common area. Students are responsible for keeping their room clean. Change of bedding is included but at additional cost. It is also students' responsibility to maintain cleanliness in the kitchen by washing their dishes, pans and cutlery after cooking.

Linens/towels: Fresh clean linens and bedding provided at check-in. Students responsible for cleaning after check-in. Towels are also provided.

Neighbourhood: Nice neighbourhood, lots of restaurants close by. Close to lots of parks and Parc des Expositions (lots of events there).

Visitors/guests: Visitors are only allowed in the common areas & must leave by 9pm. No overnight visitors. Penalty fine for visitors in unit after 9 or overnight.

Noise: Residents are required to respect all other residents and maintain a level of noise that does not disturb others. Quiet hours are 10 pm - 8 am.

Smoking: All facilities and residents' rooms are non-smoking.

Reception/security:
24h reception – they are there in case of problem or questions

Minimum weeks requests:
4 weeks minimum stay. Booking from Saturday to Saturday.

Check-in/check-out: Check in from 3 pm / Check out by 11 am. If students arrive before 3 pm or leave after 11 am, they will be charged



Student Residence

(Aparthotel Adagio Access Vanves
Porte De Versailles)

The Adagio Access Vanves Porte de Versailles aparthotel benefits from a prime location near the Parc des Expositions and Palais des Sports. The aparthotel also benefits from very good public transport links less than 10 minutes away, allowing you to travel easily into Paris in a short amount of time. The studios are completely furnished and fitted with a fully equipped kitchen. You benefit from access to a heated indoor swimming pool and private car park.

- Private studio apartments
- Spacious, fully equipped and furnished apartments
- Laundry facility on site
- Private kitchen
- Wi-Fi
- Weekly cleaning included. Extra cleaning service available at a fee.

 **Address:** 26 rue Jean Bleuzen 92170 Vanves

About the residence

Accommodation types:
Studio apartments

Bedrooms: The studio contains the following: bed, pillow, bedding, chair, desk, window, wardrobe, bedside tables with lamps, flat screen TV, sofa, dining table with chairs.

Bed size: Often convertible into double bed or two single beds.

Bathroom: Ensuite bathroom with shower or bathtub, hairdryer, towels and basic toiletries.

Kitchen: The studio kitchen contains the following: fridge, freezer, stove, oven, cutlery, plates, pans, microwave, dishwasher, kettle.

Facilities:- Heated indoor pool, breakfast room, and laundry room onsite, plus Wi-Fi.

Neighbourhood: Situated on the south side of Paris, Vanves is a very attractive suburb of the city. Many buildings, including the church of St. Remy and the castle of the Princes of Condé, now Lycée Michelet, are witness to its rich past. It has a delightful town square - the Place de la Republique - where the Town Hall is situated. There are thrice-weekly markets where over 50 traders sell

everything from local food specialties of meat, fish, game and cheese through to Italian and Asian products and clothing.

Visitors/guests: Our apartments are for the use of our students only.

Noise: You are required to respect all other residents and maintain a level of noise that does not disturb others. Quiet hours are between 10pm and 8am.

Smoking: All facilities and residents' rooms are non-smoking.

Reception/security desk:
Reception is open 24/7.

Cleaning service: A cleaning service is provided once a week.

Bed linen/towels: Fresh clean linens and bedding provided at check-in. Students are responsible for cleaning after check-in. Towels are provided.

Minimum weeks requests:
4 weeks minimum stay. Booking from Saturday to Saturday or Sunday to Sunday.

Check-in/check-out: Check in between 3pm and 9pm / Check out 11am.



ENJOY Hostel

Enjoy Hostel is a compact, budget-friendly hostel hotel hybrid in Paris's 14th arrondissement, a short 550 m walk from Alésia metro station and within easy reach of Montparnasse station and the Catacombs offers en suite dorms (for 4 or 8 guests) and small private rooms, all air conditioned, with daily housekeeping, free Wi Fi, shared kitchen facilities, common lounge with computers, and 24 hour reception. Guests frequently praise its excellent cleanliness and helpful staff.

- Shared bathroom
- 15 mins walking distance from EP Paris
- Laundry facility on site
- 24/7 reception staff
- Free Wi-Fi
- Shared rooms- they are single gender unless requested
- Restaurants nearby

 **5 Rue des Plantes 75014 Paris France**

About the residence

Accommodation types:
Triple sharing dorms with shared bathroom.

Bedrooms: The bedroom contains the following: bed, pillow, bedding, towels, closet.

Bed size: Single bed.

Bathroom: Shared bathroom.

Facilities: Computer room, Laundry room onsite, WIFI and luggage storage room.

Neighbourhood: The Enjoy Hostel is located in Paris's 14th arrondissement, a relaxed, residential area known for its local bakeries, cafés, and close-knit Parisian charm. It's also home to the Montparnasse district and the Catacombs of Paris, offering both cultural depth and convenient metro access. And is only 15 mins walk from school.

Visitors/guests: Not allowed

Noise: Residents are required to respect all other residents and maintain a level of noise that does not disturb others. As this is a shared hostel, it can be noisy.



Smoking: All facilities and residents' rooms are non-smoking.

Reception/security desk:
Reception open 24/7, security on site during nights.

Cleaning service: A cleaning service is provided once a week.

Bed linen/towels: Fresh clean linens and bedding provided at check-in.

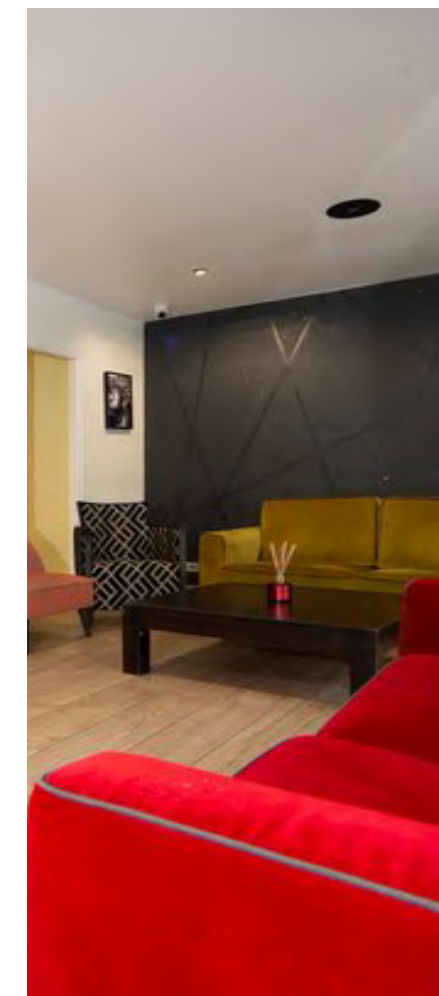
Minimum weeks requests:
1 day minimum stay.

Check-in/check-out: Check in after 2:30 pm / Check out before 9:30 am .



Location of the accommodation:
15 mins walk from EP Paris.

Additional charges: Visitor tax= €2.60 per night for 18+ paid onsite (not included in invoice)



FIAP accommodation

FIAP Paris is a modern youth accommodation and cultural center located in the 14th arrondissement, offering a blend of hostel atmosphere and hotel comfort. It features 192 ensuite rooms accommodating 1 to 7 guests, with private bathrooms, and provides amenities such as free breakfast, 24-hour reception,= and on-site dining options. The facility is well-suited for solo travelers, groups, and students, and is conveniently situated near metro stations for easy access to Paris landmarks

- Buffet Breakfast and dinner included
- 25 mins walking distance from EP Paris
- Spacious, fully equipped and furnished ensuite rooms
- Free Wi-Fi
- Laundry facility on site
- 24/7 reception staff
- Restaurants on site

Address: FIAP Jean Monnet 30 Rue Cabanis
75014 Paris, France

About the residence

Accommodation types:

- Twin: 1 shower and 1 toilet
- Triple premium: 2 showers and 1 toilet
- Single room has private bathroom, tv, mini fridge, kettle

*they have premium room options as well that includes tv, welcome kit, mini fridge and coffee/tea.

Bedrooms: The bedroom contains the following: bed, pillow, bedding, towels, closet, hairdryer, kettle.

Bed size: Single bed.

Bathroom: Ensuite bathroom with shower or bathtub, hairdryer, towels and basic toiletries.

Facilities: Spacious lobby, study room and laundry room onsite, WIFI and restaurant included.

Neighbourhood: It is conveniently located in the 14th arrondissement, near the Glacière metro station (Line 6) and Denfert-Rochereau station (RER B), providing easy access to central Paris and both Charles de Gaulle and Orly airport and 10 minutes from Eiffel Tower. through to Italian and Asian products and clothing.

Visitors/guests: To inform the reception first.

Noise: Residents are required to respect all other residents and maintain a level of noise that does not disturb others.

Smoking: All facilities and residents' rooms are non-smoking.

Reception/security desk: Reception open 24/7, security on site during nights.

Cleaning service: Free, every three days.

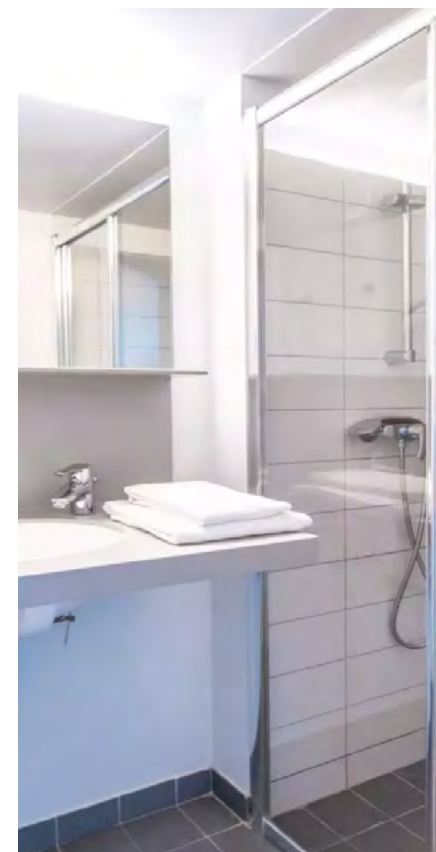
Bed linen/towels: Fresh clean linens and bedding provided at check-in.

Minimum weeks requests: 1 day minimum stay.

Check-in/check-out: Check in after 2:30 pm / Check out before 9:30 am.

Location of the accommodation: 25 mins walk from EP Paris, 20 mins tube away.

Additional charges: Laundry room onsite: wash €4 and dry €2.5
Packed lunch for= €14.5
Visitor tax= €2.60 per night for 18+ paid onsite (not included in invoice)



Social programme

Paris, the City of Light, is an enchanting metropolis that effortlessly marries history, culture, and romance. From the iconic silhouette of the Eiffel Tower to the charming cobblestone streets of Montmartre, every corner reveals a story waiting to be discovered. The city's museums, such as the Louvre and Musée d'Orsay, showcase some of the world's most treasured art collections, while its culinary scene tantalizes the taste buds with exquisite French cuisine. Paris exudes an undeniable attraction, drawing millions of visitors each year to wander along the Seine, sip coffee at sidewalk cafes, and immerse themselves in its timeless elegance.

Examples of social activities

- Emily in Paris tour
- Buttes Chaumont tour
- Canal Saint Martin apero
- Montmartre tour
- Apero by the Seine
- Mini golf
- Catacombes tour
- Midnight in Paris tour
- Pere lachaise
- Versailles daytrip

Check our live social programme here



Example timetable

Mon	Tues	Wed	Thurs	Fri	Sat
Park visit (eg. Buttes Chaumont, tuileries)	Eiffel tower	Games afternoon (pool/ping pong)	Carnavalet museum	Coffee in a cafe	Versailles day trip
Musée d'Orsay	City walking tour	Apero by the Seine	Montmartre tour	Mini golf	Giverny (Claude Monet's house and gardens)
					Reims (champagne tour)

VERSAILLES

GIVERNY

Examples of nearby cities to visit



Recommendations

Checklist & other useful information

Here are a few important items that you should bring with you:

- Passport
- Acceptance letter
- Accommodation letter
- Proof of health/medical insurance
- A bit of cash and credit/debit cards/Apple or Google Pay
- Weather-appropriate clothing (depending on the season you come to Paris)
- Adaptor for electrical appliances
- Prescription medication and medical records
- Emergency information

Before you leave your country

Here are some important things you need to know to make your arrival as smooth as possible: use our checklist to ensure you don't forget anything and are prepared for the exciting times ahead.

Pocket money

Recommend weekly budget: 250€. This should cover expenses, laundry, local travel and activities. You will need additional money if you want to take weekend trips. Bring 100€ with you in cash and a debit or credit card. You will need to check with your financial institution to make sure you will be able to withdraw money from a French ATM. Do not bring foreign currency. It is not wise to carry around large amounts of cash.

Clothing

Most students dress casually for classes, but you should bring nice clothes for going out and sportswear for sports and outdoor activities. The climate is changeable and maybe different from your own. The typical temperature is 20-35°C in the summer and 0-10°C in the winter, although it can drop below freezing. Bring waterproof clothing if you're arriving in the autumn or winter.

Electrical current

Standard voltage in France is 220 volts; remember to bring an adaptor with you or buy one when you arrive.

School notifications

We encourage you to follow the school's Instagram account before you arrive and especially during your stay. This will give you an idea of what is happening at the school and help you connect with staff and students. This is also where we will post notification of any unexpected school closures: it is important you check our Instagram account for any messages while you are attending the school, especially if there is severe weather in the area (e.g. snowstorm, flood, etc.). If the school cannot open or school opening will be delayed, we will post a message as soon as possible (the night before or in the morning) to advise you of this, along with information on how to get further updates and any alternate scheduling (if applicable). Follow EP! [@englishpathschools](#)

When you arrive in Paris

Arriving at the airport in a foreign country can be overwhelming. To better prepare yourself, make sure that you have read the information below about your arrival and how to get to your accommodation. If you get lost or confused upon arrival, don't be afraid to ask the airport staff for help as they will be happy to give assistance.

EP transfers

Students should arrive at Roissy Charles de Gaulle / Orly Airport. We request that you book your flights according to the starting date of your specific programme. You must arrive on the Saturday or Sunday prior to your course start date. If you have booked a transfer service, a driver will meet you outside the customs area and drive you to your homestay or residence. Please ensure you arrange and pay the transfer fee in advance.

Transfer service emergency contact details

If you have any flight changes, miss a connecting flight or need help meeting the transfer service, you should call one of the following emergency numbers. Please be prepared to tell them your name, school name (English Path) and location. Students should only accept a transfer from a greeter with the official English Path signage.

Independent transfers

- RER to Paris Cost: 13€, Journey time: 30 minutes
- TAXI SERVICE Cost: 110€ (tips are not mandatory!), Journey time: 45 minutes depending on location of homestay/residence

Staying safe at school

If you or another student has an accident or needs urgent medical attention, please come to reception where the First Aider is located.
Fire safety: If you discover a fire, press the fire alarm button on the nearest alarm. Leave the building immediately via the fire exit. Make sure you tell a member of EP staff exactly what happened so they can call **18**. If you hear the fire alarm, leave the building immediately. Do not run, use the lift or stop to collect your belongings. EP staff will guide you to the fire exit. Go to the assembly point. Follow any instructions given by a member of EP staff and do not go back into the building until you are told to do so by EP staff.

Personal safety and looking after valuables

Paris is generally a safe place but as with a lot of big cities, you should always be alert. Some tips are: Be alert when you are walking alone at night. Avoid carrying large amounts of cash. Do not leave your belongings unattended. In France, you do not need to always carry your identification card or passport with you, you can keep it at home and carry a picture of your ID on your phone or a photocopy in your bag.



Emergency services

- Call 18 in case of fire.
- Call 17 if you need the police.
- Call 15 in case of a medical emergency.



Medical costs

Medical costs are at the discretion of your local doctor or hospital. Minimum medical costs are as follows:

- Consultation with a doctor: 25-90€
- Prescriptions at a chemist: 5-70€
- Dental treatment: 80€
- Eye test or new glasses: 90-300€



Laws

- No one under the age of 18 in France may buy or consume tobacco or alcohol, including beer and wine. It is against the law to buy tobacco or alcohol for someone you know who is under the age of 18.
- Driving under the influence of alcohol is a very serious crime and police make regular random checks.
- You will need international ID to enter bars, clubs or pubs (e.g. Passport, ID card, driving license).
- Buying, selling and using drugs is illegal.



Student code of conduct

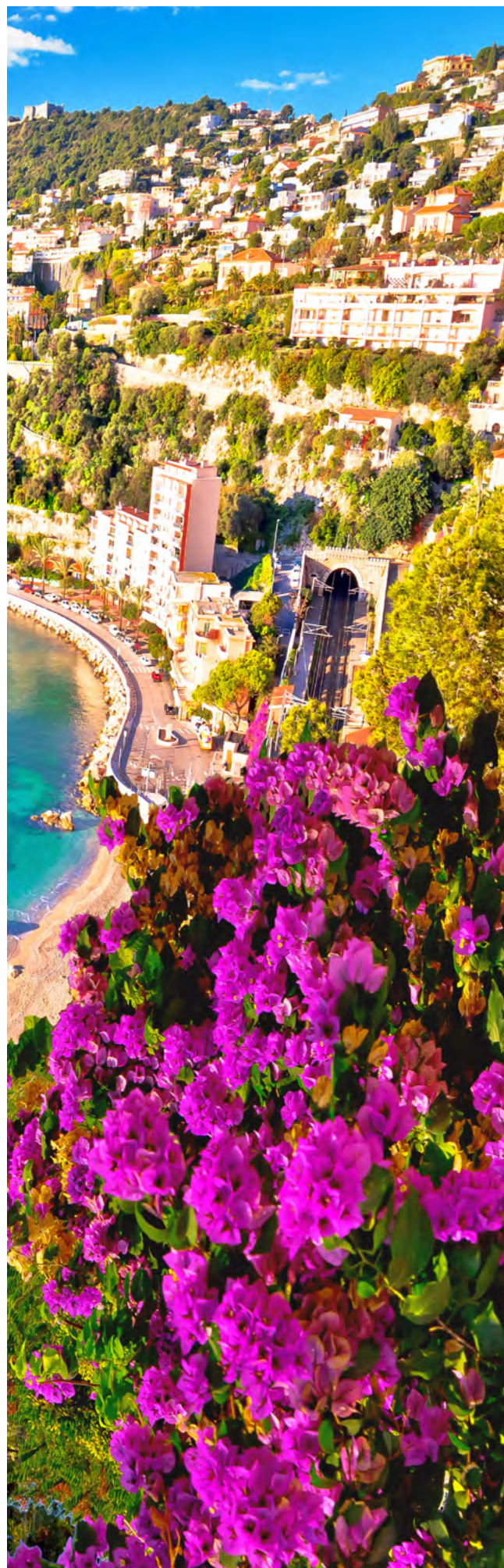
- You must attend all classes. If you do not attend your classes your representative will be informed. If you do not then improve your attendance you will be sent home. 85% attendance is needed to be able to receive a certificate of completion.
- Be on time for all your lessons.
- Always inform English Path if you are going to be absent from school for any reason and tell your host family if you are going away overnight.
- If you commit a criminal offence or have to be severely disciplined you will be sent home. We will also inform the immigration authorities.
- Be respectful, polite and open to different cultures.



Living costs

(sample prices for items in this city)

- Bottle of water: 0,70€
- Coffee: 2,70€
- Can of coke: 2€
- Meal out for two: 40€
- Takeaway pizza: 18€
- Sandwich: 5€
- Local bus ticket: 2€
- Local subway ticket: 2.50€
- Bike rental: 20 to 40€/month
- Cinema ticket: 13.50€



Paris airport transport

Paris International Airport

Closest airport: Roissy Charles de Gaulle / Orly

Mode	Line or number	Cost	Duration (to the centre)
Orly Airport to city centre by metro:	Line 14	13,00 €	30 minutes
Roissy Airport to city centre by train:	RER B	13,00 €	30 minutes

- If you choose to book an airport transfer, please send us your flight details at least 4 weeks in advance to ensure we can arrange the service for you.
- A driver will meet you after you come through the customs area and drive you to your accommodation.



@englishpathschools



englishpath.com



