

Accommodation

Choosing the right accommodation is a vital part of your experience in a new country. Your new home is one of the most important parts of your stay.

Each school has specially chosen options to help you make the most out of your stay.

Homestay and student residences do offer different accommodation experiences, but always try to meet the highest standards.

*Please make sure you check with your representative, as all accommodation options are based on availability.

What accommodation option should I choose?

The choice of accommodation depends on your preferences, needs, and budget. Below are some important factors you need to consider.

Homestay

- Immerse yourself in local culture & customs.
- Host assistance for questions.
- Towels, kitchen utensils, and more are provided.
- Budget-friendly.

- May not be as social.
- Host rules may apply.
- It could be up to 75 mins travel.

Shared apartments

- Meet other students from all over the world.
- Easier to socialise.
- Can be more affordable.

- May have to deal with shared chores and responsibilities.
- You might not be able to choose your flatmates.

Hostel

- Full services (housekeeping, room service)
- Flexibility (no long-term commitment)
- Affordable option

- Little privacy; Sharing room with others
- Impersonal, limited customization
- Might be expensive.

Student residence

- Easy access to good facilities and nearby amenities.
- 24hr assistance.

- Noise levels might be high.
- Might be sharing facilities with other students.
- Might be expensive.

Booking student accommodation in 3 simple steps

Step 1

You can indicate your preferred type of accommodation (homestay, shared apartment or residence) on the application form during your application for a course.

Our Student Services team will make a record the preferred choice of accommodation.

Step 2

EP will only be able to secure the accommodation option once the invoice has been paid.

Our team will send you the accommodation confirmation with further details regarding the selected option.

Step 3

You will need to confirm your arrival and send your flight details to our team, as soon as the flight is booked and no later than one week before the flight date. Our team will then be able to book and confirm your accommodation and/ or transfers and provide more details within the confirmation document.

If you arrive at a residence or homestay between 22.00–08.00 you may be asked to book alternative accommodation in a hotel on the first night due to late/early arrival at the accommodation.

Homestay

Full - board homestay

3 meals per day (breakfast, packed lunch, dinner) from Monday to Sunday. 21 meals per week.

Half - board homestay

2 meals per day (breakfast, dinner) from Monday to Sunday. 14 meals per week.

- The average commute is between 15 and 60 minutes by public transportation.
- Live in the home of a local resident.
- Comfortable, safe environment with meals prepared for you.
- Opportunity to practice English with your host.



Things students need to bring

Toiletries, personal items to make student's room feel at home, prescription medication, SIM card, a small gift for the host family (not required).



Meals provided

Yes (depends on booking type, please refer to the table at the top of the page).

Breakfast: Breakfast is usually a light meal consisting of cereal, fruit, toast, juice, or coffee. Hosts will usually ask you to prepare your own breakfast.

Lunch: If full-board: Your host family will prepare a packed lunch for you, which usually consists of a sandwich, fruit or sweets and a drink.

Otherwise: You will be responsible for buying your own lunch at school, from a local restaurant, or the local shops.

Dinner: You will usually eat dinner with your host, or occasionally you may prepare your own meal with food supplied by your host.



Services included

Bed linen, towels, telephone use for emergencies, students need to make sure to discuss laundry with their host family after you arrive as laundry facilities will depend on your individual homestay.

Extra cost of services: No.



Will the homestay arrange to pick up the student from the airport?

No. However you can book your airport transfer with your EP school. The transfer to your accommodation will then be organised accordingly.



Transport to school

Your host will help you to find your way to and from school on your first day and will show you how to use public transport.



Where are the host families located?

South Dublin.

Additional information

Homestays are a 15 - 60 minute commute to the school.

Houseshare

In shared houses with other international students and young professionals, you will find not only a place to rest but a place to thrive. Located in the city centre, they combine the comfort of home with the convenience of close proximity to educational institutions, restaurants, pubs, and transport links.

- City centre location
- Average commute is approx 50 minutes
- Private bedrooms or shared bedrooms
- On-site laundry facilities
- Wi-Fi available

Travel time to school: up to 60 minutes by public transport.



About the residence

Accommodation types:

Single room, twin room, triple room.

Bedrooms: Each bedroom contains 1-3 beds, pillows, bedding and bed linen, a window, a wardrobe, and a desk.

Gender policy: In shared rooms, we do not mix genders, except for couples/friends booking a double room together.

Things you need to bring: Shared houses are self-catered. You will need to buy your own food, toiletries, and small household items such as toilet paper and washing-up liquid. You will also need to bring your own towels.

Kitchen: Guests have access to self-catering amenities, including fridge, freezer, microwave, air fryer, oven, kettle, toaster, cutlery and crockery, cooking utensils, cupboard space.

Facilities: Lounge areas, Laundry facilities.

House Rules:

No smoking.
No parties.
Respect and harmony in the house.
Follow the cleaning calendar provided.
Clean up after yourself in common areas.

Neighbourhood:

Dublin's Phibsborough area offers a variety of amenities, dining options, and recreational activities. Local highlights include:

Street Basin - A tranquil park.

Wood Fire Cafe - An Italian pizza restaurant.

Lovinspoon - A popular spot for breakfast and brunch.

Numerous galleries and museums
The area is well-served by public transport, providing easy access to other parts of Dublin.

Liability & Security: English Path or Book Your Stay IE are not liable for the loss, damage, or theft of personal belongings. Guests are encouraged to have personal insurance.

Visitors/guests: Visitors are allowed only until 10pm (no overnight guests).

Noise: Residents must respect others and maintain a noise level that does not disturb others.
Quiet hours: 10pm to 8am.

Smoking: No smoking is allowed anywhere in the residence.

Reception/Security: With CCTV and secure entry systems, your safety is our priority.

Cleaning service: Rooms are cleaned before check-in. However, students are responsible for cleaning their own rooms and kitchen/living spaces.

Bedding/towels: Bedding and bed linen are provided on check-in. Students are responsible for washing their own linen. Students must bring their own towels.

Minimum weeks requestes:

Minimum stay: 8 weeks / maximum stay: 24 weeks.

Check-in/check-out: Check-in from 3pm / check-out 11am.

Accommodation location: 2 minutes walk from public transportation in Dún Laoghaire.

Booking requirements: Age range: 20 - 35 years old

Dublin Royal Marine

Hotel rooms

Stay at a historic and prestigious hotel overlooking Dublin Bay with views of the city, Howth, and more. The hotel is conveniently located in the heart of Dún Laoghaire, close to the train station, major shops such as Dunnes Stores, Tesco, and Penneys, and is situated near many restaurants, pubs, and cafés.

- Private bedrooms
- Fully wheelchair accessible
- Laundry services on site
- Five restaurants/bars/lounges on site
- Wi-Fi
- Smart TV included
- Cleaning is included

 **Address:** Marine Road, Dún Laoghaire, Dublin, A96 K063



About the residence

Accommodation types:

Private bedroom with en suite bathroom. (Please consult us for up to date pricing).

Bedrooms: The bedroom contains the following: bed, pillow, bedding, chair, desk, window, closet, kettle, safe, mini fridge, iron and ironing board, hairdryer, and air conditioning.

Bed size: Double bed.

Bathroom: En suite with shower or bath.

Kitchen: The room is equipped with a kettle and tea/coffee making facilities as well as a mini fridge.

Facilities: Spacious lobby, lounge to relax and study in, onsite free wifi, laundry services, gym, and pool.

Extra costs facilities: Breakfast is optional and is served from 7-10.30 during the week and 8-11 at the weekend. Spa services cost depending on the service purchased.

Neighbourhood: 2min away walking distance from Dún Laoghaire train station, 1 minute from George's Street, Dún Laoghaire's main street.

Visitors/guests: Visitors, including overnight guests, are not allowed.

Noise: Residents are required to respect all other residents and maintain a level of noise that does not disturb others. Quiet hours are 10 pm-8am.

Smoking: All facilities and resident's room are non-smoking.

Reception/security desk: 24 hour reception.

Cleaning service: Rooms cleaned daily unless otherwise requested.

Bedding/towels: Fresh clean linens and bedding provided daily, towels provided and changed daily

Minimum weeks requests: 1 night minimum stay.

Check-in/check-out: Check in from 4pm / Check out 12pm.

Accommodation location: 2 minutes walk from public transportation in Dún Laoghaire.



Koula Rooms

Koula Rooms is dedicated to providing international students with not just a place to rest but a place to thrive. Located on scenic Abbey Road, Monkstown in County Dublin, Koula Rooms combines the comfort of home with the convenience of proximity to educational institutions and transport links.

- Private bedrooms
- Laundry services on site
- Restaurants, bars, and lounges nearby
- Wi-Fi available
- Smart TV included

Address: Apartment 10, Block 2, Ballintle Court, Abbey Road, Kill of the Grange, Monkstown, Co. Dublin

Availability: 30 May 2025 - 21 August 2025

Travel time to school: 28 minutes by public transport

About the residence

Accommodation types:

Single room ensuite.
Twin room ensuite.

Bedrooms: Each bedroom contains: 1-2 beds, pillows, bedding, and bed linen, window, wardrobe, desk, private bathroom.

Gender policy: In shared rooms, we do not mix genders, except for couples/friends booking a double room together.

Things you need to bring: This residence is self-catered. You will need to buy your own food, toiletries, and small household items such as toilet paper and washing-up liquid. You will also need to bring your own towels.

Kitchen: Guests have access to self-catering amenities, including fridge, freezer, microwave, oven, kettle, toaster, cutlery and crockery, cooking utensils, cupboard space.

Facilities: Lounge areas, laundry facilities

Bedding/towels: Fresh clean linens and bedding provided daily, towels provided and changed daily

Minimum weeks requests:

Minimum stay: 4 weeks / maximum stay: 12 weeks

Extra costs facilities: Laundry services are available for 5 euros per wash and 2 euros per dry. Monkstown, near Dun Laoghaire, offers a variety of amenities, restaurants, bars, and schools. Transport options include the DART, buses, M50, and N11. The area also provides leisure activities such as golf, swimming, sailing, and coastal walks.

Neighbourhood: 2min away walking distance from Dún Laoghaire train station, 1 minute from George's Street, Dún Laoghaire's main street.

Visitors/guests: Visitors are allowed only until 10pm (no overnight guests).

Noise: Residents must respect others and maintain a noise level that does not disturb others. Quiet hours: 10pm to 8am.

Smoking: No smoking is allowed anywhere in the residence.

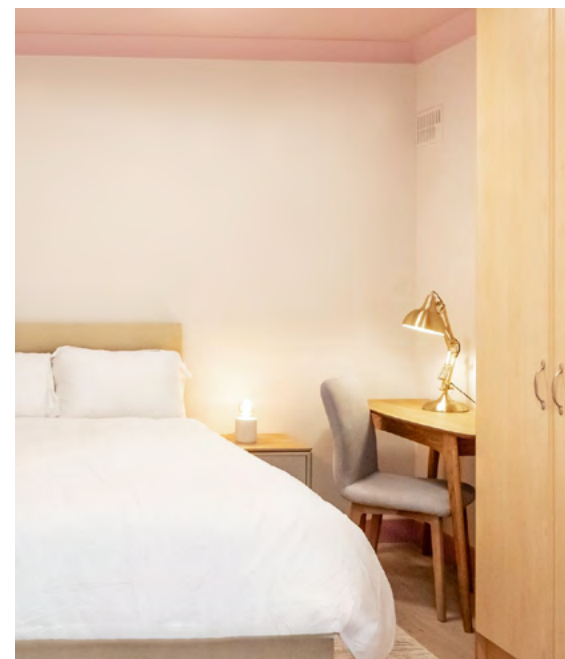
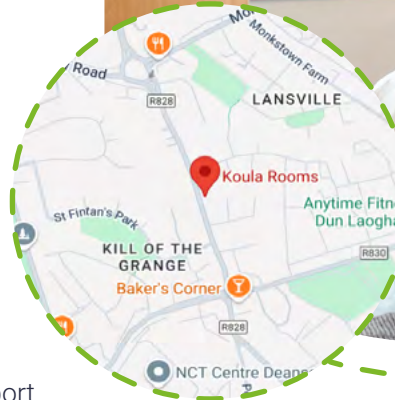
Reception/security desk: With CCTV and secure entry systems, your safety is our priority.

Cleaning service: Rooms are cleaned before check-in. However, students are responsible for cleaning their own rooms and kitchen/living spaces.

Check-in/check-out: Check in from 4pm / Check out 12pm.

Accommodation location: A short bus ride to Dun Laoghaire town and DART station, offering convenient access to a wide range of destinations.

Liability & security: English Path or Book Your Stay IE are not liable for the loss, damage, or theft of personal belongings. Guests are encouraged to have personal insurance.



Niche Living

Serviced studio apartments

Discover modern comfort in the heart of Dun Laoghaire at Niche Living Apartments. Each stylish studio features contemporary furnishings, fully-equipped kitchens, and high-speed Wi-Fi. Enjoy stunning sea views, vibrant local culture, and easy access to Dublin city centre. Experience the perfect blend of luxury and convenience at Niche Living.

- Studio ensuite apartments
- Spacious, fully equipped and furnished apartments
- Laundry facility on site
- Onsite 24/7 Gym & Fitness Club
- Private kitchen
- Wi-Fi
- Fortnightly cleaning included.

Address: Niche Living, Eblana Ave, Dún Laoghaire, Dublin, A96 W8XT. Malakoff

About the residence

Accommodation types:
Private studio apartments

Bedrooms: The studio contains the following: double bed, pillow, bedding, chair, desk, window, wardrobe, bedside tables with lamps, smart TV, table with chair.

Bed size: Double bed.

Bathroom: Ensuite bathroom with shower or bathtub, hairdryer, towels and basic toiletries.

Kitchen: The studio kitchenette contains the following: fridge, freezer, stove, oven, cutlery, plates, pans, microwave, kettle.

Facilities: Gym & fitness club, breakfast room and laundry room onsite, co-working spaces, parcel lockers, bike storage and WIFI.

Extra costs facilities: Breakfast is optional and is served from 7-10.30 during the week and 8-11 at the weekend. Spa services cost depending on the service purchased.

Neighbourhood: Eblana Avenue in Dun Laoghaire features stunning harbour views, lush parks, and a vibrant cultural scene. Enjoy boutique shops, diverse dining, and easy access to Dublin city via the DART line. A perfect blend of seaside tranquility and urban convenience.

Visitors/guests: Visitors are welcome however overnight visitors must register with reception..

Noise: You are required to respect all other residents and maintain a level of noise that does not disturb others. Quiet hours are between 10pm and 8am.

Smoking: All facilities and residents' rooms are non-smoking.

Reception/security desk: 24 hour reception.

Accommodation location: 10 min walk to our school.

Cleaning service: Light cleaning service fortnightly. It is also the students' responsibility to maintain cleanliness in the kitchen by washing their dishes, pans and silverware after cooking.

Bedding/towels: Fresh clean linens and bedding provided daily, towels provided and changed daily

Minimum weeks requests: 2 weeks minimum stay. Booking from Saturday to Saturday or Sunday to Sunday.

Check-in/check-out: Check in between 3pm and 9pm / Check out 11am.

