



Young
Learners

2026

Malta

Student Handbook



Contents

Vision, Purpose, Mission and Values	1
Mental Health and Wellbeing	2
About City	3
About School	5
Safety, Welfare and Safeguarding	7
Holidays	10
First Day at School	11
About your Course	13
How to Practice	15
Placement Test	17
Timetable	18
Accommodation	19
Recommendations	21
Location and Travel	23
Living Cost	24
Staying Safe and Respectful	25
Expectations	27
Code of Conduct	29
Life in City	31
Leisure and Supervision	35
Support for Parents	37



We're so excited to have you with us. Whether you're here for a short stay or a longer journey, you're now part of a vibrant, supportive community across amazing cities like London, Dubai, and Malta. Our team is here to help you learn, grow, and make unforgettable memories. If you need anything, just reach out, we're always happy to help.

Enjoy the journey, and welcome to the EP family!

VISION, PURPOSE, MISSION AND VALUES

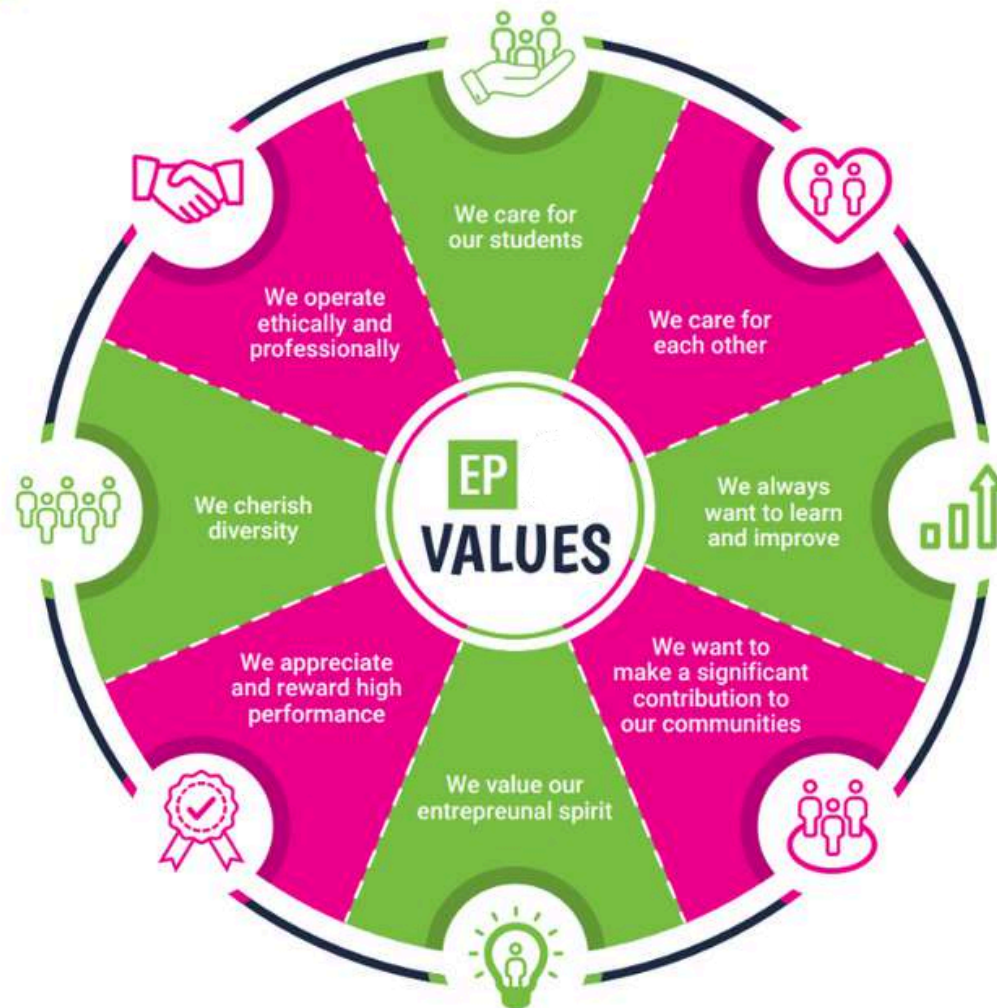
What can you expect from the school?

Vision: To create the world's most accessible and innovative language school that changes lives through education that makes a fundamental difference to living standards.

Purpose: To establish and maintain a singular cross-cultural communication tool in a divided world, bringing people together through a common language. People who can communicate without barriers are more likely to work together for the common good. That is the reason for EP's existence. We believe that everyone has the right to education and language is often the first step.

Mission: A world in which every person can communicate using a common language removing inequality and creating a level playing field. Courses that stimulate and challenge. Students that learn, excel and grow.

Values:



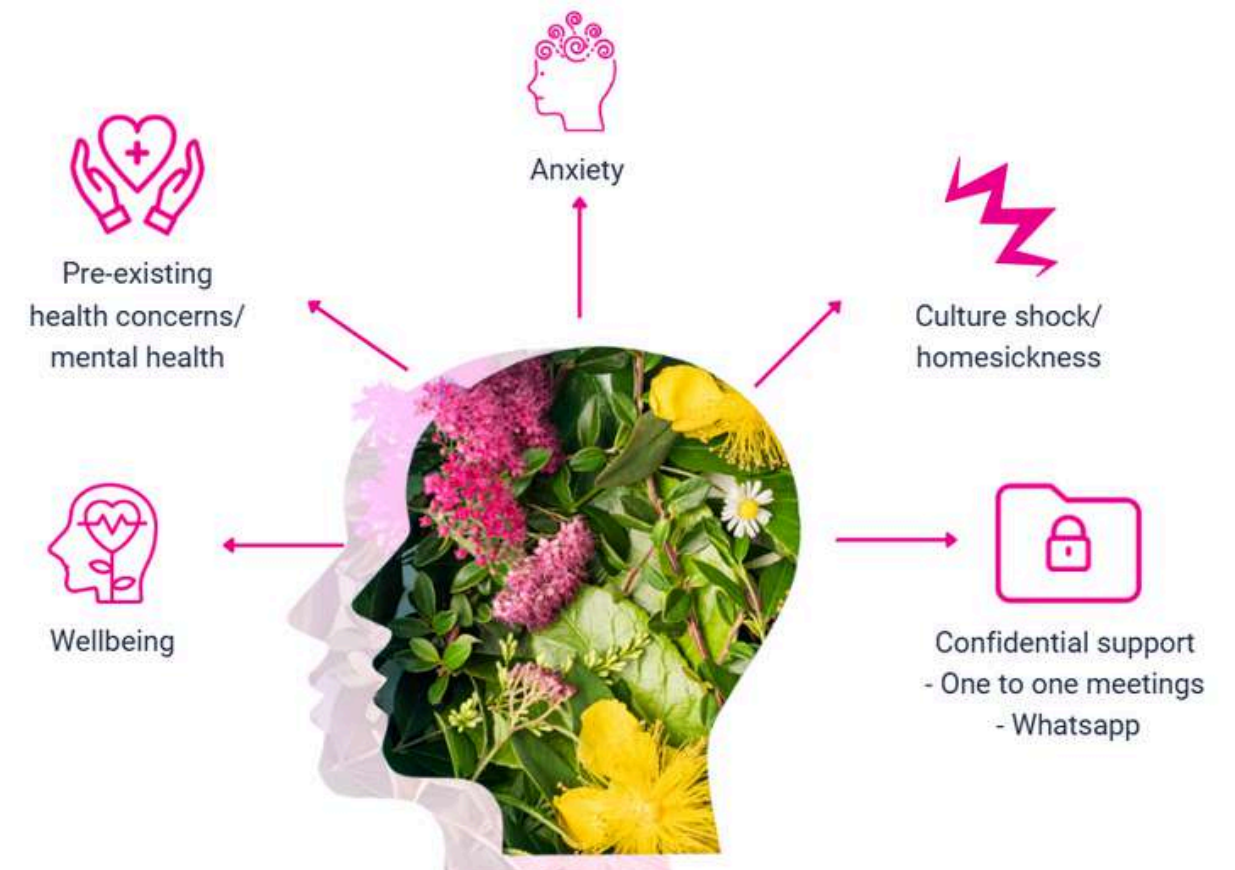
MENTAL HEALTH AND WELLBEING

How can we help?

If you are experiencing mental health difficulties, there are several options for support. You can speak to the YL Coordinator or a member of the EP Staff, we will help you or can recommend an appropriate (professional assistance) service for you.

- Pre-existing health Concerns/ Mental health
- Wellbeing
- Anxiety
- Culture shock/ Homesickness
- Confidential Support in a private room for one to one or via WhatsApp

EP holds your health and wellbeing at heart so should you need help, remember that EP staff is here to support you.



24/7 EMERGENCY PHONE NUMBER: +356 99620779

About Malta

Malta is a popular tourist destination known for its breathtaking seaside location, diverse cuisine, and welcoming atmosphere for tourists. Additionally, with a huge English-speaking population, it is one of the best places to learn English as a second language. Our campus has large classrooms, interactive lessons and group activities. There is also a student study area where you can enjoy some time alone to focus. With free Wi-Fi throughout the campus and access to computers, we will help you learn English in Malta.



Famous landmarks

St. John's Co-Cathedral, Mdina, Valletta, Three Cities, Hagar Qim Temples, Spinola Bay, Popeye Village, Mosta Dome, Blue Lagoon, Gozo

Town personality

St. Julian's, Malta, is a cosmopolitan town known for its vibrant nightlife, seaside charm, diverse cuisine, and welcoming atmosphere. It offers a mix of modern entertainment and traditional Maltese elements, making it a popular destination for both partygoers and those seeking a cultural and seaside experience.

What makes this town unique?

St. Julian's, Malta, is unique for its vibrant nightlife, stunning seaside location, fusion of tradition and modernity, diverse cuisine, and tourist-friendly atmosphere.

Transport within a 1 minute walk

Bus.

Restaurants within a 10 minute walk

Maltese, British, Chinese, European, French, Greek, Indian, Italian, Japanese, Mexican, Seafood, Thai, Vegetarian.

Alternative things to do

Explore museums, visit temples, enjoy the beach and many exciting summer activities (kayaking, windsurfing, beach) and winter activities (hiking, theatre, horse riding).

5 Reasons to choose this city

- 1 One of the most vibrant towns in Malta
- 2 Stunning beaches and water sports
- 3 Varied restaurants and cuisines
- 4 Variety of cultural events (art, music, dance)
- 5 Enjoy year-round outdoor activities



 Staff



Meet the team

Why choose to study in our EP Malta School?


- Centrally located in St Julian's, a seaside town in Malta
- Interesting & varied course offering
- Minutes from bus terminal and a sandy beach
- Social Programme with weekend trips to Valletta, Gozo, Comino, Blue Lagoon & many more
- Surrounded by top universities and institutes, shops and restaurants, medical and dental clinics, a pharmacy as well as a 24-hour convenience store



Find us on Google maps









 EP Malta: West Block, Triq Margaret Mangion, St Julian's STJ 3180, Malta

At this address since: 2022

 Landline: +356 99620779
Emergency: +356 99620779

Close to your EP school

Our centrally located school is walking distance to:

	Cafes and restaurants	1-5 minutes
	Supermarket	1 minutes
	Gym	1 minute
	Bus station	1 minute
	Bank/ATM	2 minute
	Beach	5 minutes
	Balluta Bay	20 minutes
	Sliema	30 minutes

Services & facilities

English Path and GBS Higher Education College, are part of Global Education Group. Together, our students share fantastic and modern university style facilities. At EP Malta we have the following facilities:

Buildings: 1
Floors: 3
Total number of classrooms: 11

School facilities: Student lounge, library & student study area, free Wi-Fi, elevator, modern & spacious classrooms with smart TVs, AC/heating, outdoor terrace, IT Lab, wheelchair accessible.

Other services provided: Social activity programme, airport transfer, medical insurance.

Levels of English offered: All levels.

Reception: The friendly school staff can direct you to the EP offices and classrooms. Your Programme Coordinator, Director of Studies and Student Services Staff will always be present to answer any questions you may have.



Your EP Malta Welfare & Safeguarding Team

Do you have a question?

About your class?

About personal, medical and your accommodation?



Katya Naumova
Director of Studies



Nina Passburg
Safeguarding Officer



Alain Rizzo
YL Coordinator

To speak to a member of staff please call:

 **+356 99620779**

SAFETY, WELFARE AND SAFEGUARDING

First Aid

If you or another student has an accident or requires urgent medical attention, please come to the Main Office. If you are unable to walk, please contact us using the Emergency Phone.

Personal safety and looking after your valuables

Our campuses are safe, but please stay alert, particularly in tourist areas. Here's some advice to help you enjoy a safe and worry-free visit.

- Be alert when you are walking in crowded places.
- Do not walk with your phone in your hand if you are not using it.
- Place your valuables (such as phone and wallet) in inside pockets or in your bag.
- Avoid carrying large amounts of cash unless you know you need to pay for something.
- Do not leave your belongings unattended.

Fire safety

If you discover a fire: Press the fire alarm button on the nearest alarm. Leave the building immediately via the stairs and fire exit. Make sure you tell a member of EP staff exactly what happened so they can call the Fire Services.

If you hear the fire alarm: Leave the building immediately via the stairs and fire exit. Do not run, use the lift or stop to collect your belongings. EP staff will guide you to the fire exit. Go to the assembly point and stay with your class and teacher there.

Follow any instructions given by a member of EP staff and do not go back into the building until you are told to do so by EP staff.

Reporting Concerns or Abuse

If you ever feel unsafe, worried, or uncomfortable, whether because of another student, a staff member, or someone else, you should speak to a member of staff immediately.

You can talk to:

- Your Teacher or Activity Leader
- The Welfare Manager
- The Designated Safeguarding Lead (DSL)
- Our YLs Centre Manager

If you don't feel comfortable talking to someone in person, you can write a note and leave it with a staff member or use our welfare email: younglearners@englishpath.com.

We take all concerns seriously. We also have a whistleblowing policy, this means anyone can report unsafe or inappropriate behaviour, and it will be dealt with confidentially and professionally.

24/7 EMERGENCY PHONE NUMBER: +356 99620779

Holidays

2026

1 Jan 2026

10 Feb 2026

19 Mar 2026

31 Mar 2026

3 Apr 2026

1 May 2026

7 Jun 2026

29 Jun 2026

15 Aug 2026

8 Sep 2026

21 Sep 2026

8 Dec 2026

13 Dec 2026


25 Dec 2026

The school will be closed during the holidays. Please make sure to book your course/accommodation accordingly. Public Holidays are subject to change according to government announcements.

When the school is closed on a Monday, new students start on Tuesday.

Course days that fall on a public holiday are not reimbursed. The dates are observed as holidays in the year.

If you arrive on a week where the Monday is a holiday, your first day of school will be a Tuesday.

 **Need help?
Not satisfied?
Have a problem?**

At EP we believe that communication and an open-door policy is key to efficiently resolving any issue you might have. If you need help, are not satisfied with one of our services or you need advice, please talk to our staff at school. They will be able to help and assist quickly with any concerns you might have.

First day at school

Feature	Tuition Only	Day Camp	Full Experience
Accommodation	✗	✗	✓
Lunch Provided	✗	✓	✓
Airport Pickup	✗ Can be requested	✗ Can be requested	✓
Evening Activities	✗	✗	✓

Here's a detailed breakdown*

Tuition only - Timetable

Icon	Time	Activity
	08:30	Welcome, school tour and induction
	14:00 - 15:00	Lesson 1
	15:00 - 15:10	Break
	15:10 - 16:10	Lesson 2
	16:10 - 16:20	Break
	16:20 - 17:20	Lesson 3
	17:30	Student pick-up (by parents/guardians)

Day camp - Timetable

Icon	Time	Activity
		Welcome, check-in, residence tour and induction
	08:30	Leisure time and meet the team
	12:45	Lunch
	14:00	Lessons start
	18:00	Student pick-up (by parents/guardians)

Example Week for Full Experience Students

28 JUN Activities are subject to change due to weather conditions, availability or any other unforeseen event.

Time	7:00 - 8:30	8:30 - 12:30	12:45 - 13:45	14:00 - 17:45	18:30 - 20:00	20:00 - 21:30	22:00
Sunday	Arrival/Departure day / On Campus Activities						
Monday		Valletta Walking Tour				Welcome Party UNO	
Tuesday		Pretty Beach		Lessons		Bujibba By Night	
Wednesday	Breakfast	Sports/Dance	Lunch	Water sports	Dinner	Karaoke Night	Good Night
Thursday		Melieha		Adventurer ~ Paddle Boarding Discoverer ~ Windsurfing		Feltom Party	
Friday		EP Skills		Lessons		Themed Pool Party	
Saturday	Day out at the beach Ghar Lapsi (optional Kayaking) Msida to Sliema by Night						

Full experience - Timetable

Icon	Time	Activity
		Welcome, check-in, induction
	08:00	Breakfast
	09:00	Leisure time
	13:30	Lunch
	14:00	Lessons start
	18:30 Onwards	Dinner and evening activities
	22:00	Bed time

*Kindly confirm the exact timings and pick-up locations with the local teams.

About your course

Teaching methodology

At EP we use the communicative approach which means:

- A focus on speaking
- Interactive lessons
- Noticing students' gaps and reacting to them
- Going beyond the textbook
- English for real life outside the classroom
- Understanding each student's individual needs

All EP teachers are trained in this approach from their first day, so students have the same experience in all levels at all EP locations.

School material

Books: We use a range of age-appropriate teaching materials designed specifically for young learners.

Additional material used: Audio, Digital Presentation Material, Authentic Materials.

Students

Average Number of students per class: 15

Minimum age of students: Can vary

Average age of students: Can vary

Nationality mix: Can vary

Certificate of Attendance: you will receive a course Certificate of Attendance at the end of your course.

Extracurricular activities

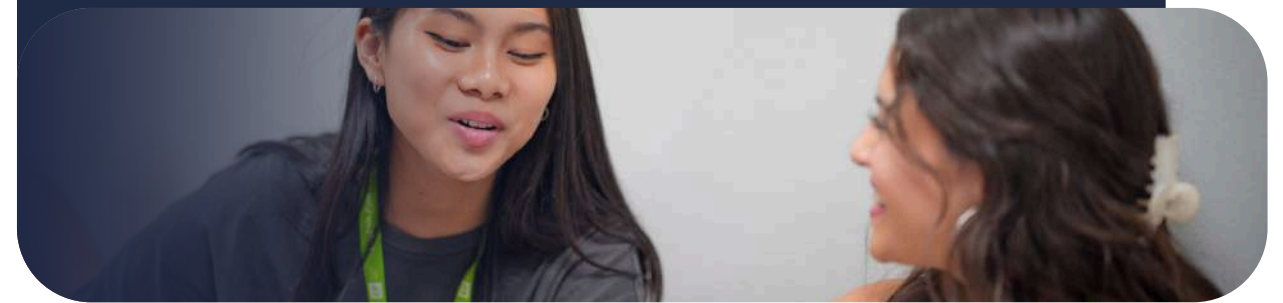
- Placement test to ensure accurate placing in levels
- Varied course materials
- Continuous progress monitoring

Library and Study area

There is a bright study area available for students, offering a great space to support your learning. You'll also find open spaces where you can work with classmates and access the internet.

How to

improve your language skills during or outside of your course



Study skills

Study Skills refer to the ability to frame and improve our learning. For example, what do we do when we learn a new word? Do we make notes? How? It's very important that we are organised in the way we learn, so that we have a much better chance of remembering the language and using it correctly in the future.

We would like to share with you some ways to keep learning and improving your English skills. If you practice these Study Skills, they will help you to continue your English language learning wherever you are.

Listening, Reading and Writing

What to listen to?

Try to listen to as many different types of spoken language as possible to improve your listening.

- Music and songs, TV shows, the news and films
- Speeches and interviews
- Audiobooks

What to write?

Think about the language you've learnt that week and try the following:

- Write an email to a friend/your teacher
- Write a diary/journal entry each day
- Write your shopping list in English

What to read?

There's so much you can read to practice your skills.

- Find an interesting article online?
- Choose a book you've read in your own language and get reading!
- Find an e-book and read on your daily commute to work or studies.

How to

practice vocabulary?



When you record vocabulary, you should also include longer phrases like:

phrasal verbs (e.g. get away with),
multi-word expressions (e.g. How's it going?),
idioms (e.g. raining cats and dogs),
and collocations (e.g. take a chance).

Quizlet 



Download the [Quizlet app](#) – create your own set of flashcards, practice and test yourself!

Cut strips of paper or use index cards. Using your Language Bank, write a word on one side and the translation or definition on the other. Lay the cards on a table and test yourself by placing either all the language sides or all the translations/definitions face down and checking your memory.

Create two cards for each word, one with the word, one with its translation. Spread all the cards on a table and play a game of Snap! Here's how:

- Make two cards for each word and its translation.
- Place all cards face down on a table.
- Turn over two cards at a time.
- If a word and its translation match, you have a Snap!
- Put matched cards aside and continue until all are matched.
- Try timing yourself to complete the game as quickly as possible.



Other useful websites for Learning and Practice

- [bbclearningenglish.com](#)
- [englishclub.com](#)
- [lyricstraining.com](#)
- [ted.com](#)
- [voscreen.com](#)

Exam Practice

- [flo-joe.com](#)
- [cambridge.org](#)
- [ieltspeaking.co.uk](#)
- [ieltsliz.com](#)

Grammar, Pronunciation and Vocabulary

- [bbclearningenglish.com](#)
- [englishclub.com](#)
- [lyricstraining.com](#)
- [ted.com](#)
- [voscreen.com](#)

Extra tip: Using a dictionary

Dictionaries are a useful resource for researching different meanings, collocations, examples of use and standard Pronunciation. Use a mono-lingual dictionary and focus on understanding the meaning rather than translation of individual words. Translating individual words can often lead to misunderstandings.

A great, big paper mono-lingual dictionary is best but Cambridge, for example, have an online advanced learners' dictionary at www.dictionary.cambridge.org, which is easy to use and provides examples of word use.

Placement Test

At EP, we use the CEFR (Common European Framework of Reference for Languages) to place you in the most suitable class for your age & level.

Prior arrival you have to complete a placement test (grammar, writing, and speaking) so we can place you into the right group. You'll be in a class with students who are at a similar level, so you can feel confident and make progress.

<https://forms.gle/DZZqGqZ15GaYaar27>

During the course, your teachers and our academic team will check your progress. You'll also complete a mid-course feedback questionnaire to help us improve your learning experience.

At the end of your programme, you will receive an EP Certificate of Attendance, which includes:

- Your name and course dates
- Your CEFR level
- Your attendance record

Timetable

Your classes will vary throughout the week. Monday to Friday, you will have a 3-hour lesson per day.

During the rest of the week, you will take part in:

- Half day activities

On excursion days, you will be provided with a packed lunch, and you will return to campus in time for dinner. On other days, after your morning activities, you will go to school for lunch and some free time before your 3-hour evening class, which includes two short breaks.

After class, it's dinner time, followed by evening activities. You'll then return to your accommodation before curfew (10:00pm/22:00)

Please remember:

- Students must not leave the premises unaccompanied.
- Curfew times and all school rules must be respected at all times for your safety and that of others.

Take a look at your accommodation

Campus Hub

Finding ways to relax when on campus plays a big part in any student's life, so whether it's a hot cup of coffee, a whopping burger or some well needed retail therapy that chills you out, Campus Hub has it all.

- 24-hour security
- Free high-speed Wi-Fi
- Welcoming community
- Food nearby
- Study rooms & open study area
- Green spaces
- TV lounge



Address:
Ranieri Costaguti, Triq Roberto, L-Imsida MSD 2080, Malta

Your room

Shared 



About the residence

Accommodation Type:

Residence with Triple En-suite Room (three, single beds with a private bathroom inside the room)

Cleaning:

Weekly house-keeping

Laundry:

One wash load per week (fee may apply)

Neighbourhood:

Stay in a welcoming student residence with comfortable rooms, dining, and outdoor spaces, close to public transport and city attractions.

Visitors/guests:

Guests are not allowed.

Noise:

Residents are required to respect all other residents and maintain a level of noise that does not disturb others. Quiet hours are 10pm-8am.

Smoking:

No smoking allowed.

Reception/security desk:

24-hour reception including security personnel.

Minimum stay

The minimum stay is 1-week.

Check In: After 3pm

Check Out: Before 9am

What's nearby

Bus Stop:	91 m away	Malta airport:	8.9 km away
Rock Beach	1.7 km away	Plaza Costaguti:	350 m away
Hospital:	180 m away	Sir Temi Zammit Hall:	350 m away
ATM:	350 m away	Arkadia FoodExpress:	750 m away
Welbee's Supermarket:	37 m away	EP Malta campus:	4.3 km away
Campus Restaurants:	70 m away		



Recommendations

Checklist & other useful information

Here are a few important items that you should bring with you:

- Passport
- Acceptance letter
- Accommodation letter
- Proof of health/medical insurance
- Some cash and credit/debit cards
- Apple or Google Pay
- Weather appropriate clothing
- Adaptor for electrical appliances
- Prescription medication and medical records
- Emergency information
- Airport transfer
- Phone and charger(s)
- Toiletries

Clothing

Most students dress casually for classes, but you should bring nice clothes for going out and sportswear for sports and outdoor activities. The climate is changeable and maybe different from your own. The typical temperature is 25-30°C in the summer and 2 to 6°C in the winter, although it can drop below freezing. Bring waterproof clothing if you're arriving in the autumn or winter.

Electrical current

Standard voltage is 230 volts; remember to bring an adaptor with you or buy one when you arrive.

Arrival at the airport

When you land, connect to the airport Wi-Fi or use your mobile data to check for a welcome message from EP. Once you have collected your luggage and passed through security, look for a member of EP YL's staff wearing an EP YL's T-shirt or lanyard and holding an EP sign. You will be met at a clearly designated meeting point in the arrivals hall, where staff will welcome you and escort you safely to your residence.

When you arrive in Malta

Arriving in a new country can be confusing. Read the information below about your arrival and don't hesitate to ask airport staff for help if needed.

EP YL transfers

If you book an airport transfer, please send your flight details at least 2 weeks in advance. Students should arrive at the airport on the Sunday before their course starts.

For departure, EP YL's staff will escort you to the airport, assist with check-in, and stay with you until your flight leaves. They will also help if there are delays or issues. Students are contacted 40 minutes before departure to ensure everyone boards safely.

Transfer help

If your flight changes or you need transfer help, call the emergency numbers and give your name, school (EP YL's), and location. Only use greeters with official EP YL's signage.

Join the school's WhatsApp group for daily updates and any urgent notices, including school closures or delays.

Pocket money

While we cannot tell you exactly how much money to bring, please remember that all essential costs are already included in your programme: accommodation, meals, lessons, activities, visits and tours. Most students therefore only need money for personal expenses such as snacks, souvenirs, laundry, or any optional activities they choose to do in their free time.

Some students choose to give themselves a weekly budget of around €300, which is usually enough to cover everyday expenses, laundry, local travel and small outings. You will need additional funds if you plan to take weekend trips or purchase higher-cost items.

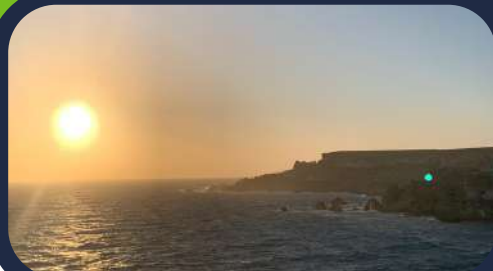
We recommend bringing around €150 in cash for your arrival and using a debit or credit card for the rest of your spending. Please check with your bank in advance to ensure your card will work in Malta's ATMs.

Do not bring foreign currency, and avoid carrying large amounts of cash for safety reasons.

Location and Travel

In EP Malta, YL students don't need public transport, we have private transportation to make your staying much more enjoyable. However, here you will find some information about walking distances.

From school



The closest sand beach you can find is St George, just 10 minutes walking. Same as Westin Rock, the closest rock beach to the school. Love monument is 20 minutes away.

From Campus Hub



Mater Dei Hospital is so near, you can see it from some of the windows of Campus Hub. You will find a nice harbour just 20 minutes from Campus Hub.

Living costs

(sample prices for items in this city)

- Bottle of water: €1
- Coffee: €2.50
- Can of coke: €2.30
- Meal out for two: €50
- Takeaway pizza: €12
- Sandwich: €5
- Local bus ticket: €2
- Cinema ticket: €9.50

Useful apps



Tallinja

Malta's Public Transport system



Bolt

Fast and affordable rides



Visit Malta

Official Malta app by the Malta Tourism Authority



Word Reference

The world's more powerful dictionary translation website.



Staying Safe and Respectful in Malta:

What you need to know

Local customs

Women in Malta are equal to men and should always be treated fairly.

Maltese people talk to strangers in public areas. This is a great way to practice English, but caution should be taken. You should not give out your address and telephone number or accept inappropriate invitations.

“Please” and “thank you” are very important words! Always use them if you ask someone to do something for you, or if they help you or give you information.

Malta is a culturally diverse nation where people of all ethnic backgrounds are treated equally.

Tipping is customary in Malta and a gratuity of between 5% and 10%, whenever good service has been provided is reasonable. However if a service charge has already been included in the bill, a tip is not necessary. If discretion and common sense is used, you will have no problems with tipping, but it is always worth checking the individual establishment's policy if you are unsure.

Laws

No one under the age of 17 in Malta may consume alcohol. Smoking tobacco is prohibited for anyone under 18. It is against the law to buy tobacco for someone you know who is under the age of 18.

Driving under the influence of alcohol is very serious crime and police make regular random checks.

Buying, selling, and using drugs is illegal.

Student code of conduct

You must attend all classes. If you do not attend your classes your representative will be informed. If you do not then improve your attendance you may be sent home. 100% attendance is needed to be able to receive a Certificate of Attendance.

Be on time for all your lessons.

Always tell English Path if you are going to be absent from school for any reason and tell your homestay if you are out for the evening with your group leader.

If you commit a criminal offence or have to be severely disciplined, you will be sent home. We will also inform the immigration authorities.

Be respectful, polite and open to different cultures

Malta Traffic regulations

For drivers,

- Drive on the left hand side of the road
- Observe all posted speed limits and road signs
- You must stop at all STOP signs and red traffic lights
- Everyone in the vehicle must wear a seat belt (see below for exceptions to this rule)
- Obey all directions given by police officers
- Give way to all emergency vehicles which have their sirens and/or lights flashing

For pedestrians,

- When it is safe go straight across the road – do not run.
- Keep looking and listening for traffic while you cross, in case there is any traffic you did not see, or in case other traffic appears suddenly.
- Look out for cyclists and motorcyclists travelling between lanes of traffic.
- Do not walk diagonally across the road.

Procedures in case of arrest by the police

If you're arrested the police must:

- identify themselves as the police
- tell you that you're being arrested
- tell you what crime they think you've committed
- explain why it's necessary to arrest you
- explain to you that you're not free to leave

Medical Insurance

All TCN (third country nationals) students must have medical insurance for the duration of their stay in Malta. They can either book medical insurance offered by English Path or they can choose their own.

Accessing Healthcare in Malta

If a student needs medical treatment, he/she has to let the Programme Coordinator know. You should ideally go to the pharmacy close to the school, where you will find a Doctor if needed too. In the event of an emergency or accident students need to go to the local hospital, Mater Dei, close to the residence. Be aware that hospital patients are treated according to need so students with minor problems may have to wait.

Medical Costs (Approximate)

Medical costs are at the discretion of your local doctor or hospital. Minimum medical costs are as follows:

- Consultation with a doctor: €20 - €35
- Prescriptions at a chemist: €15
- Dental treatment: €65 - €120
- Eye test or new glasses: €30 - €80

If you get sick

If you get sick while in Malta you should visit a doctor. You can ask the Student Services team where the nearest doctor is. If you have a minor illness, you can ask staff at a local pharmacist for advice. Remember to bring any relevant insurance or medical documentation with you

Protecting your belongings

We strongly recommend you take out insurance for your personal belongings, especially cameras, music players, mobile phones and laptops. Personal items cannot be covered by English Path shared apartments or residence insurance

Prescription Medications

Remember to bring enough of your prescribed medication with you as Maltese pharmacists will not dispense a foreign prescription. International customs agents may ask you questions about your medication upon your departure or arrival, so be sure to pack it carefully. Bring any important medical records (blood type, prescriptions, x-rays) that might be useful for medical care abroad as well as contact information for your health care providers at home.

Mental Health and Wellbeing

If you are experiencing mental health difficulties, there are several options for support.

You can speak to the YL Coordinator or a member of the EP Staff, they will help you or can recommend an appropriate service for you.

We can provide immediate support on:
Pre-existing health Concerns/ Mental health Wellbeing
Anxiety
Culture shock/ Homesickness
Confidential Support in a private room for one to one or via WhatsApp

If they are severe conditions, we can suggest one of the credited centers to receive professional assistance.

Emergency and First Aid

If you or someone else has a serious accident or needs immediate medical help:

- Call 112 for emergency services
- Inform the EP office or use the emergency phone – staff will assist you immediately
- Paramedics will provide an initial check and help determine further steps

Fire Safety

If you discover a fire, press the fire alarm button on the nearest alarm. Leave the building immediately via the fire exit. Make sure you tell a member of EP staff exactly what happened so they can call 112. If you hear the fire alarm, leave the building immediately. Do not run, use the lift or stop to collect your belongings. EP staff will guide you to the fire exit. Go to the assembly point. Follow any instructions given by a member of EP staff and do not go back into the building until you are told to do so by EP staff.

Personal Safety & Protecting Your Belongings

Malta is generally a safe place but, you should always be alert. Some tips are: Be alert when you are walking alone at night. Avoid carrying large amounts of cash. Do not leave your belongings unattended. In Malta, you do not need to always carry your identification card or passport with you, you can keep it at home and carry a picture of your ID on your phone or a photocopy in your bag.

What you can expect from EP YL's

At EP YL's, we care about you. Your safeguarding and wellbeing are very important to us. We strive to ensure your stay is surrounded by a safe and stable environment so you can focus on enjoying your experience, learning, and growing.

Following norms and rules helps create a respectful and supportive atmosphere where everyone can thrive and get along.

At EP, our mission is to provide high-quality, motivating courses that help students:

Learn

We aim to help you improve your English skills to achieve your personal goals. That's why we employ excellent, experienced, and dynamic teachers who maintain high teaching standards.

Excel

We want all students to do their best. Our creative and challenging classes are designed to bring out your full potential. At the end of your course, you will receive a Certificate of Attendance showing your achieved level.

Grow

Language learning is a great way to build confidence and grow as a person. Experiencing other cultures helps broaden your horizons. Our lessons and activities are designed to support your personal development and help you flourish during your EP experience.

As part of your journey with EP, you will also receive:

- A friendly and efficient service from the Young Learners (YL's) Team to support you with any queries, problems, or questions.
- An initial placement test by the Academic Team to ensure you are placed at the right level.
- A modern, clean, safe, and well-lit environment to study in.
- An engaging activity programme with free and paid options, linked to your study programme to enhance your learning.
- Advice on further studies, such as exam classes, further or higher education.

What we expect from you

We cordially invite you to:

- Behave well at all times and everywhere you are.
- Respect all school rules and policies (available on our website).
- Follow local etiquette and cultural norms.
- Be punctual and attend all classes. 100% attendance is required for all Young Learner programmes.
- Speak the language at all times, practice makes perfect!
- Get to know and interact with your classmates. It's a great opportunity to make friends.
- Attend the school's induction presentation and read the student handbook, both contain important information to help you make the most of your stay.
- Keep Student Services informed of any changes in your personal circumstances, we care about your safety and wellbeing.
- Tell an EP YL's staff member if you are not feeling well, we need to keep the school updated about any absences.
- Refrain from eating or drinking (except water) in the classroom.
- Do not use your phone during class unless your teacher asks you to do so.

Respect and Responsibility

- Cyber or in-person bullying or harassment will not be tolerated under any circumstances.
- At EP YL's, we follow the British values of democracy, the rule of law, individual liberty, and respect for other people's values and beliefs.
- Smoking is not allowed. It is also banned in all public indoor spaces in Malta.
- There are strict laws against illegal drugs. Penalties can be very serious, do not use or possess illegal substances during your stay.
- If you a minor, it is illegal to buy, attempt to buy, or consume alcohol, or for anyone else to buy it for you.

Students may be asked to leave their course early if they do not follow the Code of Conduct or EP's Disciplinary Policy.

Code of Conduct

General Behaviour

At EP YL's, we want everyone to enjoy their time, learn lots, and stay safe. To help make that happen, we ask you to follow the rules below. These rules are here to protect you and everyone around you. Students may be asked to leave their course early if they don't follow the code of conduct or EP's disciplinary policy.

- Be kind, polite and respectful to other students, staff, group leaders and members of the public.
- Treat others as you would like to be treated. Bullying, harassment (in person or online), and discrimination will not be tolerated.
- Respect everyone's culture, religion, background and identity. We all come from different places and that makes our school special.
- Follow all EP YL's rules and instructions from staff, they are here to keep you safe.

● If a student breaks the rules, they may receive a warning, be removed from activities or classes, and in serious cases, parents or guardians will be contacted and the student may be sent home.

In Class

- Speak English at all times, this helps everyone improve!
- Be on time and attend all your lessons. You must attend 100% of classes, this is part of our programme.
- Phones are not allowed in class, unless your teacher asks you to use it for learning.
- No food or drink in classrooms (except bottled water).
- Tell a staff member if you feel unwell and can't attend class.

Personal Conduct & Safety

- Follow laws: no smoking, no drinking alcohol, no drugs.
- If you are a minor, it is illegal to buy or drink alcohol or smoke.
- Drugs are strictly forbidden, this is a serious offence.
- Do not leave the school or residence without permission or a staff member.
- Respect curfews/supervision rules, these are there to protect you.

Digital Behaviour

- Use phones, laptops and the internet responsibly and kindly.
- Do not post hurtful or inappropriate content about others.
- If you see something that makes you uncomfortable, tell a staff member immediately.

Reporting Concerns

- If you are unhappy, feel unsafe, or see something wrong, talk to a staff member
- You can also email our confidential welfare support team at: younglearners@englishpath.com

Maltese Values

- Respect for the law
- Individual liberty and personal choice
- Equality and fairness
- Tolerance and respect for other cultures, beliefs and lifestyles

Life in Malta

Leisure time



Valletta

The Entire City Of Valletta Is A UNESCO World Heritage Site. Today, the Renaissance city, with its auberges, palaces and fortifications, bears testimony to a bygone time. Alongside contemporary life, the city showcases 450 years of history on every street



Mdina

Mdina is one of Malta's most popular tourist destinations because there's no place like it anywhere. Sitting on top of a hill overlooking large parts of Malta, it's a small town, rich in history and hidden away inside tall bastion fortifications.



Marsaxlokk

Marsaxlokk is a small, traditional fishing village in the South Eastern Region of Malta. It has a harbour, and is a tourist attraction known for its views, fishermen and history. Marsaxlokk holds a market each weekend, and is the best place for seeing the traditional Maltese boats!



Gozo

Gozo meaning "joy" in Castilian, is the second largest Island of the Maltese archipelago, with a population of approximately 30,000. It boasts an impressive coastline with its red sandy beaches, magnificent cliffs and unique karst features.

Life in Malta

Cultural



Feast Fireworks

Fireworks in Malta have a long tradition which is centuries old. Indeed the craft of pyrotechnics in Malta goes back to the time of the Order of the Knights of St John. Malta is famous for its incredible fireworks, even holding an International Firework Festival every spring!



Ta' Qali Crafts Village

Ta'Qali Craft Village is located in the center of Malta. You can watch the craftsmen blowing and forming glass (a famous practise in Malta), visit the goldsmiths filigree and beautiful jewellery and have a look at the beautiful sculptures and lace.



National Museum of Archaeology

A spectacular collection and an alluring experience of the Maltese Islands' prehistory and early history. With artefacts dating back from Malta's Neolithic period (5900-2500BC) up till the early Phoenician period (8th – 6th Century BC), this Museum is definitely your first step to understanding the richness of the land you tread on, its people and their ancestors.



Ftira

Ftira is a ring-shaped, leavened, Maltese bread, usually eaten with fillings such as sardines, tuna, potato, fresh tomato, onion, capers and olives.



Pastizzi

Malta's most famous pastry - the pastizzi can be found in any pastizzeria (pastry shops) in every town! They are a crispy and flaky pastry traditionally filled with ricotta or peas, though you can even get chicken flavoured pastizzi.



Gbejniet

These small, round cheeses are produced using sheep milk, salt and rennet. They're served fresh, sundried, salt-cured or peppered, and are all equally delicious.



Imqaret

Deep-fried pastries filled with warm, spiced dates and hints of citrus. Traditionally diamond-shaped, but now often cut into rectangular slices. A sweet Maltese treat you'll spot at village feasts and markets



Blue Grotto

Discover one of Malta's most stunning natural sights! The Blue Grotto is a series of sea caves where sunlight hits the water just right, creating a glowing, electric-blue effect that feels almost magical. Perfect for a boat ride, a photo stop, or just soaking in the beauty of the Mediterranean.



Riviera Beach

A quieter counterpart to nearby Golden Bay, Riviera Beach is known for its golden-red sand, peaceful atmosphere, and dramatic natural beauty. It's a favourite among locals for swimming, hiking the surrounding cliffs, or catching unforgettable sunsets. A tranquil escape just a short ride from the city.



Paradise Bay Beach

This small sandy cove nestled beneath high cliffs offers crystal-clear blue water perfect for swimming, snorkeling, or simply soaking up the sun. Located at Malta's northern tip near the Gozo ferry and surrounded by rugged scenery, it's a tranquil seaside gem - with restaurants on site too!

Leisure and Supervision

Our Young Learner programmes include a full timetable of exciting cultural, educational, and social activities to help you enjoy the best of city life while making friends and practising your language in real-world settings.

Activities include sightseeing tours, cultural visits, sports, themed evenings, and excursions to iconic destinations such as museums and royal parks.

Weekly Activity Schedule

A weekly activity schedule is shared at the centre, during induction and a reminder is shared the day before of the agenda for next day. Please note:

- All activities are mandatory unless otherwise advised for specific reasons (e.g. illness).
- The programme has been carefully designed to balance learning, fun, and student welfare.

Supervision & Ratios

Student safety is our top priority. Supervision is provided at all times by trained staff:

- 1:20 ratio for students aged 13+
- 1:15 ratio for students aged 8–12

Staff roles are clearly allocated for each excursion, including first aiders, group leaders, and designated meeting points. Extra care is taken during transport, high-traffic areas, and late returns.

Before Every Excursion

Before any outing, you'll attend a compulsory safety briefing which covers:

- The destination and cultural context
- Emergency contact information
- How to stay safe and what to do if separated
- The name and phone number of your lead staff member

Free Time – Supervised Independence

During some city visits, short periods of free time are allowed in clearly defined areas.

You'll be asked to:

- Remain in small groups
- Share your live location with EP staff via mobile phone
- Check in at set times and return to the meeting point punctually

This helps you enjoy some independence while ensuring staff can support you at all times.

Support for Parents

At EP, we understand how important it is for parents to feel informed and reassured while their child is studying abroad. We are committed to clear and responsible communication.

Communication Protocol

In most cases, all communication with families will be made via the partner agent through whom the booking was arranged. This includes updates on:

- Attendance or unexplained absences
- Illness or medical concerns
- Behavioural or safeguarding issues


In the rare event of a serious emergency or where immediate contact is required, we may contact parents/guardians directly if it is deemed necessary for the child's safety or wellbeing.

Staying in Touch

- Students are encouraged to stay in regular contact with families
- Wi-Fi is available in both the residences and the teaching centre
- Phone or video calls can be made during free time, especially in the evenings

24/7 Emergency Support

We operate a 24-hour emergency contact number for urgent situations. This number will be shared before arrival and is available to agents and families.

 Please only use this number for genuine emergencies, as it may be needed to support a student in immediate need.

We are here to safeguard your child's experience and wellbeing at all times.

A Final Note

We are happy to welcome you to EP Young Learners. Let us begin our journey together filled with new discoveries and experiences.

It's your attitude that helps us do great things in different ways. You inspire us to keep improving, and it's your enthusiasm that drives us to do our best.

Let's encounter new possibilities, embrace learning, and create memories for life.

Let's enjoy the ride together!

#memoriesforlife



All Young Learners Centers

EP Greenford

891 Greenford Road, Greenford
UB6 0HE

EP Dubai

EP Block 3, Dubai Knowledge
Park, Al Sufouh 2, Dubai, United
Arab Emirates

EP Middlesex

The Burroughs, London NW4 4BT

EP Riyadh (locals only)

.Gernaata Square QPRR+3F8
عراش رفعجوبا روصنملا,
Riyadh 13241, Saudi Arabia

EP Dublin

Clarinda Park North, Dun
Laoghaire Co. Dublin Ireland
Summer School: UCD, Belfield,
Dublin 4, Ireland

EP Toronto

36 Victoria St, Toronto, ON M5C
1H3, Canada

EP Paris

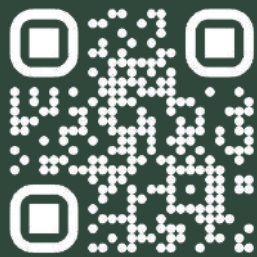
98 Rue Didot, 75014 Paris, France

EP Brisbane

Level 3/4 115 Queen Street
Brisbane, Queensland 4000,
Australia

EP Malta

West Block Marguerite
Mangion Street St.
Julian's Malta STJ 3180



@englishpathschools

West Block, Triq Margaret
Mangion, St Julian's STJ 3180,
Malta.

