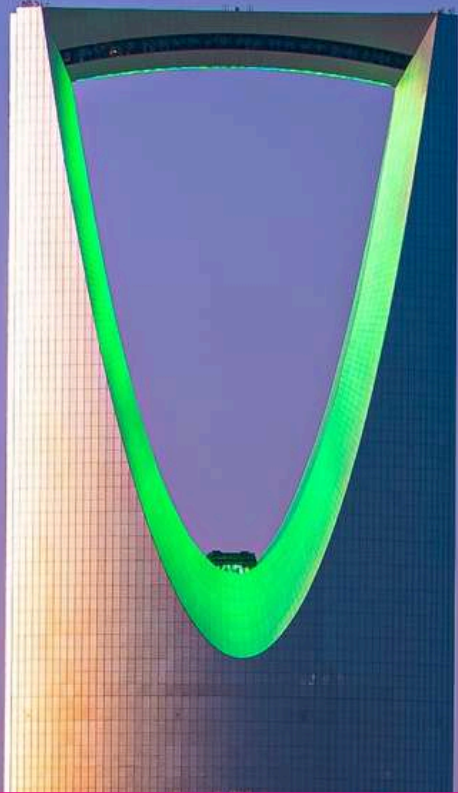




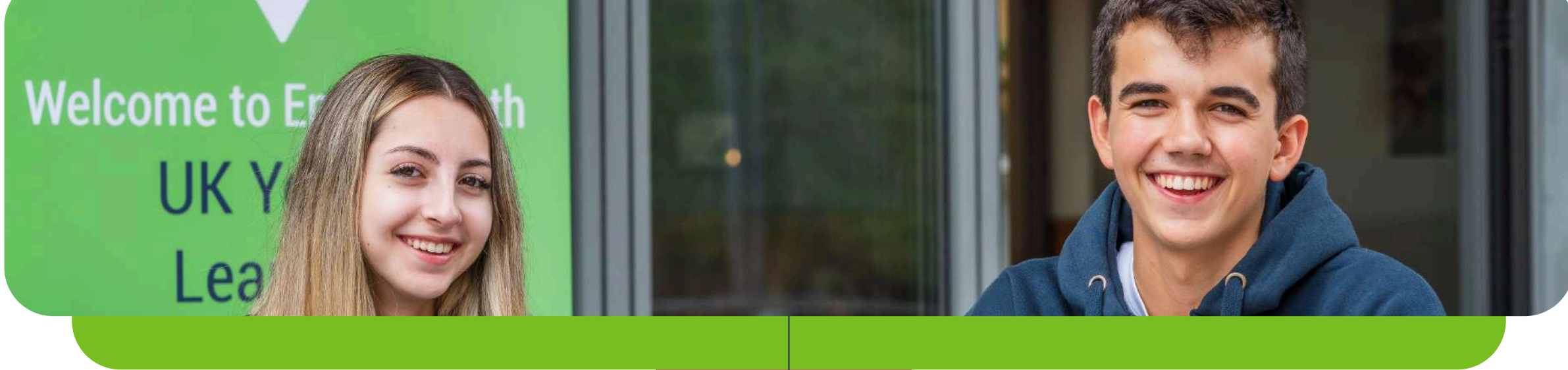
Young
Learners



2026

Riyadh

Student Handbook



Contents

Vision, Purpose, Mission and Values	1
Mental Health and Wellbeing	2
About City	3
About School	5
Safety, Welfare and Safeguarding	7
Holidays	8
About your Course	9
How to Practice	11
Placement Test	13
Timetable	14
Expectations	15
Code of Conduct	17
Leisure and Supervision	19



We're so excited to have you with us. Whether you're here for a short stay or a longer journey, you're now part of a vibrant, supportive community across amazing cities like London, Dubai, and Malta. Our team is here to help you learn, grow, and make unforgettable memories. If you need anything, just reach out, we're always happy to help.

**Enjoy the journey, and
welcome to the EP family!**

VISION, PURPOSE, MISSION AND VALUES

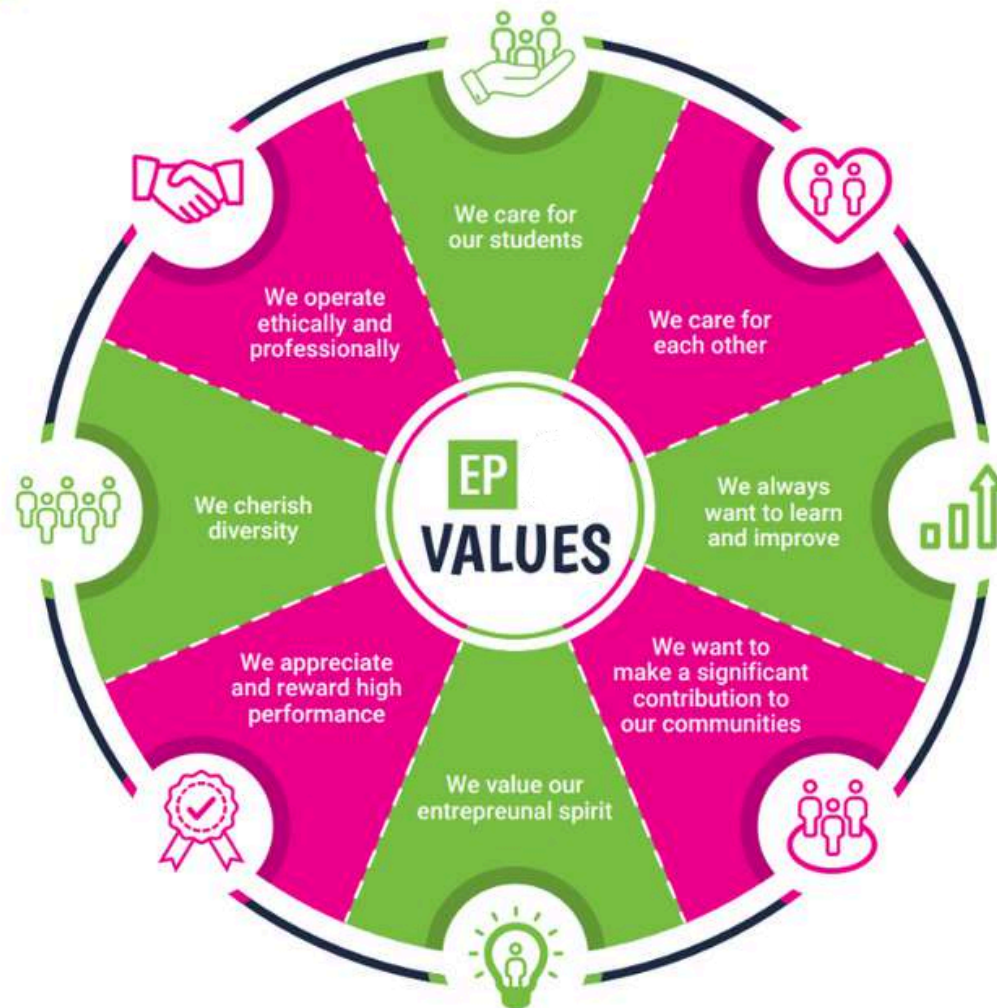
What can you expect from the school?

Vision: To create the world's most accessible and innovative language school that changes lives through education that makes a fundamental difference to living standards.

Purpose: To establish and maintain a singular cross-cultural communication tool in a divided world, bringing people together through a common language. People who can communicate without barriers are more likely to work together for the common good. That is the reason for EP's existence. We believe that everyone has the right to education and language is often the first step.

Mission: A world in which every person can communicate using a common language removing inequality and creating a level playing field. Courses that stimulate and challenge. Students that learn, excel and grow.

Values:



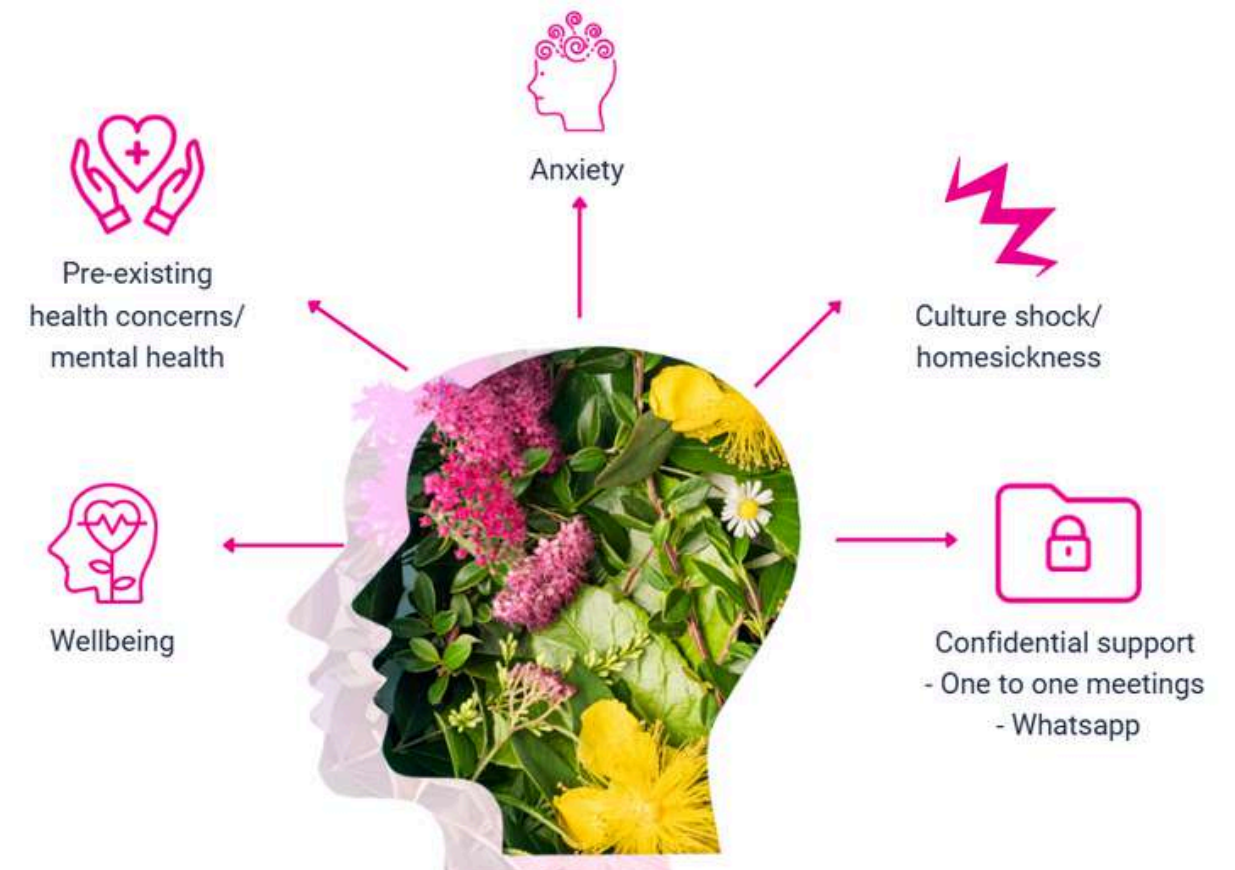
MENTAL HEALTH AND WELLBEING

How can we help?

If you are experiencing mental health difficulties, there are several options for support. You can speak to the YL Coordinator or a member of the EP Staff, we will help you or can recommend an appropriate (professional assistance) service for you.

- Pre-existing health Concerns/ Mental health
- Wellbeing
- Anxiety
- Culture shock/ Homesickness
- Confidential Support in a private room for one to one or via WhatsApp

EP holds your health and wellbeing at heart so should you need help, remember that EP staff is here to support you.



24/7 EMERGENCY PHONE NUMBER: +96 6112700522

About EP Riyadh

Riyadh, the vibrant capital of Saudi Arabia, is a dynamic metropolis that seamlessly blends tradition and modernity. Nestled in the heart of the Arabian Peninsula, this rapidly evolving city is known for its striking skyline, state-of-the-art infrastructure, and deep-rooted cultural heritage. As the political and economic hub of the Kingdom, Riyadh offers a unique fusion of contemporary innovation and historical richness—from gleaming skyscrapers to ancient mudbrick forts. The city boasts world-class dining, luxury shopping, and a growing arts and entertainment scene, all set against the backdrop of the expansive desert landscape. With its warm hospitality, ambitious vision for the future, and rich cultural fabric, Riyadh offers an experience that is both inspiring and authentically Arabian.



English Path

English Path is one of the fastest-growing language schools, offering high quality English courses tailored to learners of all ages, levels, and goals. With a reputation for excellence, we provide a welcoming and professional environment where students can achieve their language ambitions, socialise, and develop new skills for personal and professional success.

EP Riyadh

Our Riyadh campus is located in the vibrant Ash Shuhada district, just a short distance from Granada Mall, making it a convenient and accessible location for everyone. Whether you're a local student, a working professional, or part of a corporate team seeking to enhance language skills, English Path Riyadh is ideally situated to meet your needs.

Offers

We offer a wide range of courses, including General English, Business English, IELTS preparation, and customised corporate training programmes. Our highly qualified and experienced instructors and flexible schedules ensure an enriching learning experience designed to fit your lifestyle and objectives.

Alternative things to do

Join us at English Path Riyadh and take the first step toward achieving your English language goals in a world-class setting.

5 Reasons to choose EP Riyadh

- 1 UK-accredited excellence
- 2 Prime Location
- 3 Excellent Transport Links
- 4 International Connectivity
- 5 Diverse Course Selection



 Staff



Meet the team


Why choose to study in our EP Riyadh School?

- EP is a UK establishment and follows British English standards.
- 7 minute drive from Granada square and Mall.
- Minutes from metro station and plenty of parking available
- 20 minute drive to King Khalid International Airport (RUH).
- Interesting & varied course offering
- Experienced Customer Experience & Academic Team

English Path delivers English language training on behalf of the Global Institute of Entrepreneurship (GIE), the licensed training provider overseeing all course delivery and compliance.










Find us on Google maps

 **Gernaata Square QPRR+3F8.**
عراش رفعجوبا روصنملا,
Ghirnatah, Riyadh 13241,
Saudi Arabia

 **Emergency: +96 6112700522**

Close to your EP school

Our centrally located school is walking distance to:

	Food court with restaurants	On Site
	Bank/ATM	On Site
	Gym	3 minutes
	Metro station	17 minutes
	Grocery store	2 minutes
	Granada Mall	24 minutes
	Bus Station	2 minutes

Services & facilities

English Path and GBS Higher Education College, are part of Global Education Group. Together, our students share fantastic and modern university style facilities. At EP Riyadh we have the following facilities:

Buildings: 1
Floors: 1
Total number of classrooms: 8

School facilities: Reception area with seating, selfstudy area, Wi-Fi (Free), Elevator, Street parking, modern & spacious classrooms with smart TVs, AC/Heating.

Other services provided: : Social activity events and advice, airport transfer, accommodation service.

Levels of English offered: Elementary to Advanced.

Reception: The friendly Student Services staff can direct you to your EP classroom. A Student Services Officer and Director of Studies will always be present to answer any questions you may have.



Your **EP Riyadh** Welfare & Safeguarding Team

Do you have a question?

Point of Contact



Rami Alarasi
Centre and
Academic Manager

To speak to a member of staff please call:

 **+96 6112700522**

Call us 24 hours per day, 7 days per week.

School holidays & **Riyadh** public holidays

2026 - 2027

Eid al-Fitr: Celebrated at the end of Ramadan, lasting for 3-4 days.

Eid al-Adha: Celebrated about two months after Eid al-Fitr, lasting for 4-5 days.

Saudi National Day: Celebrated on September 23, marking the unification of the Kingdom of Saudi Arabia.

Founding Day: Celebrated on February 22.


The school will be closed during the holidays. Please make sure to book your course/accommodation accordingly. Public Holidays are subject to change according to government announcements.

When the school is closed on a Monday, new students start on Tuesday.

Please, note Islamic New Year, Eid AlFitr (Ramadan), Eid Al-Adha, Prophet Muhammad's Birthday, dates are determined by the Islamic lunar calendar and are likely to shift each year. We recommend doublechecking the exact dates closer to those times to ensure accurate planning for your course.

Course days that fall on a public holiday are not reimbursed. The above dates are observed as holidays in the year.

If you arrive on a week where the Monday is a holiday, your first day of school will be a Tuesday.

 **Need help?
Not satisfied?
Have a problem?**

At EP we believe that communication and an open-door policy is key to efficiently resolving any issue you might have. If you need help, are not satisfied with one of our services or you need advice, please talk to our staff at school. They will be able to help and assist quickly with any concerns you might have.

About your course

Teaching methodology

At EP we use the communicative approach which means:

- A focus on speaking
- Interactive lessons
- Noticing students' gaps and reacting to them
- Going beyond the textbook
- English for real life outside the classroom
- Understanding each student's individual needs

All EP teachers are trained in this approach from their first day, so students have the same experience in all levels at all EP locations.

School material

Books: We use a range of age-appropriate teaching materials designed specifically for young learners.

Additional material used: Audio, Digital Presentation Material, Authentic Materials.

Students

Average Number of students per class: 15

Minimum age of students: Can vary

Average age of students: Can vary

Nationality mix: Can vary

End of course certificate: you will receive a course certificate at the end of your course.

Extracurricular activities

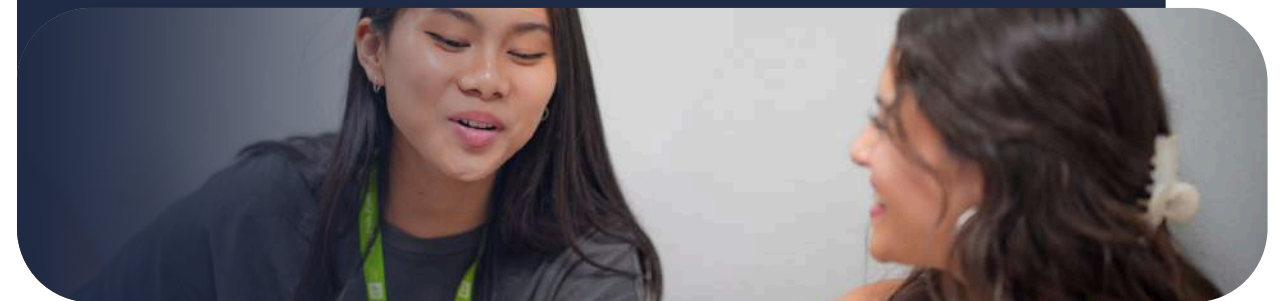
- Placement test to ensure accurate placing in levels
- Varied course materials
- Continuous progress monitoring

Library and Study area

There is a bright study area available for students, offering a great space to support your learning. You'll also find open spaces where you can work with classmates and access the internet.

How to

improve your language skills during or outside of your course



Study skills

Study Skills refer to the ability to frame and improve our learning. For example, what do we do when we learn a new word? Do we make notes? How? It's very important that we are organised in the way we learn, so that we have a much better chance of remembering the language and using it correctly in the future.

We would like to share with you some ways to keep learning and improving your English skills. If you practice these Study Skills, they will help you to continue your English language learning wherever you are.

Listening, Reading and Writing

What to listen to?

Try to listen to as many different types of spoken language as possible to improve your listening.

- Music and songs, TV shows, the news and films
- Speeches and interviews
- Audiobooks

What to write?

Think about the language you've learnt that week and try the following:

- Write an email to a friend/your teacher
- Write a diary/journal entry each day
- Write your shopping list in English

What to read?

There's so much you can read to practice your skills.

- Find an interesting article online?
- Choose a book you've read in your own language and get reading!
- Find an e-book and read on your daily commute to work or studies.

How to

practice vocabulary?



When you record vocabulary, you should also include longer phrases like:

phrasal verbs (e.g. get away with),
multi-word expressions (e.g. How's it going?),
idioms (e.g. raining cats and dogs),
and collocations (e.g. take a chance).

Quizlet 



Download the [Quizlet app](#) – create your own set of flashcards, practice and test yourself!

Cut strips of paper or use index cards. Using your Language Bank, write a word on one side and the translation or definition on the other. Lay the cards on a table and test yourself by placing either all the language sides or all the translations/definitions face down and checking your memory.

Create two cards for each word, one with the word, one with its translation. Spread all the cards on a table and play a game of Snap! Here's how:

- Make two cards for each word and its translation.
- Place all cards face down on a table.
- Turn over two cards at a time.
- If a word and its translation match, you have a Snap!
- Put matched cards aside and continue until all are matched.
- Try timing yourself to complete the game as quickly as possible.



Other useful websites for Learning and Practice

- [bbclearningenglish.com](#)
- [englishclub.com](#)
- [lyricstraining.com](#)
- [ted.com](#)
- [voscreen.com](#)

Exam Practice

- [flo-joe.com](#)
- [cambridge.org](#)
- [ieltspeaking.co.uk](#)
- [ieltsliz.com](#)

Grammar, Pronunciation and Vocabulary

- [bbclearningenglish.com](#)
- [englishclub.com](#)
- [lyricstraining.com](#)
- [ted.com](#)
- [voscreen.com](#)

Extra tip: Using a dictionary

Dictionaries are a useful resource for researching different meanings, collocations, examples of use and standard pronunciation. Use a mono-lingual dictionary and focus on understanding the meaning rather than translation of individual words. Translating individual words can often lead to misunderstandings.

A great, big paper mono-lingual dictionary is best but Cambridge, for example, have an online advanced learners' dictionary at www.dictionary.cambridge.org, which is easy to use and provides examples of word use.

Placement Test

At EP, we use the CEFR (Common European Framework of Reference for Languages) to place you in the most suitable class for your age & level.

Prior arrival you have to complete a placement test (grammar, writing, and speaking) so we can place you into the right group. You'll be in a class with students who are at a similar level, so you can feel confident and make progress.

<https://forms.gle/DZZqGqZ15GaYaar27>

During the course, your teachers and our academic team will check your progress. You'll also complete a mid-course feedback questionnaire to help us improve your learning experience.

At the end of your programme, you will receive an EP Certificate of Attendance, which includes:

- Your name and course dates
- Your CEFR level
- Your attendance record

Timetable

Your classes will vary throughout the week. Monday to Friday, you will have a 3-hour lesson per day.

During the rest of the week, you will take part in:

- Half day activities

On excursion days, you will be provided with a packed lunch, and you will return to campus in time for dinner. On other days, after your morning activities, you will go to school for lunch and some free time before your 3-hour evening class, which includes two short breaks.

After class, it's dinner time, followed by evening activities. You'll then return to your accommodation before curfew (10:00pm/22:00)

Please remember:

- Students must not leave the premises unaccompanied.
- Curfew times and all school rules must be respected at all times for your safety and that of others.

What you can expect from EP YL's

At EP YL's, we care about you. Your safeguarding and wellbeing are very important to us. We strive to ensure your stay is surrounded by a safe and stable environment so you can focus on enjoying your experience, learning, and growing.

Following norms and rules helps create a respectful and supportive atmosphere where everyone can thrive and get along.

At EP, our mission is to provide high-quality, motivating courses that help students:

Learn

We aim to help you improve your English skills to achieve your personal goals. That's why we employ excellent, experienced, and dynamic teachers who maintain high teaching standards.

Excel

We want all students to do their best. Our creative and challenging classes are designed to bring out your full potential. At the end of your course, you will receive a certificate showing your achieved level.

Grow

Language learning is a great way to build confidence and grow as a person. Experiencing other cultures helps broaden your horizons. Our lessons and activities are designed to support your personal development and help you flourish during your EP experience.

As part of your journey with EP, you will also receive:

- A friendly and efficient service from the Young Learners (YL's) Team to support you with any queries, problems, or questions.
- An initial placement test by the Academic Team to ensure you are placed at the right level.
- A modern, clean, safe, and well-lit environment to study in.
- An engaging activity programme with free and paid options, linked to your study programme to enhance your learning.
- Advice on further studies, such as exam classes, further or higher education.

What we expect from you

We cordially invite you to:

- Behave well at all times and everywhere you are.
- Respect all school rules and policies (available on our website).
- Follow local etiquette and cultural norms.
- Be punctual and attend all classes. 100% attendance is required for all Young Learner programmes.
- Speak the language at all times, practice makes perfect!
- Get to know and interact with your classmates. It's a great opportunity to make friends.
- Attend the school's induction presentation and read the student handbook, both contain important information to help you make the most of your stay.
- Keep Student Services informed of any changes in your personal circumstances, we care about your safety and wellbeing.
- Tell an EP YL's staff member if you are not feeling well, we need to keep the school updated about any absences.
- Refrain from eating or drinking (except water) in the classroom.
- Do not use your phone during class unless your teacher asks you to do so.

Respect and Responsibility

- Cyber or in-person bullying or harassment will not be tolerated under any circumstances.
- At EP YL's, we follow the British values of democracy, the rule of law, individual liberty, and respect for other people's values and beliefs.
- Smoking is not allowed. It is also banned in all public indoor spaces in Dubai.
- There are strict laws against illegal drugs. Penalties can be very serious, do not use or possess illegal substances during your stay.
- If you a minor, it is illegal to buy, attempt to buy, or consume alcohol, or for anyone else to buy it for you.

Students may be asked to leave their course early if they do not follow the Code of Conduct or EP's Disciplinary Policy.

Code of Conduct

General Behaviour

At EP YL's, we want everyone to enjoy their time, learn lots, and stay safe. To help make that happen, we ask you to follow the rules below. These rules are here to protect you and everyone around you. Students may be asked to leave their course early if they don't follow the code of conduct or EP's disciplinary policy.

- Be kind, polite and respectful to other students, staff, group leaders and members of the public.
- Treat others as you would like to be treated. Bullying, harassment (in person or online), and discrimination will not be tolerated.
- Respect everyone's culture, religion, background and identity. We all come from different places and that makes our school special.
- Follow all EP YL's rules and instructions from staff, they are here to keep you safe.

● If a student breaks the rules, they may receive a warning, be removed from activities or classes, and in serious cases, parents or guardians will be contacted and the student may be sent home.

In Class

- Speak English at all times, this helps everyone improve!
- Be on time and attend all your lessons. You must attend 100% of classes, this is part of our programme.
- Phones are not allowed in class, unless your teacher asks you to use it for learning.
- No food or drink in classrooms (except bottled water).
- Tell a staff member if you feel unwell and can't attend class.

Personal Conduct & Safety

- Follow laws: no smoking, no drinking alcohol, no drugs.
- If you are a minor, it is illegal to buy or drink alcohol or smoke.
- Drugs are strictly forbidden, this is a serious offence.
- Do not leave the school or residence without permission or a staff member.
- Respect curfews/supervision rules, these are there to protect you.

Digital Behaviour

- Use phones, laptops and the internet responsibly and kindly.
- Do not post hurtful or inappropriate content about others.
- If you see something that makes you uncomfortable, tell a staff member immediately.

Reporting Concerns

- If you are unhappy, feel unsafe, or see something wrong, talk to a staff member
- You can also email our confidential welfare support team at: younglearners@englishpath.com

British Values

- Respect for the law
- Individual liberty and personal choice
- Equality and fairness
- Tolerance and respect for other cultures, beliefs and lifestyles

Leisure and Supervision

Our Young Learners programmes include a full timetable of exciting cultural, educational, and social activities to help you enjoy the best of city life while making friends and practising your language in real-world settings.

Activities include sightseeing tours, cultural visits, sports, themed evenings, and excursions to iconic destinations such as museums and royal parks.

Weekly Activity Schedule

A weekly activity schedule is shared at the centre, during induction and a reminder is shared the day before of the agenda for next day. Please note:

- All activities are mandatory unless otherwise advised for specific reasons (e.g. illness).
- The programme has been carefully designed to balance learning, fun, and student welfare.

Supervision & Ratios

Student safety is our top priority. Supervision is provided at all times by trained staff:

- 1:20 ratio for students aged 13+
- 1:15 ratio for students aged 8–12

Staff roles are clearly allocated for each excursion, including first aiders, group leaders, and designated meeting points. Extra care is taken during transport, high-traffic areas, and late returns.

Before Every Excursion

Before any outing, you'll attend a compulsory safety briefing which covers:

- The destination and cultural context
- Emergency contact information
- How to stay safe and what to do if separated
- The name and phone number of your lead staff member

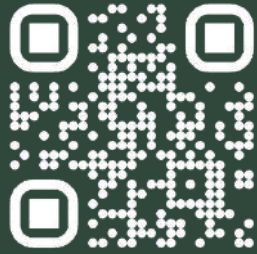
Free Time – Supervised Independence

During some city visits, short periods of free time are allowed in clearly defined areas.

You'll be asked to:

- Remain in small groups
- Share your live location with EP staff via mobile phone
- Check in at set times and return to the meeting point punctually

This helps you enjoy some independence while ensuring staff can support you at all times.



@englishpathschools

Gernaata Square QPRR+3F8,
عراش رفعجوبا روصنملا,
Ghirnatah,
Riyadh 13241, Saudi Arabia



All Young Learners centers

EP Greenford

891 Greenford Road, Greenford
UB6 0HE

EP Middlesex

The Burroughs, London NW4 4BT

EP Dublin

Clarinda Park North, Dun
Laoghaire Co. Dublin Ireland
Summer School: UCD, Belfield,
Dublin 4, Ireland

EP Paris

98 Rue Didot, 75014 Paris, France

EP Malta

West Block Marguerite
Mangion Street St.
Julian's Malta STJ 3180
Summer School: WFFF+RH3, Sir
L. Prezios, Pembroke, Malta

EP Dubai

EP Block 5, Dubai Knowledge
Park, Al Sufouh 2, Dubai, United
Arab Emirates

EP Riyadh (locals only)

.Gernaata Square QPRR+3F8
عراش رفعجوبا روصنملا,
Ghirnatah,
Riyadh 13241, Saudi Arabia

EP Toronto

36 Victoria St, Toronto, ON M5C
1H3, Canada

EP Brisbane

Level 3/4 115 Queen Street
Brisbane, Queensland 4000,
Australia