



English  
Path



# Student Handbook 2024

Malta



Welcome to  
English Path.

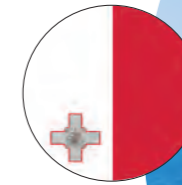
This guide will help  
you make the most  
of your experience  
at EP Malta.

## Contents

About Malta .....	4
About the School .....	6
About your Course .....	8
Accommodation .....	11
Student Residence (Campus Hub) .....	12
Shared Apartments .....	13
Social Programme .....	14
Recommendations .....	15
When you Arrive .....	16
Airport Transport .....	19
How to extend your visa .....	20



# About Malta



## Famous landmarks

- St. John's Co-Cathedral, Mdina, Valletta, Three Cities, Hagar Qim Temples, Spinola Bay, Popeye Village, Mosta Dome, Blue Lagoon, Gozo.



## Town personality

- St. Julian's, Malta, is a cosmopolitan town known for its vibrant nightlife, seaside charm, diverse cuisine, and welcoming atmosphere. It offers a mix of modern entertainment and traditional Maltese elements, making it a popular destination for both partygoers and those seeking a cultural and seaside experience.



## What makes this town unique?

- St. Julian's, Malta, is unique for its vibrant nightlife, stunning seaside location, fusion of tradition and modernity, diverse cuisine, and tourist-friendly atmosphere.



## Restaurants within a 10-minute walk

- Maltese, British, Chinese, European, French, Greek, Indian, Italian, Japanese, Mexican, Seafood, Thai, Vegetarian.



## Alternative things to do

- Explore museums, visit temples, enjoy many exciting summer activities (kayaking, windsurfing, beach) and winter activities (hiking, theatre, horse riding).



## Transport within a 1 minute walk

- Bus.

5

Reasons to choose this city

1

One of the most vibrant towns in Malta

2

Stunning beaches and water sports

3

Varied restaurants and cuisines

4

Variety of cultural events (art, music, dance)

5

Enjoy year-round outdoor activities



# Why Choose to Study in Our EP Malta School?

- **Centrally located** in St Julian's, a seaside town in Malta
- **Interesting & varied** course offering
- **Minutes from** bus terminal and a sandy beach
- **Social Programme** with weekend trips to Valletta, Gozo, Comino, Blue lagoon & many more
- **Experienced** Customer Experience & Academic Team



Find us on Google maps

**Address: West Block Marguerite Mangion Street St Julian's Malta**  
At this address since: 2022

**Phone: +356 27432278**  
**Emergency Phone: +356 99276152**

## Staff

**Allen Lofaro**  
Head of Europe Operations



- **Staff on-site:** Ekaterina Naumova – Director of Studies, Pamela D'Emanuele – Assistant Director of Studies, Maria Alejandra Lopez – Student Services Officer, Giuseppe Abramo – Student Services Assistant, Gabriela Prado – Student Services Assistant.
- **Languages spoken by staff:** English, Portuguese, Spanish, Russian, Italian, Maltese, Turkish.

## Services & facilities

- **Buildings:** 1
- **Floors:** 3
- **Total number of classrooms:** 11
- **School facilities:** Student lounge, library & student study area, free Wi-Fi, elevator, street parking, modern & spacious classrooms with smart TVs, AC/heating, outdoor terrace, IT Lab, wheelchair accessible.
- **Other services provided:** Social activity programme, airport transfer, medical & travel insurance, neighbourhood agreements offering discounts to all our students.
- **Levels of english offered:** All levels.
- **Reception:** The friendly **Student Services** staff can direct you to the EP offices and classrooms. A Student Services Officer and a Director of Studies will always be present to answer any questions you may have.

## School holidays & Malta public holidays

The school will be closed from 25th December 2023 to 1st January 2024. It will also be closed from 23th to 27th December 2024. Please make sure to book your course/accommodation accordingly. Course days that fall on a public holiday are not reimbursed.

### Public holidays will be:

- **2023:** 08 Dec, 13 Dec, 24 Dec 2023 - 01 Jan 2024
- **2024:** 10 Feb, 19 Mar, 29 Mar, 31 Mar, 01 May, 07 Jun, 29 Jun, 15 Aug, 08 Sep, 21 Sep, 08 Dec, 13 Dec, 23 Dec - 27 Dec, 01 Jan 2025

The above dates are observed as holidays in the year. If you arrive on a week where the Monday is a holiday, your first day of school will be a Tuesday.



## Close to your EP school

Our centrally located school is walking distance to:

- |   |  |
|---|--|
| <b>Cafes and Restaurants</b><br>1-5 minutes | <b>Cinema &amp; Bowling Alley</b><br>5 minutes |
| <b>Supermarket</b><br>1 minute              | <b>Bus Stop</b><br>1 minute                    |
| <b>Post Office</b><br>5 minutes             | <b>Sliema</b><br>30 minutes                    |
| <b>Pharmacy</b><br>5 minutes                | <b>Beach</b><br>5 minutes                      |
| <b>Bank/ ATM</b><br>2 minutes               | <b>Balluta Bay</b><br>20 minutes               |
| <b>Gym</b><br>1 minute                      | <b>Shopping Centre</b><br>5 minutes            |

## Need help? Not satisfied? Have a problem?

At EP we believe that communication and an open-door policy is key to efficiently resolving any issue you might have. If you need help, are not satisfied with one of our services or you need advice, please talk to our staff at school. They will be able to help and assist quickly with any concerns you might have.

# First Day at School

## Morning Students

(Or Semi-intensive afternoon)

- 08:45 – Arrival at school + check in
- 09:10 – Writing and speaking placement test
- 10:00 – Induction
- 11:00 – First day class start
- 12:30 – First day class finishes
- 12:30 – Orientation tour

## Afternoon Students

- 13:15 – Arrival at school + check in
- 13:30 – Writing and speaking placement test
- 14:00 – Induction
- 14:45 – Orientation tour
- 15:30 – First day class start
- 17:00 – First day class finishes

## Evening Students

- 17:00 – Arrival at school + check in
- 17:15 – Writing and speaking placement test
- 18:00 – Induction
- 18:45 – Orientation tour
- 19:00 – First day class start
- 20:45 – First day class finishes

Induction: this includes a placement test, induction presentations about the school and academic programmes and the distribution of class timetables.

An orientation tour of the local area: this includes useful information, such as nearby facilities, pharmacy, post office, bus stop, etc.).

An evening welcome party + drink.

On your first day, you are expected to bring your passport and proof of medical insurance.

## Your weekly class timetable

	Hours pw	What	Lesson times
<b>Classic Morning</b>	15	General English	09:15 - 12:30
<b>Classic Afternoon</b>	15	General English	13:45 - 17:00
<b>Classic Evening</b>	15	General English	17:30 - 20:45
<b>Semi-Intensive Morning</b>	18.75	Classic + 1 Elective	09:15 - 13:30
<b>Semi-Intensive Afternoon</b>	18.75	Classic + 1 Elective	12:45 - 17:00
<b>Super Intensive</b>	30	Classic	09:15 - 17:00

## Courses

- **Classic**  
15 hours per week
- **Semi-Intensive**  
18.75 hours per week
- **Super Intensive**  
30 hours per week
- **IELTS Exam Preparation**  
15 hours per week
- **Professional certificates** such as Business Management, Sustainability, Leadership & Digital Marketing Essentials  
15 hours per week

## Extracurricular activities

- Monthly course tutorials
- Monthly skills test
- Weekly unit test
- Masterclass Programme
- Conversation clubs
- Study Clinics

## Electives list

Mixed levels within classes. Each topic runs for 4 weeks. Employability runs in cycles 1-4.

	Elective Cycle 1		Elective Cycle 2		Elective Cycle 3		Elective Cycle 4	
	Jul, Nov, Mar		Aug, Dec, Apr		Sep, Jan, May		Oct, Feb, Jun	
	A1 - B1	B1+ - C1	A1 - B1	B1+ - C1	A1 - B1	B1+ - C1	A1 - B1	B1+ - C1
Speaking	█	█						
Listening	█	█						
Reading			█	█				
Writing			█	█				
Pronunciation					█	█		
Idioms & Phrasal verbs					█	█		
Grammar							█	█
Vocabulary							█	█
	A1 - B1	B1+ - C1	A1 - B1	B1+ - C1	A1 - B1	B1+ - C1	A1 - B1	B1+ - C1
Everyday English	█	█						
Debate & Public Speaking	█	█						
Business English			█	█				
English for Hospitality			█	█				
Digital Marketing					█	█		
Personal Branding					█	█		
IELTS Preparation							█	█
Academic Skills							█	█
Employability Skills	█	█	█	█	█	█	█	█

12:45 - 13:30 (Mon - Fri)

 **Teaching methodology**

**At English Path we use the communicative approach which means:**

- A focus on speaking
- Interactive lessons
- Noticing students' gaps and reacting to them
- Going beyond the textbook
- English for real life outside the classroom
- Understanding each student's individual needs

**All EP teachers are trained in this approach from their first day, so students have the same experience in all levels at all EP locations.**

 **School material**

**Books:** Empower 2nd Edition (Cambridge) + digital pack; Language Hub (Macmillan) + digital pack.

**Additional material used:** Audio, Digital Presentation Material, Authentic Materials.

**Class outings:** On a constant basis the students have outside the school lessons/ activities to bring teaching closer to real life.

 **Students**

**Average number of students per class:** 15

**Minimum age of students:** 16

**Average age of students\*:** 27 years old

**Nationality mix\*:** Students from all over the world

\*As per 2023 stats. Nationality mix and age varies.

**End of course certificate:** you will receive a course certificate at the end of your course.

**Take a look at our graduation ceremony**



 @englishpathschools





# Accommodation

**Accommodation is a vital part of your experience in a new country. Your new home is an important part of your study experience. Each school has specially chosen options to help make the most out of your stay. Homestay and student residences offer different accommodation experiences, but always meet the highest standards.**

All accommodation options are based on availability. Please make sure you check with your representative if we have availability.

## What accommodation option should I choose?

The choice of accommodation depends on your preferences, needs, and budget. Below are some important factors you need to consider.

	Student Residence	Shared Apartments
	Convenient location, typically close to campus. Easy access to good facilities and nearby amenities. 24h reception.	Meet other students from all over the world. Easier to socialise. Can be more affordable.
	Noise levels might be high. Might be sharing facilities with other students. Might be expensive.	May have to deal with shared chores and responsibilities. You might not be able to choose your flatmates.

## Booking Student Accommodation in 3 simple steps

- | <u>Step 1</u>   | <u>Step 2</u>  | <u>Step 3</u>   |
|---|--|---|
| <p>You can indicate your preferred type of accommodation (homestay, shared apartment or residence) on the application form during your application for a course. Our Student Services team will record the preferred choice of accommodation.</p> | <p>EP will be able to secure the accommodation option once the invoice has been paid. Our team will send you the accommodation confirmation with further details on the selected option.</p> | <p>You will need to confirm your arrival and send your flight details to our team, as soon as the flight is booked and no later than one week before the flight date. Our team will be able to book and confirm your accommodation and/ or transfers and provide more details within the confirmation document.</p> |



# Student Residence (Campus Hub)

Finding ways to relax when on campus plays a big part in any student's life, so whether it's a hot cup of coffee, a whopping burger or some well needed retail therapy that chills you out, Campus Hub has it all.

- Twin and Single bedrooms
- Spacious, fully equipped
- Laundry facility on site
- Communal Kitchen with Cable TV & utilities
- Wi-Fi
- Cleaning one time per week
- Gym (extra charge applies)
- Outdoor swimming Pool
- Student Lounge
- Food & Retail Outlets

**Address:** University of Malta Tal-Qroqq L-Imsida



## About the Residence

### Accommodation types:

Single room with private bathroom.  
Twin room with private bathroom.

**Bedrooms:** The bedroom contains the following: bed, pillow, bedding, chair, desk, window, closet.

**Bed size:** Single bed.

**Bathroom:** Private bathroom.

**Kitchen:** The kitchen in the unit contains the following: fridge, freezer, cooker, oven, cutlery, plates, pans, microwave.

**Facilities:** Spacious lobby, study room and on-site laundry, WIFI.

**Facilities at extra cost:** On-site laundry.

**Cleaning service:** Light cleaning service once a week. It is also the students' responsibility to maintain cleanliness in the kitchen by washing their dishes, pans and silverware after cooking.

**Linens/towels:** Clean, fresh linens and sheets upon arrival and changed once a week.

**Neighbourhood:** Msida is a harbour town situated very near the capital Valletta on the northeast coast of Malta. As its Arabic-derived name implies, it knows its origins as a fishing village although today it is mostly associated with the University of Malta, the GF Abela Junior College and the Mater Dei General Hospital. However, Msida still operates a very active and attractive Yacht Marina in its very sheltered inlet of Marsamxett Harbour.

**Visitors/guests:** Visitors are only allowed in the common areas & must leave by 9pm. No overnight visitors. Penalty fine for visitors in unit after 9 or overnight.

**Noise:** Residents must respect all other residents and maintain a noise level that does not disturb others. Quiet hours are from 10pm-8am.

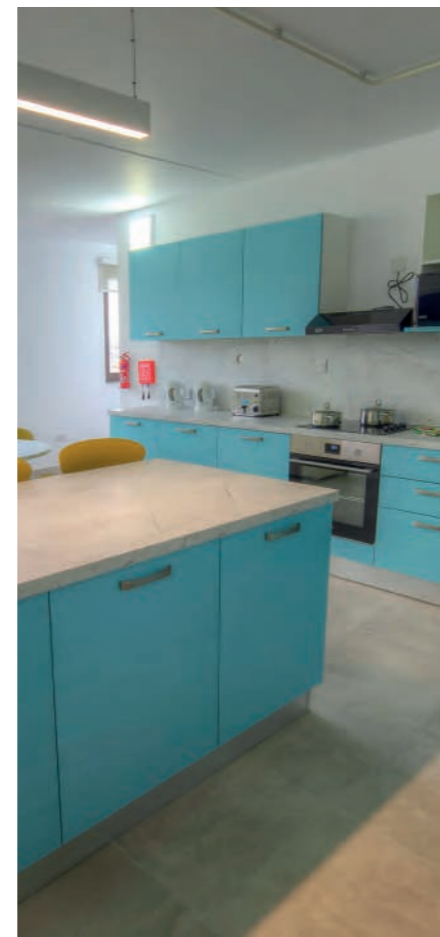
**Smoking:** Smoking is prohibited in all facilities and in residents' rooms.

**Reception/security:** Campus reception is available 24/7.

**Minimum weeks requests:** Minimum stay of 2 weeks. Sunday to Sunday booking.

**Check-in/check-out:** Check-in 24 hours/ Check-out at 10:00.

**Location of the accommodation:** 20-30 min by public transport from the school.



# Shared Apartments

- Our apartments are located in Sliema, a coastal town situated on the northeast of Malta, adjacent to St. Julian's.
- Shared bedrooms
- Balcony
- Wi-Fi
- Cleaning included once a week
- Walking distance to restaurants, shopping centre, and more
- Shared kitchen
- Shared Bathroom
- 20 minutes from Valletta (capital city)
- Walking distance to public transport

**Address:** 68 Triq Pace, Tas-Sliema



## About the Shared apartments

### Accommodation types:

The bedroom contains the following: bed, pillow, bed linen, chair, desk, window, wardrobe, safe and hangers.

**Bed size:** Single beds.

**Bathroom:** Shared bathroom = 4 students maximum sharing.

**Kitchen:** The kitchen in the unit contains the following: fridge, freezer, cooker, oven, frying pans, microwave, mixer, coffee maker and cutlery.

**Facilities:** Wi-Fi, fitted kitchen, fridge, washing machine.

**Neighbourhood:** Sliema is a coastal town situated on the northeast of Malta, adjacent to St. Julians. Once the home of Malta's aristocracy; it has now become a major commercial area, very popular for shopping, bars, cafes, restaurants and hotels.

**Visitors/guests:** Our apartments are for the use of our students only.

**Noise:** Residents must respect other residents and maintain a noise level that does not disturb others. No loud music or noise is allowed after 11pm.

**Smoking:** Smoking is strictly prohibited.

**Reception/security desk:** There is no reception or security desk.

**Cleaning service:** A cleaning service is available once a week. Students are responsible for keeping their rooms clean. Bed linen change is not included. It is also the students' responsibility to maintain cleanliness in the kitchen by washing their dishes, pans and cutlery after cooking.

**Bed linen/towels:** Clean and fresh bed linen and sheets on arrival. Students are responsible for cleaning up after check-in. Towels are not provided.

**Minimum weeks requests:** Minimum stay of 2 weeks. Sunday to Sunday booking.



# Social Programme

Our school not only offers lessons (morning, afternoon and evening) but organises daily social activities to improve the English language, meet new people and new cultures, and above all allowing the students to have a complete life experience.

## Examples of social activities

- International meetup
- English Cafe Sit & Talk
- Trip Gozo-Comino Blue Lagoon
- Trip Blue Grotto
- Popeye Village
- Karaoke
- Mdina tour
- Dark tour
- Mosta tour
- Valletta tour
- National Aquarium

Check our live Social Programme here



## Example timetable

Mon	Tues	Wed	Thurs	Fri	Sat/Sun
Orientation walk	Conversation Club	Valletta tour	Football match	International meetup – English Cafe	Trip Gozo-Comino Blue Lagoon
Welcome party	International dinner	Karaoke	English Cafe Sit & Talk	Harbor Cruise Birgu	Trip Blue Grotto
					Paddle Sea Activity



# Recommendations

## Checklist & other useful information

Here are a few important items that you should bring with you:

- Passport
- Acceptance letter
- Accommodation letter
- Proof of health/medical insurance
- A bit of cash and credit/debit cards/Apple or Google Pay
- Weather-appropriate clothing (depending on the season you come to Malta)
- Adaptor for electrical appliances
- Prescription medication and medical records
- Emergency information
- Airport Transfer confirmation (if booked)

## Before you leave your country

Here are some important things you need to know to make your arrival as smooth as possible. Use our checklist to ensure you don't forget anything and are prepared for the exciting times ahead.

## Pocket money

Recommended weekly budget: €300. This should cover expenses, laundry, local travel, food and activities. You will need additional money if you want to take weekend trips. Bring €150 with you in cash and a debit or credit card. You will need to check with your financial institution to make sure you will be able to withdraw money from an ATM. It is not a good idea to carry around large amounts of cash.

## Clothing

Most students dress casually for classes, but you should bring nice clothes for going out and sportswear for sports and outdoor activities. The climate is changeable and maybe different from your own. The typical temperature is 32-35°C in the Summer and 15-17°C in the Winter, although this can get slightly lower during December & February. Bring waterproof clothing if you're arriving in the Autumn or Winter.

## Electrical current

Standard voltage in Malta is 240 volts; remember to bring an adaptor with you or buy one when you arrive.

## School notifications

We encourage you to follow the school's Instagram account before you arrive and especially during your stay. This will give you an idea of what is happening at the school and help you connect with staff and students. This is also where we will post notification of any unexpected school closures: it is important you check our WhatsApp group account for any messages while you are attending the school. If the school cannot open or school opening will be delayed, we will post a message as soon as possible (the night before or in the morning) to advise you of this, along with information on how to get further updates and any alternate scheduling (if applicable). Follow EP Malta! @EPMalta



# When You Arrive in Malta



Arriving at the airport in a foreign country can be overwhelming. To better prepare yourself, make sure that you have read the information below about your arrival and how to get to your accommodation. If you get lost or confused upon arrival, don't be afraid to ask the airport staff for help as they will be happy to give assistance.

## EP transfers

Students should arrive at Malta International Airport. We request that you book your flights according to the starting date of your specific programme. You must arrive on the Saturday or Sunday prior to your course start date. If you have booked a transfer service, a driver will meet you outside the customs area and drive you to your homestay or residence. Please ensure you arrange and pay the transfer fee in advance.

## Transfer service emergency contact details

If you have any flight changes, miss a connecting flight or need help meeting the transfer service, you should call one of the following emergency numbers. Please be prepared to tell them your name, school name (English Path) and location. Students should only accept a transfer from a greeter with the official English Path signage.

## Transfer service emergency numbers: +356 99276152

## Independent transfers

Taxi Service Cost: €8 - €25.  
Journey time: 30 minutes.

## How to get to the transport card - Tallinja card in Malta:

- Step 1:** Go to the Tallinja website at <https://www.publictransport.com.mt/>
- Step 2:** On the Tallinja website, search for the "bus cards and tickets" page. This is where you can find information about different types of cards and tickets available for public transportation.
- Step 3:** Look for the option to obtain a "Personalized Tallinja Card."
- Step 4:** Register for a Tallinja Card. You will need to provide your personal information during this step.
- Step 5:** When registering, make sure to apply for the adult card. If you are a student planning to stay for more than three months, do not tick the student option.
- Step 6:** You will need to provide a shipping address. You can use the school address for this purpose.
- Step 7:** Upload a photo.
- Step 8:** upload a copy of the first page of your passport as part of the verification process.
- Step 9:** Pay the card cost, which is €17.88.

After completing these steps, your Tallinja card will be processed, and it will take approximately 3 weeks to arrive at the school. You can then claim it from the student services team at your school. It's important to follow these steps well in advance of your arrival in Malta to ensure you have your Tallinja card ready to use for free transport on the island.

## Local customs

- Women in Malta are equal to men and should always be treated fairly.
- Maltese people talk to strangers in public areas. This is a great way to practice English, but caution should be taken. You should not give out your address and telephone number or accept inappropriate invitations.
- "Please" and "thank you" are very important words! Always use them if you ask someone to do something for you, or if they help you or give you information.
- Malta is a culturally diverse nation where people of all ethnic backgrounds are treated equally.
- Tipping is customary in Malta and a gratuity of between 5% and 10%, whenever good service has been provided is reasonable. However if a service charge has already been included in the bill, a tip is not necessary. If discretion and common sense is used, you will have no problems with tipping, but it is always worth checking the individual establishment's policy if you are unsure.

## Health and safety

- **Medical insurance:** All TCN (third country nationals) students must have medical insurance for the duration of their stay in Malta. They can either book medical insurance offered by English Path or they can choose their own.
- **If you get sick:** If you get sick while in Malta you should visit a doctor. You can ask the Student Services team where the nearest doctor is. If you have a minor illness, you can ask staff at a local pharmacist for advice. Remember to bring any relevant insurance or medical documentation with you.
- **Protecting your belongings:** We strongly recommend you take out insurance for your personal belongings, especially cameras, music players, mobile phones and laptops. Personal items cannot be covered by English Path shared apartments or residence insurance.
- **Prescription medication:** Remember to bring enough of your prescribed medication with you as Maltese pharmacists will not dispense a foreign prescription. International customs agents may ask you questions about your medication upon your departure or arrival, so be sure to pack it carefully. Bring any important medical records (blood type, prescriptions, x-rays) that might be useful for medical care abroad as well as contact information for your health care providers at home.

- **Staying safe at school:** If you or another student has an accident or needs urgent medical attention, please come to our main office where the First Aider is located.
- **Fire safety:** Fire safety: If you discover a fire, press the fire alarm button on the nearest alarm. Leave the building immediately via the fire exit. Make sure you tell a member of EP staff exactly what happened so they can call 112. If you hear the fire alarm, leave the building immediately. Do not run, use the lift or stop to collect your belongings. EP staff will guide you to the fire exit. Go to the assembly point. Follow any instructions given by a member of EP staff and do not go back into the building until you are told to do so by EP staff.
- **Personal safety and looking after valuables:** Malta is generally a safe place but, you should always be alert. Some tips are: Be alert when you are walking alone at night. Avoid carrying large amounts of cash. Do not leave your belongings unattended. In Malta, you do not need to always carry your identification card or passport with you, you can keep it at home and carry a picture of your ID on your phone or a photocopy in your bag.



 **Emergency services**

- Call 112 in case of fire, a medical emergency or if you need the police.

 **Medical costs**

Medical costs are at the discretion of your local doctor or hospital. Minimum medical costs are as follows:

- Consultation with a doctor: €20 - €35
- Prescriptions at a chemist: €15
- Dental treatment: €65 - €120
- Eye test or new glasses: €30 - €80

 **Laws**

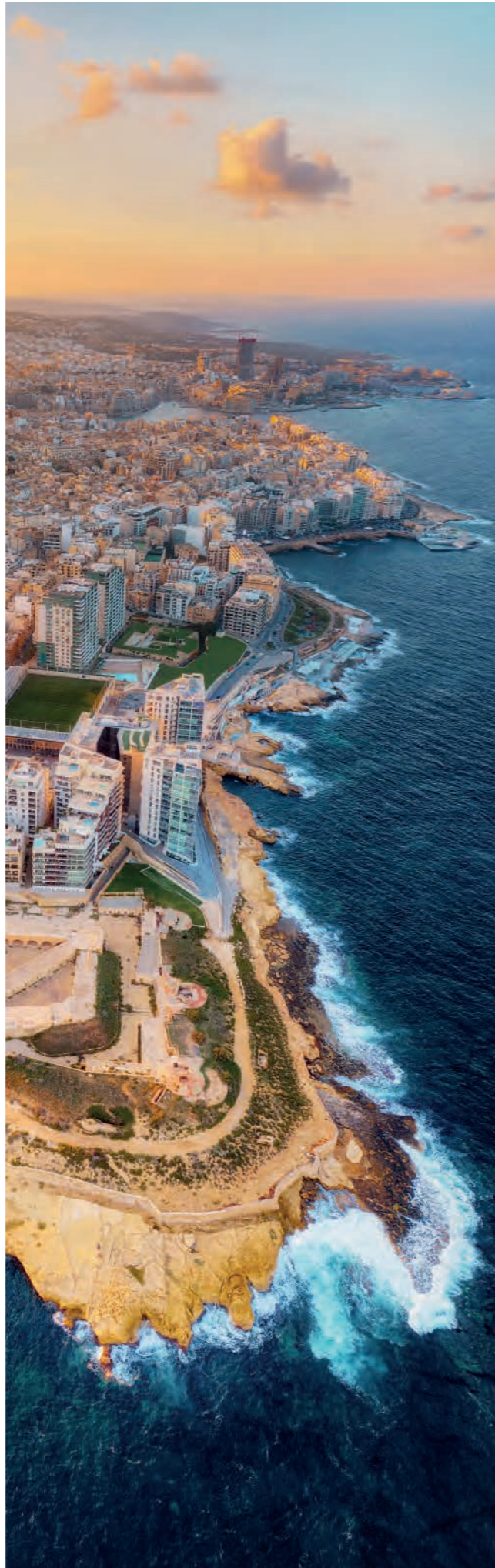
- No one under the age of 17 in Malta may consume alcohol. Smoking tobacco is prohibited for anyone under 18. It is against the law to buy tobacco for someone you know who is under the age of 18.
- Driving under the influence of alcohol is very serious crime and police make regular random checks.
- Buying, selling, and using drugs is illegal.

 **Student code of conduct**

- You must attend all classes. If you do not attend your classes your representative will be informed. If you do not then improve your attendance you may be sent home. 85% attendance is needed to be able to receive a certificate of completion.
- Be on time for all your lessons.
- Always tell English Path if you are going to be absent from school for any reason and tell your homestay if you are going away overnight.
- Always tell English Path if you are going to be absent from school for any reason and tell your homestay if you are going away overnight.
- If you commit a criminal offence or have to be severely disciplined, you will be sent home. We will also inform the immigration authorities.
- Be respectful, polite and open to different cultures.

 **Living costs**  
(sample prices for items in this city)

- Bottle of water: €1
- Coffee: €2.50
- Can of coke: €2.30
- Meal out for two: €50
- Takeaway pizza: €12
- Sandwich: €5
- Local bus ticket: €2
- Local metro and tram ticket: €17 per day
- Cinema ticket: €9.50



# Malta Airport Transport

## Malta International Airport

Mode	Line or number	Cost	Duration (to the centre)
Airport to St Julian's by bus	Bus TD2 (Direct Bus)	€3	30 minutes
Airport to Msida by bus	Bus X1	€2	25 minutes

- If you choose to book an airport transfer, please, your flight details should be sent to us 4 weeks in advance to reassure we will be able to provide you an airport transfer.
- A driver will meet you after you come through the customs area and drive you to your accommodation.

\*Students under 18 years old must book homestay breakfast and lunch & return airport transfers.

 [@englishpathschoools](https://www.instagram.com/englishpathschoools)

 [englishpath.com](https://www.englishpath.com)

# How to extend your visa

## Visa process for Malta

If your country allows you to enter Malta as a tourist (maximum 3 months), you can arrive in the country as a tourist and apply for a study visa (recommended).

## Requirements for Study Visa:

### Receipt and booking:

Receipt of full payment for your course and booking confirmation.

### Certificate of attendance:

A certificate from the school showing your attendance in class. Attendance must be above 85%.

### CEA form or Visa application form

### Passport:

Original passport and scanned copies or photos of all sides.

### Photos:

Two physical ID-sized photos.

### Medical Insurance:

Ensure your insurance covers medical care abroad and is valid for Europe. Coverage should exceed 30,000€ for your entire stay in Malta.

### Return Tickets:

Flight ticket, including all flights from Malta to your home country.

### Financial Support:

If you have accommodation with the school, you need €19 per day for the course and holidays. If you have a rental contract for a flat, you must prove a minimum of €35 per day.

### Payment Card:

Scanned copy or photograph of your credit or debit card.

### Rental Contract

### Rental Declaration Form

### Visa Cost:

The cost of the study visa is 100 euros.

### Note:

It is recommended to arrive in Malta as a tourist and then apply for a study visa after attending at least 30 days or 4 weeks of English classes. This is necessary to obtain the letter of attendance required for visa approval. Please make sure to double-check the specific requirements and procedures with student services area in the school, as visa requirements can change over time.



