

Accommodation

Accommodation is a vital part of your experience in a new country. Your new home is an important part of your study experience. Each school has specially chosen options to help make the most out of your stay. Homestay and student residences offer different accommodation experiences, but always meet the highest standards.

All accommodation options are based on availability. Please make sure you check with your representative if we have availability.



What accommodation option should I choose?

The choice of accommodation depends on your preferences, needs, and budget. Below are some important factors you need to consider.

Hostel

- Budget Friendly.
- Easy access to good facilities and nearby amenities.
- Easier to socialize.

Student Residence

- Convenient location, typically close to campus.
- Easy access to good facilities and nearby amenities.
- 24h reception.

Homestay

- Immerse in local culture & customs.
- Host assistance for queries.
- Towels, kitchen utensils, and more provided.
- Budget-friendly.

- Noise levels might be high.
- Might be sharing facilities with other students.
- You might not be able to choose your flatmates.

- Noise levels might be high.
- Might be sharing facilities with other students.
- Might be expensive.

- May not be as social.
- Host family rules may apply.
- It can be up to 75mins travel.

Booking student accommodation in 3 simple steps

Step 1

You can indicate your preferred type of accommodation (homestay, shared apartment or residence) on the application form during your application for a course. Our Student Services team will make a record of your preferred choice of accommodation.

Step 2

EP will be able to secure the accommodation option once the invoice has been paid. Our team will send you the accommodation confirmation with further details on the selected option.

Step 3

You will need to confirm your arrival and send your flight details to our team, as soon as the flight is booked and no later than one week before the flight date. Our team will be able to book and confirm your accommodation and/ or transfers and provide more details within the confirmation document.

If you arrive at a residence or homestay between 22.00–08.00 you may be asked to book alternative accommodation in a hotel on the first night due to late/early arrival at the accommodation.

Kiez Hostel Berlin

Kiez Hostel is a family-run business with great individuality and a very personal touch. There is a variety of private and shared rooms, each with its own vibrant style. The big shared kitchen and lounge provide a great space for students to get together for fun evenings.

- Shared and private bedrooms
- Shared kitchen
- Shared lounge
- Wi-Fi
- Cleaning included



Address: Marchlewskistraße 88, 10243 Berlin



About the residence

Accommodation types:

Private and Shared.
Shared bedroom-shared bathroom.
Private bedroom-shared bathroom.

Bedrooms: The bedroom contains the following: bed, pillow, bedding, chair, desk, window.

Bed size: Single bed.

Bathroom: Shared bathrooms on each corridor.
Lockable single bathrooms.

Kitchen: There is a kitchen in the hostel which everyone can use.

Facilities: Spacious lobby, study room and on-site laundry, WIFI.

Facilities at extra cost: Cosy lounge and kitchen for all guests to use. Free wifi. €3 for bed linen and towel set.

Cleaning service: There is a daily cleaning service of all bedrooms and bathrooms. Bathrooms are also checked a few times during the day.

Linens/towels: Fresh bedding and towels are provided at check-in for a charge of €3. Students staying for long periods can have a change free of charge at any time.

Neighbourhood: Your hostel is located in the party district of Friedrichshain-Kreuzberg, but in a quiet neighborhood right on Marchlewskistraße. Restaurants, cultural institutions and cool hotspots are just a few minutes' walk away.

Visitors/guests: Visitors must leave by 11 pm. No overnight visitors.

Noise: Residents are required to respect all other residents and maintain a level of noise that does not disturb others. Quiet hours are 10 pm-8am.

Smoking: Smoking is prohibited in all facilities and in residents' rooms.

Reception/security:

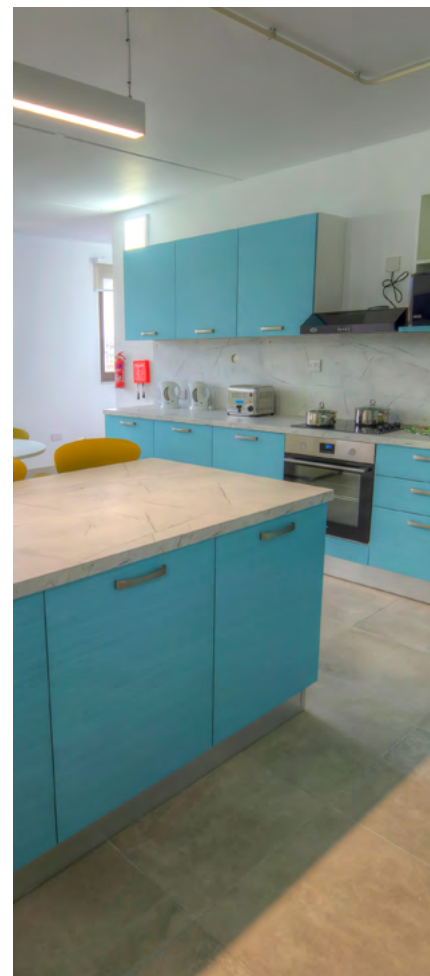
Reception is manned from 9am – 1pm and from 5pm -9pm. Outside these hours there's a 24-hour phone and WhatsApp line.

Minimum weeks requests: 1-week minimum stay. Booking from Saturday to Saturday.

Location of the accommodation:

Within 10 minutes walk of 2 train stations in the Friedrichshain-Kreuzberg district.
35 minutes by public transport to school.

Check-in/check-out: Check-in 5 pm / check-out 10.30 am but flexible with prior notice.



SMARTments

City-West

In one of the most desirable residential areas of the city, your new, fully equipped apartment is close to the Kurfürstendamm and many important sights such as Charlottenburg Palace or Brandenburg Gate. By train, you can get from A to B quickly without having to worry about the traffic jams in the city centre.

- Kitchenette
- Weekly cleaning
- Final cleaning after departure
- Free Wi-Fi
- Utilities included (electricity, heating, water)
- Cleaning supplies

 **Address:** Fasanenstraße 2, 10623 Berlin



About the residence

Accommodation types:

Studio S.
Studio.
Studio XL (Single).
Apartment.

Bedrooms: The bedroom contains the following: bed, pillow, bedding, chair, desk, window, wardrobe, bedside lamp.

Bed size: Single bed.

Bathroom: Private bathroom with shower, WC and high-quality care products.

Kitchen: Fully equipped kitchenette with hob, dishwasher, microwave and much more.

Facilities: All rooms include a comfortable sleeping area, a private bathroom with a shower, high-quality personal care products, a fully equipped kitchenette, free Wi-Fi, and a dining table.

Cleaning service: Weekly cleaning (includes linen change for stays of 7+ nights). Final cleaning after departure. Iron, ironing board, rubbish bags, extra toilet paper, vacuum cleaner, cleaning supplies.

Linens/towels: Fresh clean linen and towels are provided at check-in. They are changed once a week during the cleaning service.

Neighbourhood: It is close to the Kurfürstendamm, where there are numerous shopping opportunities and is surrounded by cafés, bars and restaurants, so you will never get bored. At just 300m from a train station, you can get to any destination in the city very easily.

Visitors/guests: Visitors are allowed as long as they follow the house rules.

Noise: Residents are required to respect all other residents and maintain a level of noise that does not disturb others. Quiet hours are 10pm-6am.

Smoking: Smoking is prohibited in all facilities and in residents' rooms.

Reception/security: Manned reception desk during the week. During weekends and evenings, someone can be reached by phone.

Minimum weeks requests: 2 nights.

Location of the accommodation:

4 min walk to the S-Bahn station.
16 mins from the school by public transport.

Check-in/check-out: Check in from 3 pm / check out until 11 am.



SMARTments

Karlshorst

Located in southeastern Berlin, the Karlshorst district has excellent public transport connections to the city centre. Originally developed as a villa district, it features charming period buildings. Schönefeld Airport is approximately 15 km away, making it a convenient choice for international travellers. Additionally, the Adlershof Science & Technology Park is just 7 km away, adding to the area's appeal.

- Spacious, equipped and furnished apartments
- Weekly cleaning
- Kitchenette
- Wi-Fi
- Utilities included (electricity, heating, water)
- Cleaning supplies

 **Address:** Treskowallee 115, 10318 Berlin

About the residence

Accommodation types:

Studio.
Studio Twin.
Studio XL (Single).
Apartment.

Bedrooms: Comfortable sleeping area with cozy bed (1.60m).

Bed size: Single bed.

Bathroom: Private bathroom with rain shower and high quality care products.

Kitchen: Kitchenette with ceramic hob, sink, dishwasher, capsule coffee machine, microwave, kettle, crockery, cutlery, toaster.

Facilities: All rooms include a comfortable sleeping area, a private bathroom with a rain shower and high-quality personal care products, free high-speed internet, and a flat-screen TV.

Cleaning service: Weekly cleaning included. Cleaning products available for self-cleaning. Iron, ironing board, rubbish bags, extra toilet paper, vacuum cleaner, cleaning supplies available.

Linens/towels: Fresh linen and towels are provided at check-in and changed once a week during cleaning service.

Neighbourhood: Karlshorst is a quiet, well-connected area with good public transport links, providing easy access to central Berlin and local universities. The district has a range of shops, cafés, and restaurants, along with cultural attractions and green spaces for relaxation.

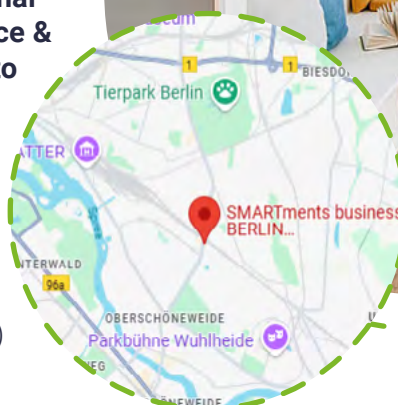
Visitors/guests: Visitors are allowed as long as they follow the house rules.

Noise: Residents are required to respect all other residents and maintain a level of noise that does not disturb others. Quiet hours are 10pm-6am.

Smoking: All facilities and residents' rooms are non-smoking.

Reception/security: Reception is staffed on weekdays, and assistance is available by phone on weekends and outside regular hours.

Minimum weeks requests: 2 nights.



Location of the accommodation:

3 min walk to the S-Bahn station (Karlshorst).

28 min from EP Berlin (Alt Moabit 96C) by public transport.

Check-in/check-out: Check in from 3 pm / check out until 11 am.



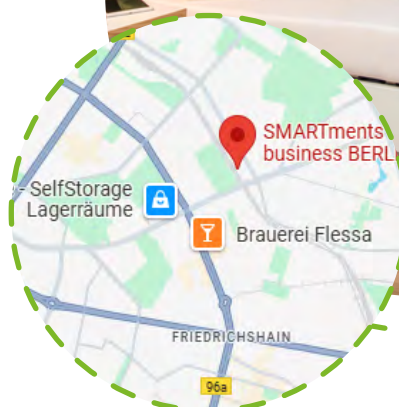
SMARTments

Prenzlauer Berg

Prenzlauer Berg is a popular and lively district in Berlin, known for its creative vibe, good transport links, and great cafés and shops. It mixes historic charm with modern city life.

- Weekly cleaning
- Final cleaning after departure
- Utilities included (electricity, heating, water)
- Wi-Fi
- Kitchenette
- Cleaning supplies

Address: Storkower Straße 156 A,
10407 Berlin



About the residence

Accommodation types:
Studio.

Bedrooms: Comfortable sleeping area with cosy bed (1.40m).

Bed size: Single bed.

Bathroom: Private bathroom with shower, WC and high-quality care products.

Kitchen: Kitchenette with ceramic hob, sink, dishwasher, capsule coffee machine, microwave, kettle, crockery, cutlery, toaster.

Facilities: All rooms include a comfortable sleeping area, a private bathroom with a rain shower and high-quality personal care products, and a flat-screen TV.

Cleaning service: Weekly cleaning included. Cleaning products available for self-cleaning. Iron, ironing board, rubbish bags, extra toilet paper, vacuum cleaner, cleaning supplies available.

Linens/towels: Fresh linen and towels are provided at check-in and changed once a week during cleaning service.

Neighbourhood: Prenzlauer Berg is centrally located, offering quick access to Berlin's universities, cultural spots, and city centre. The area is famous for its cafes, restaurants, boutique shops, and creative energy. Kastanienallee and Kollwitzplatz are popular streets for dining and shopping.

Visitors/guests: Visitors are allowed, provided they follow house rules.

Noise: Residents must be considerate and keep noise levels low to avoid disturbing others. Quiet hours are from 10 pm to 6 am.

Smoking: All rooms and facilities are non-smoking.

Reception/security: Reception is staffed on weekdays and available by phone on weekends and outside regular hours.

Minimum weeks requests: 2 nights.

Location of the accommodation: 5 min walk to S-Bahn & Tram stops. 25 min from EP Berlin (Alt Moabit 96C) by public transport.

Check-in/check-out: Check in from 3 pm / check out until 11 am.



Homestay

Half - board homestay

2 meals per day (breakfast, dinner) from Monday to Sunday. 14 meals per week.

- The average commute is between 15 and 60 minutes by public transportation.
- Live in the home of a local resident.
- Comfortable, safe environment with meals prepared for you.
- Opportunity to practice English with your host.



Things students need to bring

Toiletries, personal items to make student's room feel at home, prescription medication, SIM card, a small gift for the host family (not required).

Meals provided

Yes (depends on booking type, please refer to the table at the top of the page).

Breakfast: Breakfast is usually a light meal consisting of cereal, fruit, toast, juice, or coffee. Hosts will usually ask you to prepare your own breakfast.

Lunch: If full-board: Your host family will prepare a packed lunch for you, which usually consists of a sandwich, fruit or sweets and a drink.

Otherwise: You will be responsible for buying your own lunch at school, from a local restaurant, or the local shops.

Dinner: You will usually eat dinner with your host, or occasionally you may prepare your own meal with food supplied by your host.

Services included

Bed linen, towels, telephone use for emergencies, students need to make sure to discuss laundry with their host family after you arrive as laundry facilities will depend on your individual homestay.

Extra cost of services: No.

Will the Homestay arrange to pick up the student from the airport?

No. However you can book your airport transfer with your EP school. The transfer to your accommodation will then be organised accordingly.

Transport to school

Your host will help you to find your way to and from school on your first day and will show you how to use public transport.

Where are the host families located?

Berlin.

Additional information

Homestays are up to 60 minute commute to the school.