



Young
Learners

2026

Toronto

Student Handbook

Staff



Contents

Vision, Purpose, Mission and Values	1
Mental Health and Wellbeing	2
About City	3
About School	5
About Summer School	7
Safety, Welfare and Safeguarding	9
Holidays	10
First Day at School	11
About your Course	13
How to Practice	15
Placement Test	17
Timetable	18
Accommodation: Residence	19
Recommendations	21
Location and Travel	23
Living Cost	24
Staying Safe and Respectful	25
Expectations	27
Code of Conduct	29
Life in City	31
Leisure and Supervision	35
Support for Parents	37



We're so excited to have you with us. Whether you're here for a short stay or a longer journey, you're now part of a vibrant, supportive community across amazing cities like London, Dubai, and Malta. Our team is here to help you learn, grow, and make unforgettable memories. If you need anything, just reach out, we're always happy to help.

Enjoy the journey, and welcome to the EP family!

VISION, PURPOSE, MISSION AND VALUES

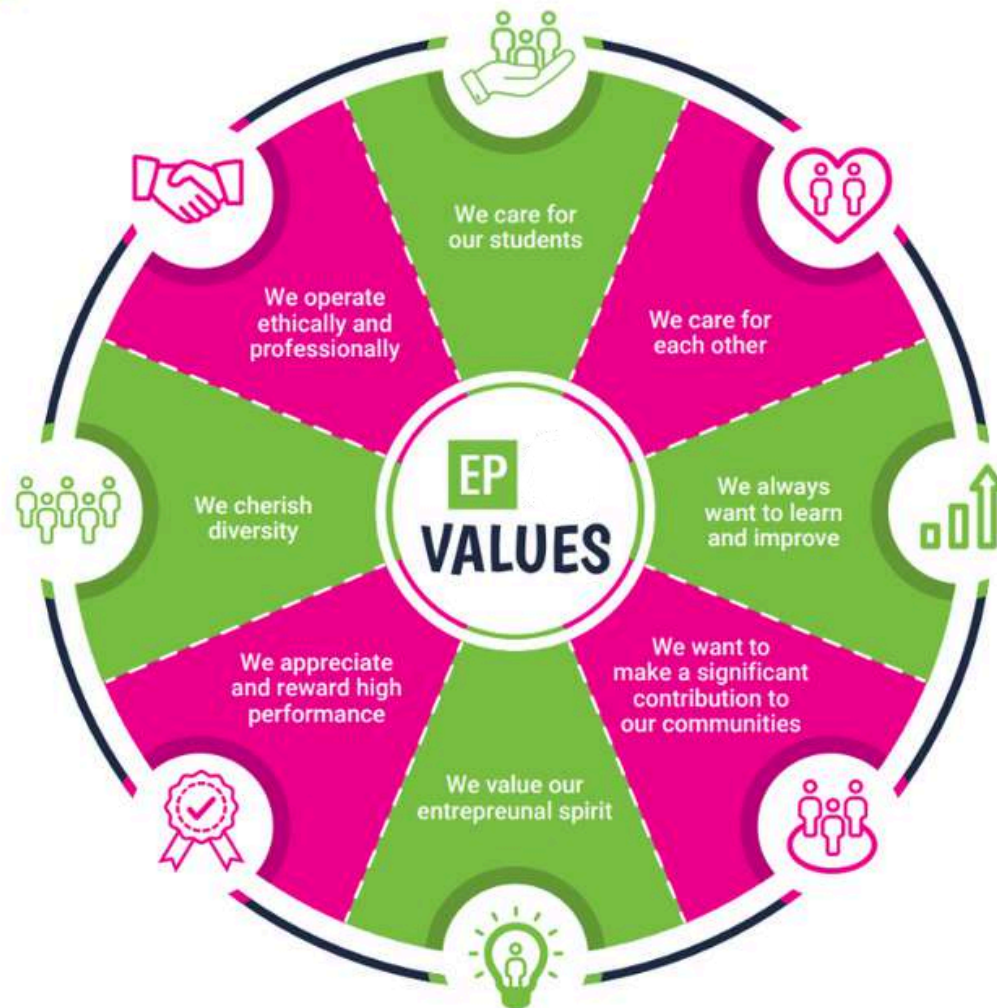
What can you expect from the school?

Vision: To create the world's most accessible and innovative language school that changes lives through education that makes a fundamental difference to living standards.

Purpose: To establish and maintain a singular cross-cultural communication tool in a divided world, bringing people together through a common language. People who can communicate without barriers are more likely to work together for the common good. That is the reason for EP's existence. We believe that everyone has the right to education and language is often the first step.

Mission: A world in which every person can communicate using a common language removing inequality and creating a level playing field. Courses that stimulate and challenge. Students that learn, excel and grow.

Values:



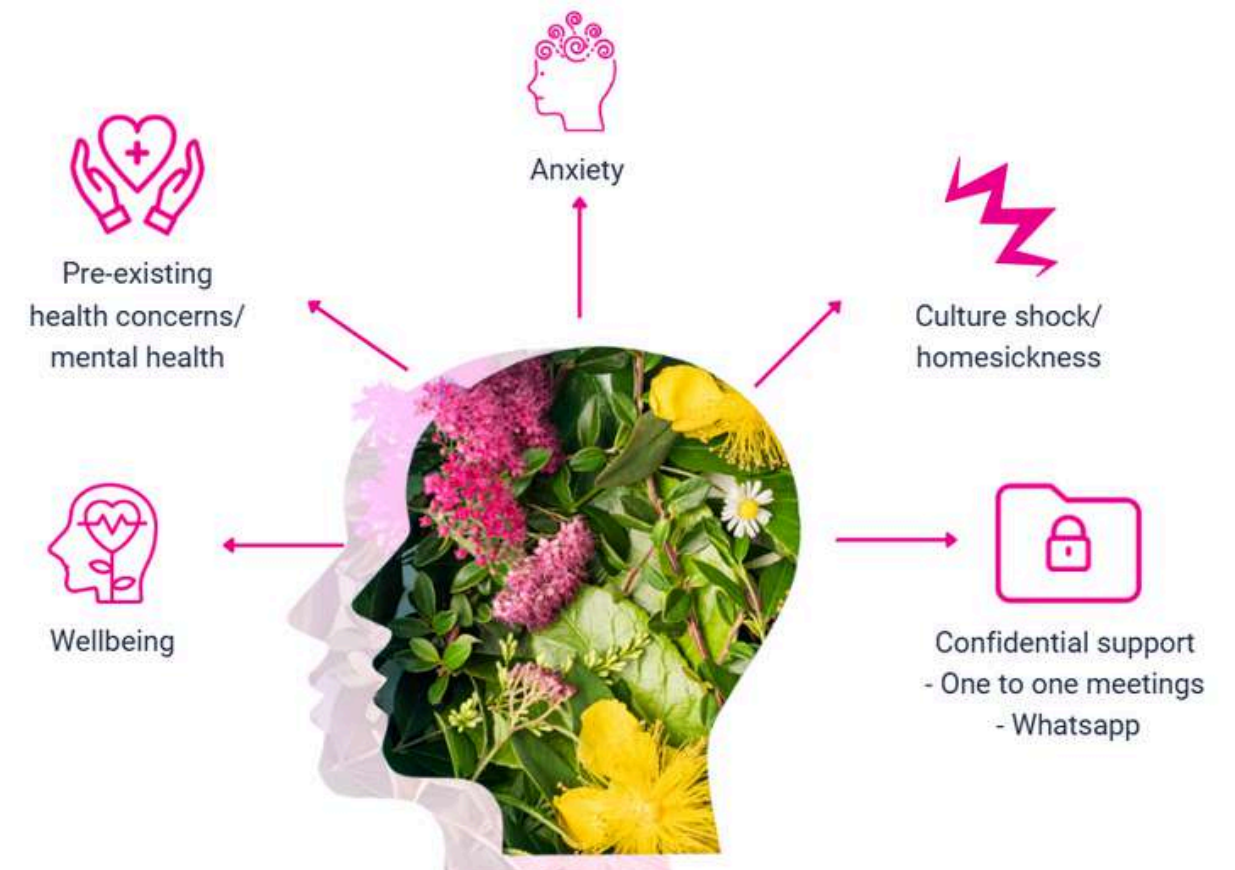
MENTAL HEALTH AND WELLBEING

How can we help?

If you are experiencing mental health difficulties, there are several options for support. You can speak to the YL Coordinator or a member of the EP Staff, we will help you or can recommend an appropriate (professional assistance) service for you.

- Pre-existing health Concerns/ Mental health
- Wellbeing
- Anxiety
- Culture shock/ Homesickness
- Confidential Support in a private room for one to one or via WhatsApp

EP holds your health and wellbeing at heart so should you need help, remember that EP staff is here to support you.



24/7 EMERGENCY PHONE NUMBER: +1 437 655 6453

About Toronto

Nestled on the edge of Lake Ontario, Toronto dazzles with its blend of urban energy and multicultural charm. This dynamic metropolis stands out for its iconic skyline, rich artistic pulse, and inclusive spirit that embraces cultures from around the world. Whether you're wandering through colorful districts, admiring architectural wonders, or diving into world-class museums, Toronto offers endless moments of exploration. It's a city where innovation meets tradition, where every corner holds a story — and where visitors are always made to feel at home.



Famous landmarks

CN Tower, Rogers Centre, Casa Loma, Royal Ontario Museum, Nathan Phillip's Square.

City personality

Multicultural, artistic, foodie, vibrant, innovative, business capital, academic, green, historic and modern.

What makes this city unique?

Largest city in Canada, home of the longest street in the world (Yonge Street), diverse neighbourhoods, close to top tourist destinations: Niagara Falls, French Canada, Ottawa, Montreal, Quebec City.

Transport within a 2-minute walk

Subway and bus.

Restaurants within a 15-minute walk

American, Irish, Chinese, French, Greek, Indian, Italian, Japanese, Mexican, Middle Eastern, Seafood, Thai, Vegetarian, Moroccan, Polish, Caribbean.

Alternative things to do

Explore the many museums, enjoy many exciting winter activities (skiing, snowboarding) and summer activities (canoeing, biking, hiking, festivals).

5 Reasons to choose this city

- 1 One of the most diverse cities in Canada
- 2 Located in a safe environment
- 3 Varied restaurants and cuisines
- 4 Variety of cultural events (art, music, dance)
- 5 Prestigious universities nearby



 Staff



Meet the team

Why choose to study in our EP Toronto School?


- Located in a beautiful Toronto landmark building in the heart of downtown
- Interesting & varied course offering
- Steps from subway station and streetcars
- Social program with weekend trips to Niagara Falls, French Canada, New York and many more
- Experienced customer experience & academic team



Find us on Google maps














 EP: 36 Victoria St, Toronto, ON M5C 1H3, Canada

At this address since: 2023

 School number: +1 437 995 4831
Emergency: +1 437 655 6453

Close to your EP school

Our centrally located school is walking distance to:

	Cafes and restaurants	1-5 minutes
	Grocery store	8 minutes
	Shopping	5-8 minutes
	Post office	1 minutes
	Bank/ATM	2 minutes
	Gym	3 minutes
	Subway	2 minutes
	Streetcars	2 minutes
	THE PATH	2 minutes
	Sports/Concert venues	15 minutes
	Harbourfront	15 minutes
	City Hall	12 minutes
	CN Tower	25 minutes

Services & facilities

EP and GBS Higher Education College, are part of Global Education Group. Together, our students share fantastic and modern university style facilities. At EP Toronto we have the following facilities:

Buildings: 1

Floors: 2

Total number of classrooms: 11

School facilities: Student lounge, self-study area, free Wi-Fi, elevator, street parking, modern & spacious classrooms with AC/heating.

Other services provided: Leisure programme, airport transfer, medical insurance.

Levels of English offered: All levels.

Reception: The friendly student services staff can direct you to the EP offices and classrooms. A Student Services Officer and an the Academic Manager will always be present to answer any questions you may have.



Your EP Toronto Welfare & Safeguarding Team

Do you have a question?

About personal, medical and your accommodation?



Ashafina Ashafara
Student Services Officer

About your class?



Susan Vilhena
Centre and Academic Manager



Emre Onomay
Student Services Assistant

To speak to a member of staff please call:

 **+1 437 655 6453**

Call us 24 hours per day, 7 days per week.

SAFETY, WELFARE AND SAFEGUARDING

First Aid

If you or another student has an accident or requires urgent medical attention, please come to the Main Office. If you are unable to walk, please contact us using the Emergency Phone.

Personal safety and looking after your valuables

Our campuses are safe, but please stay alert, particularly in tourist areas. Here's some advice to help you enjoy a safe and worry-free visit.

- Be alert when you are walking in crowded places.
- Do not walk with your phone in your hand if you are not using it.
- Place your valuables (such as phone and wallet) in inside pockets or in your bag.
- Avoid carrying large amounts of cash unless you know you need to pay for something.
- Do not leave your belongings unattended.

Fire safety

If you discover a fire: Press the fire alarm. Inform a staff member of the fire. Leave the building immediately and head to the courtyard at the back of the building.

If you hear the fire alarm: Leave the building immediately and head to the courtyard at the back of the building.

Do not run, and do not use the elevator. Stay with your teacher, and do not go back into the building until you are told to do so by an EP staff member.

Reporting Concerns or Abuse

If you ever feel unsafe, worried, or uncomfortable, whether because of another student, a staff member, or someone else, you should speak to a member of staff immediately.

You can talk to:

- Your Teacher or Activity Leader
- The Welfare Manager
- The Designated Safeguarding Lead (DSL)
- Our YLs Centre Manager

If you don't feel comfortable talking to someone in person, you can write a note and leave it with a staff member or use our welfare email: younglearners@englishpath.com.

We take all concerns seriously. We also have a whistleblowing policy, this means anyone can report unsafe or inappropriate behaviour, and it will be dealt with confidentially and professionally.

24/7 EMERGENCY PHONE NUMBER: +1 437 655 6453

Holidays

2026

1 Jan 2026

16 Feb 2026

3 Apr 2026

18 May 2026

1 Jul 2026

3 Aug 2026

7 Sep 2026

12 Oct 2026

25 Dec 2026

26 Dec 2026


28 Dec 2026

The school will be closed during the holidays. Please make sure to book your course/accommodation accordingly. Public Holidays are subject to change according to government announcements.

When the school is closed on a Monday, new students start on Tuesday.

Course days that fall on a public holiday are not reimbursed. The dates are observed as holidays in the year.

If you arrive on a week where the Monday is a holiday, your first day of school will be a Tuesday.

 **Need help?
Not satisfied?
Have a problem?**

At EP we believe that communication and an open-door policy is key to efficiently resolving any issue you might have. If you need help, are not satisfied with one of our services or you need advice, please talk to our staff at school. They will be able to help and assist quickly with any concerns you might have.

First day at school

Feature	Tuition Only	Day Camp	Full Experience
Accommodation	✗	✗	✓
Lunch Provided	✗	✓	✓
Airport Pickup	✗ Can be requested	✗ Can be requested	✓
Evening Activities	✗	✗	✓

Example Week for Full Experience Students

Activities are subject to change due to weather conditions, availability or any other unforeseen event.

Time	7:00 - 8:30	9:00 - 12:15	12:15 - 13:15	13:30 - 16:00	17:30 - 18:30	19:00 - 21:30	22:00	
Sunday	Arrival/Departure day / On Campus Activities							
Monday				3-Point Tour: City Hall ~ Toronto sign, Eaton's Centre, Dundas Square & Yonge Street		How much do you know about Toronto - Quiz Night		
Tuesday				Distillery District		Night walk		
Wednesday	Breakfast	LESSONS	Lunch	CN Tower	Dinner	Board Games	Good Night	
Thursday				Mackenzie House Museum		Night Walk		
Friday					Royal Ontario Museum		Graduation Ceremony & Celebration	
Saturday	Centre Island and beach							

Here's a detailed breakdown*

Tuition only - Timetable

Arrival	Morning Classes	Evening
08:30 Welcome, school tour and induction	09:00 - 10:30 Lesson 1 15:00 - 15:20 Break 10:45 - 12:15 Lesson 2	12:30 Student pick-up (by parents/guardians)

Day camp - Timetable

Arrival	Morning	Afternoon	Evening
Welcome, check-in, residence tour and induction	09:00 - 10:30 Lesson 1 15:00 - 15:20 Break 10:45 - 12:15 Lesson 2	14:00 - 17:30 Leisure Time	17:20 Student pick-up (by parents/guardians)

Full experience - Timetable

Arrival	Morning	Afternoon	Evening	Bed time
Welcome, check-in, induction	07:00 Breakfast 08:30 Lessons start	14:00 - 17:30 Leisure Time	18:30 Onwards Dinner and evening activities	22:00 Bed time

*Kindly confirm the exact timings and pick-up locations with the local teams.

About your course

Teaching methodology

At EP we use the communicative approach which means:

- A focus on speaking
- Interactive lessons
- Noticing students' gaps and reacting to them
- Going beyond the textbook
- English for real life outside the classroom
- Understanding each student's individual needs

All EP teachers are trained in this approach from their first day, so students have the same experience in all levels at all EP locations.

School material

Books: We use a range of age-appropriate teaching materials designed specifically for young learners.

Additional material used: Audio, Digital Presentation Material, Authentic Materials.

Students

Average Number of students per class: 15

Minimum age of students: Can vary

Average age of students: Can vary

Nationality mix: Can vary

Certificate of Attendance: you will receive a course Certificate of Attendance at the end of your course.

Extracurricular activities

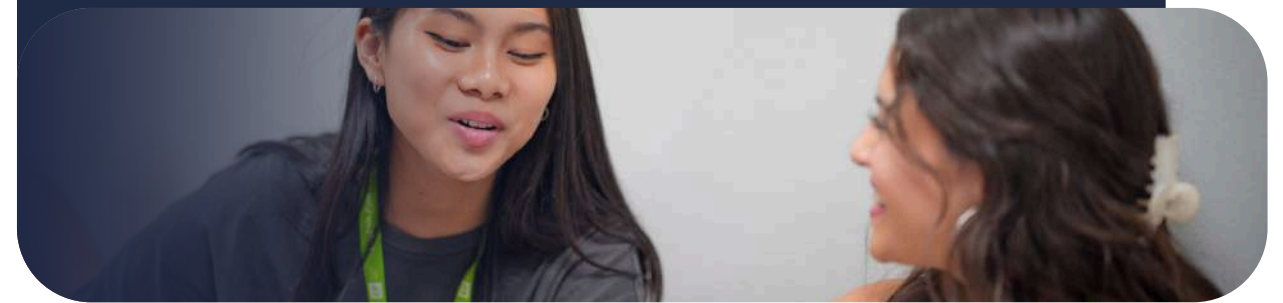
- Placement test to ensure accurate placing in levels
- Varied course materials
- Continuous progress monitoring

Library and Study area

There is a bright study area available for students, offering a great space to support your learning. You'll also find open spaces where you can work with classmates and access the internet.

How to

improve your language skills during or outside of your course



Study skills

Study Skills refer to the ability to frame and improve our learning. For example, what do we do when we learn a new word? Do we make notes? How? It's very important that we are organised in the way we learn, so that we have a much better chance of remembering the language and using it correctly in the future.

We would like to share with you some ways to keep learning and improving your English skills. If you practice these Study Skills, they will help you to continue your English language learning wherever you are.

Listening, Reading and Writing

What to listen to?

Try to listen to as many different types of spoken language as possible to improve your listening.

- Music and songs, TV shows, the news and films
- Speeches and interviews
- Audiobooks

What to write?

Think about the language you've learnt that week and try the following:

- Write an email to a friend/your teacher
- Write a diary/journal entry each day
- Write your shopping list in English

What to read?

There's so much you can read to practice your skills.

- Find an interesting article online?
- Choose a book you've read in your own language and get reading!
- Find an e-book and read on your daily commute to work or studies.

How to

practice vocabulary?



When you record vocabulary, you should also include longer phrases like:

phrasal verbs (e.g. get away with),
multi-word expressions (e.g. How's it going?),
idioms (e.g. raining cats and dogs),
and collocations (e.g. take a chance).

Quizlet 



Download the [Quizlet](#) app – create your own set of flashcards, practice and test yourself!

Cut strips of paper or use index cards. Using your Language Bank, write a word on one side and the translation or definition on the other. Lay the cards on a table and test yourself by placing either all the language sides or all the translations/definitions face down and checking your memory.

Create two cards for each word, one with the word, one with its translation. Spread all the cards on a table and play a game of Snap! Here's how:

- Make two cards for each word and its translation.
- Place all cards face down on a table.
- Turn over two cards at a time.
- If a word and its translation match, you have a Snap!
- Put matched cards aside and continue until all are matched.
- Try timing yourself to complete the game as quickly as possible.



Other useful websites for Learning and Practice

- [bbclearningenglish.com](#)
- [englishclub.com](#)
- [lyricstraining.com](#)
- [ted.com](#)
- [voscreen.com](#)

Exam Practice

- [flo-joe.com](#)
- [cambridge.org](#)
- [ieltspeaking.co.uk](#)
- [ieltsliz.com](#)

Grammar, Pronunciation and Vocabulary

- [bbclearningenglish.com](#)
- [englishclub.com](#)
- [lyricstraining.com](#)
- [ted.com](#)
- [voscreen.com](#)

Extra tip: Using a dictionary

Dictionaries are a useful resource for researching different meanings, collocations, examples of use and standard pronunciation. Use a mono-lingual dictionary and focus on understanding the meaning rather than translation of individual words. Translating individual words can often lead to misunderstandings.

A great, big paper mono-lingual dictionary is best but Cambridge, for example, have an online advanced learners' dictionary at www.dictionary.cambridge.org, which is easy to use and provides examples of word use.

Placement Test

At EP, we use the CEFR (Common European Framework of Reference for Languages) to place you in the most suitable class for your age & level.

Prior arrival you have to complete a placement test (grammar, writing, and speaking) so we can place you into the right group. You'll be in a class with students who are at a similar level, so you can feel confident and make progress.

<https://forms.gle/DZZqGqZ15GaYaar27>

During the course, your teachers and our academic team will check your progress. You'll also complete a mid-course feedback questionnaire to help us improve your learning experience.

At the end of your programme, you will receive an EP Certificate of Attendance, which includes:

- Your name and course dates
- Your CEFR level
- Your attendance record

Timetable

Your classes will vary throughout the week. Monday to Friday, you will have a 3-hour lesson per day.

During the rest of the week, you will take part in:

- Half day activities

On excursion days, you will be provided with a packed lunch, and you will return to campus in time for dinner. On other days, after your morning activities, you will go to school for lunch and some free time before your 3-hour evening class, which includes two short breaks.

After class, it's dinner time, followed by evening activities. You'll then return to your accommodation before curfew (10:00pm/22:00)

Please remember:

- Students must not leave the premises unaccompanied.
- Curfew times and all school rules must be respected at all times for your safety and that of others.

Take a look at your accommodation

Chestnut Residence

Nestled in downtown Toronto, Chestnut Residence offers a prime location surrounded by academic institutions, cultural attractions, and the city's bustling energy. Whether you're heading to class, exploring local galleries, or enjoying urban parks, everything is just steps away. It's the perfect base for students seeking both convenience and an enriching city experience.

- Free Wi-Fi access
- Supermarkets nearby
- Lounge Area
- Express check-in / check-out
- A Building Patroller or Special Constable services
- Themed floors
- Kitchen on each floor



Address:
89 Chestnut St, Toronto ON
M5G 1R1



About the residence

Accommodation Type:

Residence with Twin En-suite Room (two single beds with a private bathroom inside the room)

Cleaning:

Weekly house-keeping

Laundry:

One wash load per week (fee may apply)

Neighbourhood:

Stay in a welcoming student residence with comfortable rooms, dining, and outdoor spaces, close to public transport and city attractions.

Visitors/guests:

Guests are not allowed.

Noise:

Residents are required to respect all other residents and maintain a level of noise that does not disturb others. Quiet hours are 10pm-8am.

Smoking:

No smoking allowed.

Reception/security desk:

24-hour reception including security personnel.

Minimum stay

The minimum stay is 1-week.

Check In: After 3pm

Check Out: Before 9am

What's nearby

Dundas Subway Station:	7-minute walk	Hockey Hall of Fame:	17-minute walk
Eaton's Centre:	7-minute walk	Art Gallery of Ontario:	11-minute walk
City Hall:	3-minute walk	Harbourfront and ferry boats:	25-minute walk
CN Tower:	25-minute walk		
Ripley's Aquarium:	25-minute walk		
St. Lawrence Market:	20-minute walk		

Your room

Twin 



Recommendations

Checklist & other useful information

Here are a few important items that you should bring with you:

- Passport
- Acceptance letter
- Accommodation letter
- Proof of health/medical insurance
- Some cash and credit/debit cards
- Apple or Google Pay
- Weather appropriate clothing
- Adaptor for electrical appliances
- Prescription medication and medical records
- Emergency information
- Airport transfer
- Phone and charger(s)
- Toiletries

Clothing

Most students dress casually for classes, but you should bring nice clothes for going out and sportswear for sports and outdoor activities. The climate is changeable and maybe different from your own. The typical temperature is 25-30°C in the summer and 2 to 6°C in the winter, although it can drop below freezing. Bring waterproof clothing if you're arriving in the autumn or winter.

Electrical current

Standard voltage is 120 volts; remember to bring an adaptor with you or buy one when you arrive.

Arrival at the airport

When you land, connect to the airport Wi-Fi or use your mobile data to check for a welcome message from EP. Once you have collected your luggage and passed through security, look for a member of EP YL's staff wearing an EP YL's T-shirt or lanyard and holding an EP sign. You will be met at a clearly designated meeting point in the arrivals hall, where staff will welcome you and escort you safely to your residence.

When you arrive in Toronto

Arriving in a new country can be confusing. Read the information below about your arrival and don't hesitate to ask airport staff for help if needed.

EP YL transfers

If you book an airport transfer, please send your flight details at least 2 weeks in advance. Students should arrive at the airport on the Saturday or Sunday before their course starts.

For departure, EP YL's staff will escort you to the airport, assist with check-in, and stay with you until your flight leaves. They will also help if there are delays or issues. Students are contacted 40 minutes before departure to ensure everyone boards safely.

Transfer help

If your flight changes or you need transfer help, call the emergency numbers and give your name, school (EP YL's), and location. Only use greeters with official EP YL's signage.

Join the school's WhatsApp group for daily updates and any urgent notices, including school closures or delays.

Pocket money

While we cannot tell you exactly how much money to bring, please remember that all essential costs are already included in your programme: accommodation, meals, lessons, activities, visits and tours. Most students therefore only need money for personal expenses such as snacks, souvenirs, laundry, or any optional activities they choose to do in their free time.

Some students choose to give themselves a weekly budget of around \$250, which is usually enough to cover everyday expenses, laundry, local travel and small outings. You will need additional funds if you plan to take weekend trips or purchase higher-cost items.

We recommend bringing around \$100 in cash for your arrival and using a debit or credit card for the rest of your spending. Please check with your bank in advance to ensure your card will work in Canadian ATMs.

Do not bring foreign currency, and avoid carrying large amounts of cash for safety reasons.

Location and Travel

In EP Toronto, our YLs don't need public transport, we have private transfer to make your staying and commuting much more enjoyable. However, here you will find some information about walking distances.

Subway



English Path Toronto is located 2 blocks from King subway station.

Bus



Yonge St at Queen St East - Queen Station	5 minutes
Bay St at Queen St West	8 minutes

Walking distances



Metro	8 minutes
Rabba Maple Leaf Square	8 minutes
NOFRILLS Toronto	15 minutes

Living costs

(sample prices for items in this city)

- Bottle of water: \$2
 - Coffee: \$2
 - Can of coke: \$2 - 3
 - Meal out for two: \$60
 - Takeaway pizza: \$15
 - Sandwich: \$5
 - Local bus ticket: \$3.35
(depends on the distance)
-
- Local metro and tram ticket: \$3.35
 - Bike rental: \$15
 - Cinema ticket: \$13.50

Useful apps



Uber

Get a ride, order food and pay services



Transit Now

Real-time transit tracking and trip planning made simple.



Uber Eats

Have your favourite Toronto restaurant food delivered to your door with Uber Eats.



Google Maps

Navigate with confidence, discover nearby places, and get real-time directions right from your phone.

Staying Safe and Respectful in Toronto:

What you need to know

Local customs

Women in Canada are equal to men and should always be treated fairly.

Canadian people talk to strangers in public areas. This is a great way to practice English, but caution should be taken. You should not give out your address and telephone number, or accept inappropriate invitations.

“Please” and “thank you” are very important words! Always use them if you ask someone to do something for you, or if they help you or give you information. Say “sorry” or “excuse me” when you bump into someone. Upon entering a home, remove your shoes.

Canada is a culturally diverse nation where people of all ethnic backgrounds are treated equally.

People in North America leave a tip for good service in restaurants, hair salons and other places. The tip rate at most restaurants is about 15–20% of the bill and is not usually included. Fast-food is not tipped unless it is delivered. Porters in stations, airports and hotels should be tipped approximately \$1 per bag.

Laws

No one under the age of 19 in Ontario may buy or consume tobacco or alcohol, including beer and wine. It is against the law to buy tobacco or alcohol for someone you know who is under the age of 19.

Driving under the influence of alcohol is a very serious crime and police make regular random checks.

You will need international ID to enter bars, clubs or pubs (e.g. Passport, ID card, driving license).

Buying, selling and using drugs is illegal.

Student code of conduct

You must attend all classes. If you do not attend your classes your representative will be informed. If you do not then improve your attendance you may not be able to continue your course.

Be on time for all your lessons.

Always tell EP if you are going to be absent from school for any reason and tell your group leader if you are going away overnight.

If you commit a criminal offence or have to be severely disciplined you will be sent home. We will also inform the immigration authorities.

Be respectful, polite, and open to different

Toronto Traffic regulations

When having tours...

- Look at both sides of the road.
- When it is safe, go cross the road – do not run.
- Keep looking and listening for traffic while you cross.
- Look out for cyclists and motorcyclists travelling between lanes of traffic.
- Do not walk diagonally across the road.
- Everyone in a vehicle must wear a seat belt.

Medical Insurance

All students must have medical insurance for the duration of their stay in Canada. You can either book medical insurance offered by English Path or you can choose your own.

Accessing Healthcare in Toronto

If you get sick while in Canada you should visit a doctor. You can ask the student services team or your group leader where the nearest doctor is. If you have a minor illness you can ask staff at a local pharmacist for advice. Remember to bring any relevant insurance or medical documentation with you

Medical Costs

Medical costs are at the discretion of your local doctor or hospital. Minimum medical costs are as follows:

- Consultation with a doctor: \$75-100
- Prescriptions at a pharmacy: \$25 per item
- Dental treatment: \$150

Dental Care

There are many private dentists that charge for their services.

First Aid

If you or another student has an accident or needs urgent medical attention, please come to the Main or Student Services Offices where the assistance staff is located.

Prescription Medications

Remember to bring enough of your prescribed medication with you as Canadian pharmacists will not dispense a foreign prescription. International customs agents may ask you questions about your medication upon your departure or arrival, so be sure to pack it carefully. Bring any important medical records (blood type, prescriptions, x-rays) that might be useful for medical care abroad as well as contact information for your health care providers at home

Mental Health and Wellbeing

Mental health support for youth and young adult:
+1 800 668 6868

Youth crisis resources: **+1 855 242 3310**

Primary crisis hotline: **9 8 8**

Assaulted Women's Helpline:
TOLL-FREE: **+1 855 554 4325**
TOLL-FREE TTY: **+1 866 863 7868**
#SAFE (#7233) on your Bell, Rogers, Fido or Telus Mobile
24-hour telephone and TTY crisis line for all women in Ontario who have experienced any form of abuse.

Seniors Safety Line: **+1 866 299 1011**
Provided by Elder Abuse Ontario, the Seniors Safety Line provides contact and referral information for local agencies across the province that can assist in cases of elder abuse.

Emergency and First Aid

If you or someone else has a serious accident or needs immediate medical help:

- Call 911 for emergency services
- Inform the EP office or use the emergency phone – staff will assist you immediately
- Paramedics will provide an initial check and help determine further steps

Fire Safety

If you discover a fire, press the fire alarm button on the nearest alarm. Leave the building immediately via the fire exit. Make sure you tell a member of EP staff exactly what happened so they can call 911. If you hear the fire alarm, leave the building immediately. Do not run, use the lift or stop to collect your belongings. EP staff will guide you to the fire exit. Go to the assembly point. Follow any instructions given by a member of EP staff and do not go back into the building until you are told to do so by EP staff.

Personal Safety & Protecting Your Belongings

We strongly recommend you take out insurance for your personal belongings, especially cameras, music players, mobile phones and laptops. Personal items cannot be covered by EP homestay or residence insurance.

Toronto is generally a safe place but as with a lot of big cities, you should always be alert. Some tips are: be alert when you are walking alone at night. Avoid carrying large amounts of cash. Do not leave your belongings unattended. In Canada, you do not need to always carry your identification card or passport with you, you can keep it at home and carry a picture of your ID on your phone or a photocopy in your bag.

What you can expect from EP YL's

At EP YL's, we care about you. Your safeguarding and wellbeing are very important to us. We strive to ensure your stay is surrounded by a safe and stable environment so you can focus on enjoying your experience, learning, and growing.

Following norms and rules helps create a respectful and supportive atmosphere where everyone can thrive and get along.

At EP, our mission is to provide high-quality, motivating courses that help students:

Learn

We aim to help you improve your English skills to achieve your personal goals. That's why we employ excellent, experienced, and dynamic teachers who maintain high teaching standards.

Excel

We want all students to do their best. Our creative and challenging classes are designed to bring out your full potential. At the end of your course, you will receive a Certificate of Attendance showing your achieved level.

Grow

Language learning is a great way to build confidence and grow as a person. Experiencing other cultures helps broaden your horizons. Our lessons and activities are designed to support your personal development and help you flourish during your EP experience.

As part of your journey with EP, you will also receive:

- A friendly and efficient service from the Young Learners (YL's) Team to support you with any queries, problems, or questions.
- An initial placement test by the Academic Team to ensure you are placed at the right level.
- A modern, clean, safe, and well-lit environment to study in.
- An engaging activity programme with free and paid options, linked to your study programme to enhance your learning.
- Advice on further studies, such as exam classes, further or higher education.

What we expect from you

We cordially invite you to:

- Behave well at all times and everywhere you are.
- Respect all school rules and policies (available on our website).
- Follow local etiquette and cultural norms.
- Be punctual and attend all classes. 100% attendance is required for all Young Learner programmes.
- Speak the language at all times, practice makes perfect!
- Get to know and interact with your classmates. It's a great opportunity to make friends.
- Attend the school's induction presentation and read the student handbook, both contain important information to help you make the most of your stay.
- Keep Student Services informed of any changes in your personal circumstances, we care about your safety and wellbeing.
- Tell an EP YL's staff member if you are not feeling well, we need to keep the school updated about any absences.
- Refrain from eating or drinking (except water) in the classroom.
- Do not use your phone during class unless your teacher asks you to do so.

Respect and Responsibility

- Cyber or in-person bullying or harassment will not be tolerated under any circumstances.
- At EP YL's, we follow the Canadian values of democracy, the rule of law, individual liberty, and respect for other people's values and beliefs.
- Smoking is not allowed. It is also banned in all public indoor spaces in Canada.
- There are strict laws against illegal drugs. Penalties can be very serious, do not use or possess illegal substances during your stay.
- If you a minor, it is illegal to buy, attempt to buy, or consume alcohol, or for anyone else to buy it for you.

Students may be asked to leave their course early if they do not follow the Code of Conduct or EP's Disciplinary Policy.

Code of Conduct

General Behaviour

At EP YL's, we want everyone to enjoy their time, learn lots, and stay safe. To help make that happen, we ask you to follow the rules below. These rules are here to protect you and everyone around you. Students may be asked to leave their course early if they don't follow the code of conduct or EP's disciplinary policy.

- Be kind, polite and respectful to other students, staff, group leaders and members of the public.
- Treat others as you would like to be treated. Bullying, harassment (in person or online), and discrimination will not be tolerated.
- Respect everyone's culture, religion, background and identity. We all come from different places and that makes our school special.
- Follow all EP YL's rules and instructions from staff, they are here to keep you safe.

● If a student breaks the rules, they may receive a warning, be removed from activities or classes, and in serious cases, parents or guardians will be contacted and the student may be sent home.

In Class

- Speak English at all times, this helps everyone improve!
- Be on time and attend all your lessons. You must attend 100% of classes, this is part of our programme.
- Phones are not allowed in class, unless your teacher asks you to use it for learning.
- No food or drink in classrooms (except bottled water).
- Tell a staff member if you feel unwell and can't attend class.

Personal Conduct & Safety

- Follow laws: no smoking, no drinking alcohol, no drugs.
- If you are a minor, it is illegal to buy or drink alcohol or smoke.
- Drugs are strictly forbidden, this is a serious offence.
- Do not leave the school or residence without permission or a staff member.
- Respect curfews/supervision rules, these are there to protect you.

Digital Behaviour

- Use phones, laptops and the internet responsibly.
- Do not post hurtful or inappropriate content about others.
- If you see something that makes you uncomfortable, tell a staff member immediately.

Reporting Concerns

- If you are unhappy, feel unsafe, or see something wrong, talk to a staff member
- You can also email our confidential welfare support team at: younglearners@englishpath.com

Canadian Values

- Respect for the law
- Individual liberty and personal choice
- Equality and fairness
- Tolerance and respect for other cultures, beliefs and lifestyles

Life in Toronto

Leisure time



CN Tower

The CN Tower is one of Toronto's most iconic landmarks and one of the tallest structures in the world. Visitors can take high-speed elevators to a glass-floored observation deck and even try the EdgeWalk around the outside rim.



St. Lawrence Market

A beloved local gem, St. Lawrence Market is Toronto's historic food market, offering fresh produce, gourmet goods, and artisanal treats. It's a favorite stop for food lovers and curious travelers alike.



Casa Loma

Casa Loma is a majestic Gothic Revival-style mansion in midtown Toronto. With secret passageways, grand staircases, and sweeping city views, it feels like stepping into a real-life fairy tale.



Toronto Islands

Just a short ferry ride from downtown, the Toronto Islands offer beaches, bike trails, and peaceful green spaces with stunning skyline views—a perfect escape from the city bustle.

Life in Toronto

Cultural



Niagara Falls

Niagara Falls is a world-famous natural wonder on the border of Canada and the U.S. Visitors come to marvel at the massive, thundering waterfalls and take boat rides that get up close to the misty action.



Royal Ontario Museum

Canada's largest museum of world cultures and natural history. Its striking modern-meets-historic design houses everything from dinosaur fossils to ancient artifacts.



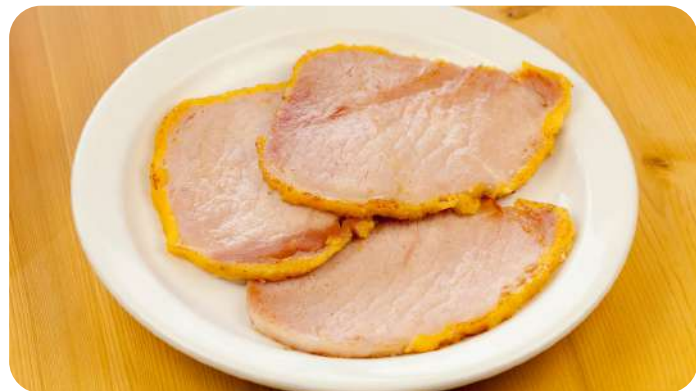
Hockey Hall of Fame

A must-visit for sports fans, the Hockey Hall of Fame celebrates Canada's national pastime with interactive exhibits, legendary memorabilia, and the iconic Stanley Cup.



Maple Syrup

A sweet Canadian staple made from the sap of maple trees, this golden syrup is perfect on pancakes, waffles, or even drizzled over snow.



Peameal Bacon

Also known as “Canadian bacon,” this lean, juicy pork loin is rolled in cornmeal and typically sliced thick and grilled—often served on a bun at Toronto’s markets.



Butter Tarts

A beloved Canadian dessert, butter tarts have a flaky pastry shell filled with a gooey mix of butter, sugar, and egg—sometimes with raisins or pecans.



Date Square

A cozy, old-fashioned treat made with sweet date filling sandwiched between layers of crumbly oat crust—perfect with a cup of tea or coffee.



Distillery District

A beautifully preserved historic district featuring cobblestone streets, Victorian industrial buildings, and a vibrant mix of boutique shops, art galleries, and cozy cafés. It’s a lively spot perfect for exploring culture, dining, and unique events year-round.



Rosedale

One of Toronto’s most prestigious neighbourhoods, known for its grand historic homes, winding, tree-lined streets, and lush green spaces. It offers a peaceful, upscale retreat just minutes from downtown’s hustle and bustle.



Cabbagetown

A charming neighborhood famous for its colorful Victorian-era houses, quiet streets, and welcoming community vibe. It combines rich history with trendy cafés, parks, and local shops, making it a favorite among locals and visitors alike.

Leisure and Supervision

Our Young Learners programmes include a full timetable of exciting cultural, educational, and social activities to help you enjoy the best of city life while making friends and practising your language in real-world settings.

Activities include sightseeing tours, cultural visits, sports, themed evenings, and excursions to iconic destinations such as museums and parks.

Weekly Activity Schedule

A weekly activity schedule is shared at the centre, during induction and a reminder is shared the day before of the agenda for next day. Please note:

- All activities are mandatory unless otherwise advised for specific reasons (e.g. illness).
- The programme has been carefully designed to balance learning, fun, and student welfare.

Supervision & Ratios

Student safety is our top priority. Supervision is provided at all times by trained staff:

- 1:20 ratio for students aged 13+
- 1:15 ratio for students aged 8–12

Staff roles are clearly allocated for each excursion, including first aiders, group leaders, and designated meeting points. Extra care is taken during transport, high-traffic areas, and late returns.

Before Every Excursion

Before any outing, you'll attend a compulsory safety briefing which covers:

- The destination and cultural context
- Emergency contact information
- How to stay safe and what to do if separated
- The name and phone number of your lead staff member

Free Time – Supervised Independence

During some city visits, short periods of free time are allowed in clearly defined areas.

You'll be asked to:

- Remain in small groups
- Share your live location with EP staff via mobile phone
- Check in at set times and return to the meeting point punctually

This helps you enjoy some independence while ensuring staff can support you at all times.

Support for Parents

At EP, we understand how important it is for parents to feel informed and reassured while their child is studying abroad. We are committed to clear and responsible communication.

Communication Protocol

In most cases, all communication with families will be made via the partner agent through whom the booking was arranged. This includes updates on:

- Attendance or unexplained absences
- Illness or medical concerns
- Behavioural or safeguarding issues


In the rare event of a serious emergency or where immediate contact is required, we may contact parents/guardians directly if it is deemed necessary for the child's safety or wellbeing.

Staying in Touch

- Students are encouraged to stay in regular contact with families
- Wi-Fi is available in both the residences and the teaching centre
- Phone or video calls can be made during free time, especially in the evenings

24/7 Emergency Support

We operate a 24-hour emergency contact number for urgent situations. This number will be shared before arrival and is available to agents and families.

 Please only use this number for genuine emergencies, as it may be needed to support a student in immediate need.

We are here to safeguard your child's experience and wellbeing at all times.

A Final Note

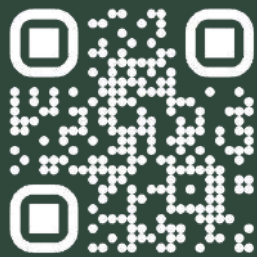
We are happy to welcome you to EP Young Learners. Let us begin our journey together filled with new discoveries and experiences.

It's your attitude that helps us do great things in different ways. You inspire us to keep improving, and it's your enthusiasm that drives us to do our best.

Let's encounter new possibilities, embrace learning, and create memories for life.

Let's enjoy the ride together!

#memoriesforlife



@englishpathschools

36 Victoria St, Toronto, ON M5C 1H3, Canada



All Young Learners centres

EP Greenford

891 Greenford Road, Greenford
UB6 0HE

EP Middlesex

The Burroughs, London NW4 4BT

EP Dublin

Clarinda Park North, Dun
Laoghaire Co. Dublin Ireland
Summer School: UCD, Belfield,
Dublin 4, Ireland

EP Paris

98 Rue Didot, 75014 Paris, France

EP Malta

West Block Marguerite
Mangion Street St.
Julian's Malta STJ 3180
Summer School: WFFF+RH3, Sir
L. Prezios, Pembroke, Malta

EP Dubai

EP Block 3, Dubai Knowledge
Park, Al Sufouh 2, Dubai, United
Arab Emirates

EP Riyadh (locals only)

.Gernaata Square QPRR+3F8
عراش رفعجوبا روصنملا,
Riyadh 13241, Saudi Arabia

EP Toronto

36 Victoria St, Toronto, ON M5C
1H3, Canada

EP Brisbane

Level 3/4 115 Queen Street
Brisbane, Queensland 4000,
Australia