



Young  
Learners

2025 - 2026

Dublin

# Student Handbook





# Contents

About Dublin	1
About the school	3
Welfare and Safeguarding team	5
Holidays	6
First day at school	7
About your course	9
How to practice	10
Accommodation	13
Recommendations	16
Location and travel	18
Living cost	19
Stay safe and respectful	20
What you can expect from EP	22
What we expect from you	23
Life in Dublin	24



We’re so excited to have you with us. Whether you’re here for a short stay or a longer journey, you’re now part of a vibrant, supportive community across amazing cities like London, Dubai, and Malta. Our team is here to help you learn, grow, and make unforgettable memories. If you need anything, just reach out—we’re always happy to help.

**Enjoy the journey, and  
welcome to the EP family!**



# About Dublin

Dublin is a fantastic option for those looking to improve their English while immersing themselves in vibrant Irish culture and stunning landscapes. This charming city, nestled between mountains and the sea, offers a serene and scenic escape. Exploring Dublin on foot allows you to soak in its youthful and lively vibe. Don't miss out on iconic sites like Trinity College and St. Patrick's Cathedral, as they are essential to the experience. With English Path, you can easily enhance your language skills in one of the best cities for learning.



## Famous landmarks

Trinity College, St Patrick's Cathedral, Ha'penny Bridge, Dublin Castle, Guinness Storehouse, Phoenix Park, Howth Peninsula.

## City personality

Cultural, creative, friendly, vibrant, youthful, bike-friendly, academic, green

## What makes this city unique?

Dublin is incredibly picturesque. It's a medieval city that has some fascinating living history along its streets – ancient buildings, historical sites, street art, memorials and a different story at every turn. Dublin was voted as Best Weekend Destination in the World in 2023.

## Transport within a 15-minute walk

Train, bus.

## Cuisines within a 15-minute walk

Indian, Italian, Irish, European, Greek, Seafood, Japanese, Mexican, Thai, Vegetarian.

## Alternative things to do

Go hiking in the Wicklow mountains, explore Dublin's art galleries and go horse riding.

## 5 Reasons to choose this city

- 1 Ireland's capital city and the cultural, educational and industrial centre of the island.
- 2 Dublin is one of the greenest cities on the planet.
- 3 The nearby mountains and sea offer a peaceful getaway from bustling city life.
- 4 Excellent amenities, a thriving social scene, and a cosmopolitan atmosphere.
- 5 Prestigious universities nearby and safe environment.





# Why choose to study in our EP Dublin School?

- Located in a beautiful seaside town near Dublin city centre.
- Great mix of nationalities in the school.
- Minutes from train station and bus stops.
- Great Social Programme with activities and excursions in and around Dublin.\*
- Experienced customer service & academic team.

\* Additional weekend excursions are offered during summer



Find us on Google maps

📍 1 Clarinda Park N, Dún Laoghaire, Dublin, A96 H5X6 .









At this address since: 2023

☎ Landline: +353 1 230 1100  
Emergency: +353 85 130 4200



## Close to your EP school

Our centrally located school is walking distance to:

	<b>Cafes with restaurants</b>	1-5 minutes
	<b>Supermarket</b>	3 minutes
	<b>Post office</b>	1 minute
	<b>Bank/ATM</b>	3 minutes
	<b>Gym</b>	5 minutes
	<b>Train station</b>	2 minutes
	<b>Harbour front</b>	2 minutes
	<b>Park</b>	1 minutes



## Staff



**Romina Borderas**

Global Head of Young Learners



Meet the team

**Languages spoken by staff:** English, Spanish, Portuguese, Russian, German, Italian, French, Irish.

## Services & facilities

English Path and GBS Higher Education College, are part of Global Education Group. Together, our students share fantastic and modern university style facilities. At EP Dulin we have the following facilities:

**Buildings:** 2  
**Floors:** 3  
**Total number of classrooms:** 12

**School facilities:** Student lounge, self-study area, Wi-Fi (free), street parking, modern & spacious classrooms with smart TVs, heating.

**Other services provided:** Social activity programme, airport transfer, medical insurance.

**Levels of English offered:** All levels.

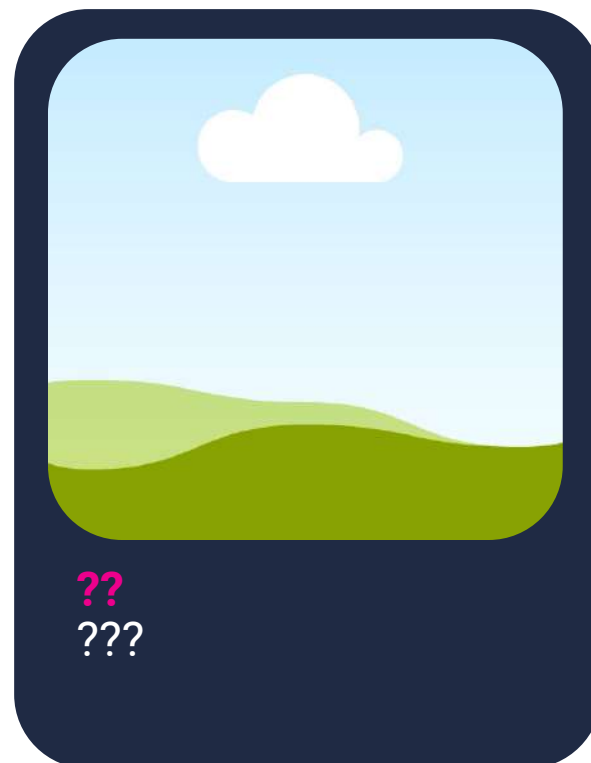
**Reception:** The friendly Student Services staff can direct you to the EP offices and classrooms. A Student Services Officer and Director of Studies will always be present to answer any questions you may have.



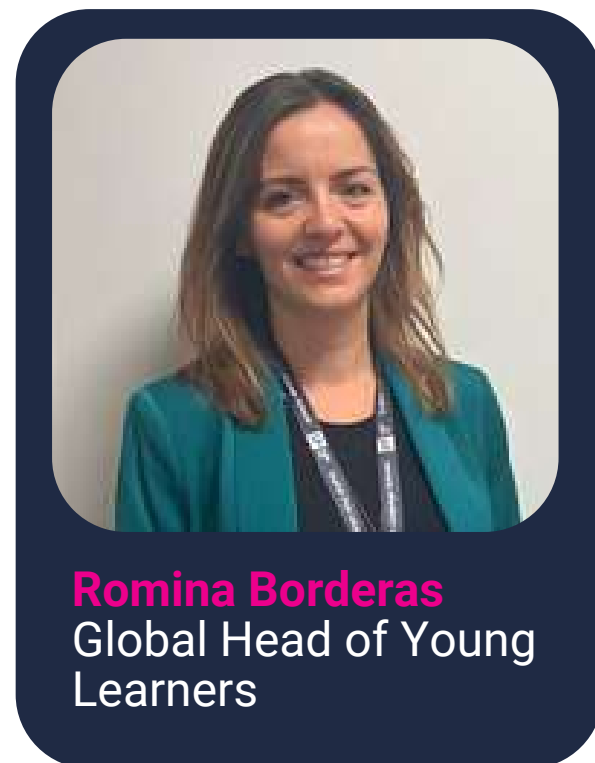
# Your **EP Dublin** Welfare & Safeguarding Team

Do you have a question?

About your class?



About personal, medical or about your accommodation?



To speak to a member of staff please call:

 **+353 89 202 9698**

Call us 24 hours per day, 7 days per week.

# School holidays & **Dublin** public holidays

**2025 - 2026**

27 Oct 2025

22 - 26 Dec 2025

01 Jan 2026

02 Feb 2026

17 Mar 2026

06 Apr 2026

04 May 2026

01 Jun 2026

03 Aug 2026

26 Oct 2026


25 Dec - 01 Jan 2026

The school will be closed during the holidays. Please make sure to book your course/accommodation accordingly. Public Holidays are subject to change according to government announcements.

**When the school is closed on a Monday, new students start on Tuesday.**

Course days that fall on a public holiday are not reimbursed. The above dates are observed as holidays in the year.

If you arrive on a week where the Monday is a holiday, your first day of school will be a Tuesday.

 **Need help?**  
**Not satisfied?**  
**Have a problem?**

At EP we believe that communication and an open-door policy is key to efficiently resolving any issue you might have. If you need help, are not satisfied with one of our services or you need advice, please talk to our staff at school. They will be able to help and assist quickly with any concerns you might have.

# First day at school



Click here and take the placement test

Feature	Tuition Only	Day Camp	Full Experience
Accommodation	✗	✗	✓
Lunch Provided	✗	✓	✓
Airport Pickup	✗ Can be requested	✓	✓
Evening Activities	✗	✗	✓

## Example Week for Full Experience Students

	7:30 - 8:30	09:00 - 13:00			13:30	14:00 - 17:40	19:00	20:00 - 21:30	22:00
Sun 30.06.24	Arrival Day						Dinner	On-Campus Activities I Departures I Arrivals	Good Night
Mon	Breakfast	Visit to the Thyssen-Bornemisza National Museum.			Lunch	Classes		Hawaiian Mixer	
Tue		Walk through the Manzanares Linear Park.	Bike route through the Madrid Río.	Bike route through the Madrid Río.				Afternoon of sports and games in the Retiro Park.	
Wed		EP Sports, EP Workshop, EP Academy						Karaoke Night	
Thu		Tour of the Royal Palace.						Board game and karaoke night.	
Fri		Excursion to Faunia Nature Park.	Madrid Amusement Park.					Graduation & Sunset at the beach	
Sat		09:00 - 15:00						19:00	
		Shopping and exploration day at the Mercado de San Miguel.			Excursion to the Botanical Garden.	Excursion to the Botanical Garden.	Dinner	Pool Games	

# Here's a detailed breakdown

## Tuition only - Timetable



### Arrival - Monday

08:30 Welcome, school tour and induction



### Afternoon Classes

15:00 - 16:00 Lesson 1  
16:00 - 16:20 Break  
16:20 - 17:20 Lesson 2  
17:20 - 17:40 Break  
17:40 - 18:40 Lesson 3



### Evening

18:30 Student pick-up (by parents/guardians)

## Day camp - Timetable



### Arrival

Welcome, check-in, residence tour and induction



### Monday Morning

08:30 Leisure time and meet the team



### Afternoon

13:30 Lunch  
15:00 Lessons start



### Evening

18:00 Student pick-up (by parents/guardians)

## Full experience - Timetable



### Arrival

Welcome, check-in, induction



### Morning

07:30 Breakfast  
09:00 Leisure time



### Afternoon

13:30 Lunch  
15:00 Lessons start



### Evening

18:45 Dinner and evening activities



### Bed time

22:00 Bed time

# About your course

## Teaching methodology

At English Path we use the communicative approach which means:

- A focus on speaking
- Interactive lessons
- Noticing students' gaps and reacting to them
- Going beyond the textbook
- English for real life outside the classroom
- Understanding each student's individual needs

All EP teachers are trained in this approach from their first day, so students have the same experience in all levels at all EP locations. Take a look at our graduation ceremony



## School material

**Books:** English File 4th Edition, Cutting Edge 3rd Edition, Empower 2nd Edition.

**Additional material used:** Audio, digital presentation material, authentic materials.

## Students

**Average Number of students per class:** 12

**Average age of students\*:** 27

**Nationality mix\*:** Brazil, Colombia, Turkey, Mexico, Paraguay South Korea, Mongolia.

\*As per 2023 stats. Nationality mix and age varies. Dependent on the time of year.

**End of course certificate:** you will receive a course certificate at the end of your course.

## Extracurricular activities

- Placement test to ensure accurate placing in levels
- Varied and interesting course material
- Continuous progress monitoring
- Project with final presentation

## Library and Study area

There is a bright Library/ Study-Centre available for students which is a great opportunity to help you get more out of your studies. There are open areas where you can work with your classmates and access the internet.

Why not borrowing a book and watch yourself improve as you're able to move up through the understanding of content!

## How to

### improve your language skills during or outside of your course

At English Path, learning English is fun! Let's have a look at the following tips to make sure you get the most out of your experience.

## Study skills

Study Skills refer to the ability to frame and improve our learning. For example, what do we do when we learn a new word? Do we make notes? How? It's very important that we are organised in the way we learn, so that we have a much better chance of remembering the language and using it correctly in the future.

We would like to share with you some ways to keep learning and improving your English skills. If you practice these Study Skills, they will help you to continue your English language learning wherever you are.

## Listening, Reading and Writing

### What to listen to?

Try to listen to as many different types of spoken English as possible to improve your listening.

You can find lots on the internet:

- Music and songs TV shows, the news and films
- Speeches and interviews
- Audiobooks

### What to write?

Getting the new language you've learnt down on paper, can really help to consolidate your learning.

Think about the language you've learnt that week and try the following:

- write an email to a friend/your teacher
- write a diary/journal entry each day
- write your shopping list in English

### What to read?

There's so much you can read to practice your skills, it doesn't have to be a book. You can read signs, newspapers, the back of food packets!

- Why don't you find an interesting article online?
- Choose a book you've read in your own language and get reading!
- Find an e-book and read on your daily commute to work or studies. This site has lots of free ones: [gutenberg.org](http://gutenberg.org)



## How to

### practice vocabulary?



When you record vocabulary, you should also include longer phrases like:

phrasal verbs (e.g. get away with),  
multi-word expressions (e.g. How's it going?),  
idioms (e.g. raining cats and dogs),  
and collocations (e.g. take a chance).

Quizlet



Download the **Quizlet** app – create your own set of flashcards, practice and test yourself!

Cut out lots of strips of paper or use index cards. Use the Language Bank you have made and write a word on one side of each strip, with the translation or definition on the other side. Now you can place your cards on a table and test yourself by placing either all the English sides, or all the translations/definitions, face down and test your memory.

Make two cards with the English word and its translation on different cards. Put all these cards on a table and play a game of Snap! Here's how:

- Place all of the cards face down.
- Take one card and place it face up.
- Take another card and place it face up.
- If the two cards are the English word and its translation - you have Snap! Place the two cards at the side of the table and continue until you have matched all the cards.
- Try timing yourself and completing the game as quickly as possible.

## Other useful websites for Learning and Practice

- [bbclearningenglish.com](https://www.bbclearningenglish.com)
- [englishclub.com](https://www.englishclub.com)
- [lyricstraining.com](https://www.lyricstraining.com)
- [ted.com](https://www.ted.com)
- [voscreen.com](https://www.voscreen.com)

## Exam Practice

- [flo-joe.com](https://www.flo-joe.com)
- [cambridge.org](https://www.cambridge.org)
- [ieltsspeaking.co.uk](https://www.ieltsspeaking.co.uk)
- [ieltsliz.com](https://www.ieltsliz.com)

## Grammar, Pronunciation and Vocabulary

- [bbclearningenglish.com](https://www.bbclearningenglish.com)
- [englishclub.com](https://www.englishclub.com)
- [lyricstraining.com](https://www.lyricstraining.com)
- [ted.com](https://www.ted.com)
- [voscreen.com](https://www.voscreen.com)

## Extra tip: Using a dictionary

Dictionaries are a useful resource for researching different meanings, collocations, examples of use and standard pronunciation. Use a mono-lingual dictional and focus on understanding the meaning rather than translation of individual words. Translating individual words can often lead to misunderstandings.

A great, big paper mono-lingual dictionary is best but Cambridge, for example, have an online advanced learners' dictionary at [www.dictionary.cambridge.org](https://www.dictionary.cambridge.org), which is easy to use and provides examples of word use.

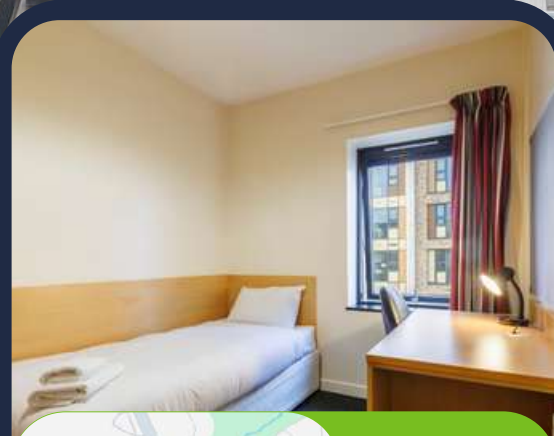


# Take a look at your accommodation

## University College Dublin

Stay in a comfortable and secure accommodation just minutes from University College Dublin. Enjoy bright, cozy rooms and plenty of shared spaces to relax and connect with others. With easy access to campus and Dublin's lively neighborhoods, this is the perfect place to feel at home while exploring the city. Experience convenience, comfort, and a welcoming community all in one spot!

- WiFi
- Express laundry / dry clean service
- On-site mini mart
- Housekeeping turndown service
- 24-hour security personnel
- Four on-site restaurants
- Bicycle rentals and parking are available on-site
- A garden, picnic area, and outdoor furniture provide spaces to relax



**Address:**  
University College Dublin,  
Belfield, Dublin 4, Ireland

## Your room

Single

Apartment

- Bright and modern rooms designed for comfort and convenience.
- Thoughtfully furnished with everything you need to feel at home.

- En-suite bathrooms for added comfort and privacy.
- Fresh, uncluttered design to help you relax, focus, and feel at home.



## About the residence

### Accommodation types:

Single rooms or apartments (max. 4 students).

### Bedrooms:

The apartments contain the following: bed, desk, mini-fridge, electric kettle.

### Bathroom:

Private bathroom.

### Kitchen:

The kitchen is fully equipped and includes cooking facilities and space to store food in the fridge/ freezer and cupboards. Cutlery/ crockery included.

### Additional costs:

Mandatory €735 refundable deposit. Utilities are about €65.32, which covers electricity, heating and water. There may be additional charges for parking.

### Neighbourhood:

A 10-minute walk from medical facilities and a gym.

### Visitors/guests:

Overnight guests are allowed and must be registered.

### Noise:

Residents should be conscious of the noise they are making at all times both whilst entering and leaving the building, and within their own apartment. If noise can be heard from outside an apartment it is too loud.

### Smoking:

All facilities and residents' rooms are non-smoking.

### Reception/security desk:

24-hour reception including security personnel.

### Cleaning service:

Rooms are cleaned before check-in.

### Beddings/towels:

Not provided.

### Minimum stay

1 week minimum stay. Students can book weekly. The minimum stay is 1-week.

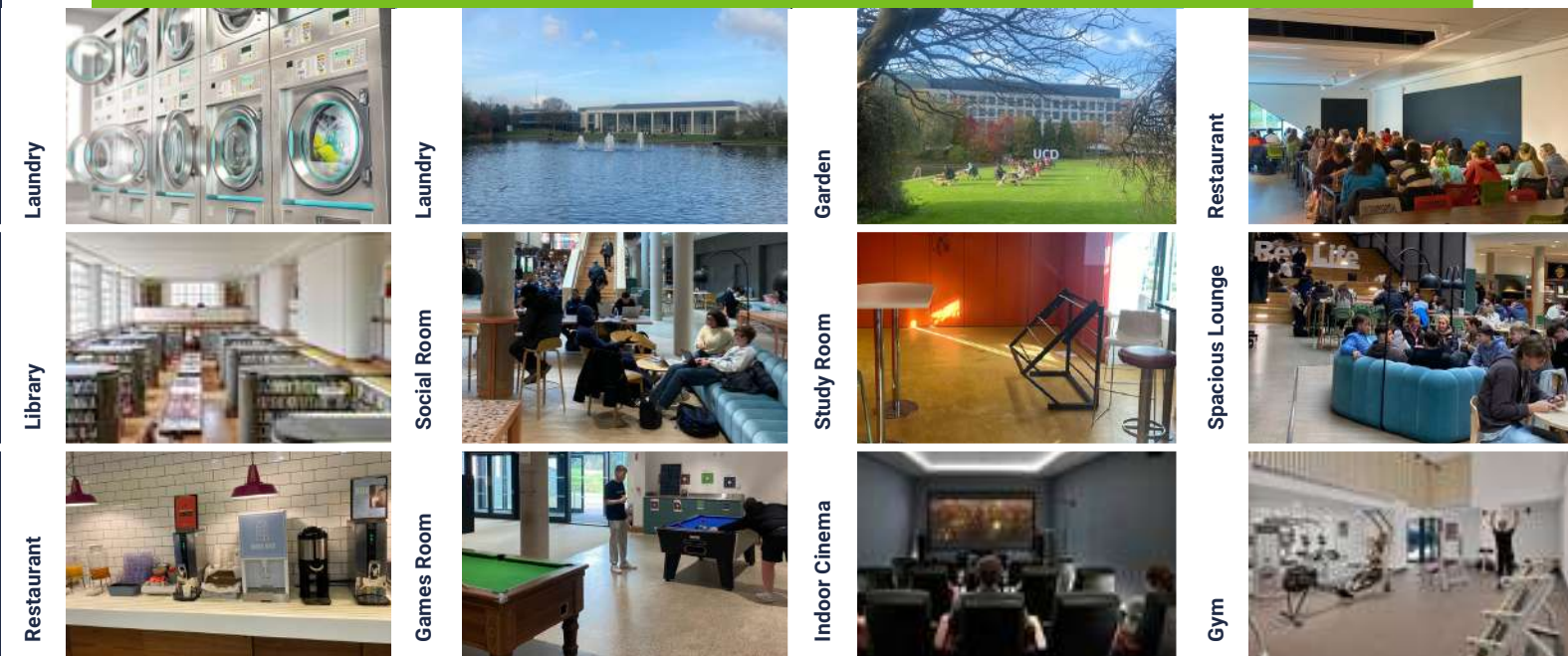
### Check-in/check-out

Check-in from 4pm/check-out by 11am.

### Accommodation location:

**Bus stop:** 240 m away  
**Dublin Castle:** 6 km away  
**Phoenix Park:** 7.9 km away  
**EPIC The Irish Emigration Museum:** 6 km away  
**The Howth Cliffs:** 22 km away

**Dublin airport:** 16 km away  
**Merrion Strand:** 3 km away  
**Dublinia:** 6 km away  
**Games of Thrones Studio:** 132 km away  
**EP Dublin campus:** 8 km away



UCD student accommodation gives you more than just a room. It's your home away from home, right on a leafy campus close to the heart of Dublin. You'll find comfy rooms, great shared spaces, and everything you need right on your doorstep. Settle in, feel good, and enjoy the full student experience.



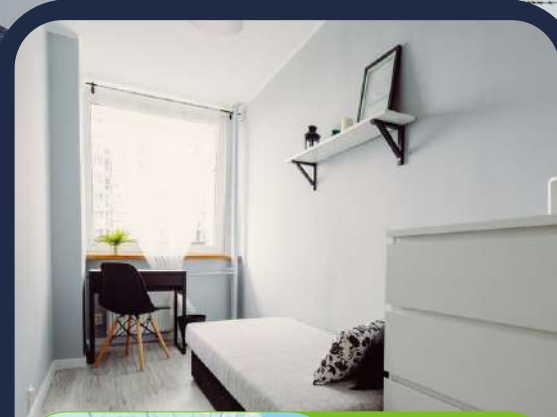
# Take a look at your accommodation

(closed groups)

## Homestay

Experience Dublin like a local by staying with a friendly family just minutes from our EP Dublin school. Enjoy a safe, comfortable home with delicious home-cooked meals and the chance to practice your English every day. It's the perfect way to dive into Irish culture while feeling right at home, and all in a super convenient location!

- The average commute is between 15 and 60 minutes by public transportation.
- Live in the home of a local resident.
- Comfortable, safe environment with meals prepared for you.
- Opportunity to practice English with your host.



**Address:**  
South Dublin

## Your room

Full-board



Half-board



- 3 meals per day (breakfast, packed lunch, dinner) from Monday to Sunday.
- 21 meals per week.

- 2 meals per day (breakfast, dinner) from Monday to Sunday.
- 14 meals per week



## Things students need to bring

Toiletries, personal items to make student's room feel at home, prescription medication, SIM card, a small gift for the host family (not required).

## Meals provided

Yes (depends on booking type, please refer to the table at the top of the page).

**Breakfast:** Breakfast is usually a light meal consisting of cereal, fruit, toast, juice, or coffee. Hosts will usually ask you to prepare your own breakfast.

**Lunch:** If full-board: Your host family will prepare a packed lunch for you, which usually consists of a sandwich, fruit or sweets and a drink.

**Otherwise:** You will be responsible for buying your own lunch at school, from a local restaurant, or the local shops.

**Dinner:** You will usually eat dinner with your host, or occasionally you may prepare your own meal with food supplied by your host.

## Services included

Bed linen, towels, telephone use for emergencies, students need to make sure to discuss laundry with their host family after you arrive as laundry facilities will depend on your individual homestay.

**Extra cost of services:** No

## Will the homestay arrange to pick up the student from the airport?

No. However you can book your airport transfer with your EP school. The transfer to your accommodation will then be organised accordingly.

## Transport to school

Your host will help you to find your way to and from school on your first day and will show you how to use public transport.



At EP Dublin, you'll stay with a friendly local family who makes you feel like part of the home. Share delicious meals, good conversation, and everyday Irish life in a safe, comfortable space. It's a real local experience, not just a place to sleep.





# Recommendations

## Checklist & other useful information

Here are a few important items that you should bring with you:

- Passport.
- Acceptance letter.
- Accommodation letter.
- Proof of health/medical insurance.
- A bit of cash and credit/debit cards/ Apple or Google Pay.
- Weather-appropriate clothing (depending on the season you come to Dublin).
- Adaptor for electrical appliances.
- Prescription medication and medical records.
- Emergency information.

## Before you leave your country

Here are some important things you need to know to make your arrival as smooth as possible. Use our checklist to ensure you don't forget anything and are prepared for the exciting times ahead.

## Pocket money

Recommend weekly budget: €250. This should cover expenses, local travel and activities. You will need additional money if you want to take weekend trips. Bring €100 with you in cash and a debit or credit card. You will need to check with your financial institution to make sure you will be able to withdraw money from an Irish ATM. Do not bring foreign currency. It is not wise to carry around large amounts of cash.

## Clothing

Most students dress casually for classes, but you should bring nice clothes for going out and sportswear for sports and outdoor activities. The climate is changeable and maybe different from your own. The typical temperature is 15-20°C in the summer and 0-10°C in the winter, although it can drop below freezing. Bring waterproof clothing if you're arriving in the autumn or winter.

## Electrical current

Standard voltage in Ireland is 230 volts; remember to bring an adaptor with you or buy one when you arrive. Ireland uses the same sockets as the UK.

## School notifications

We encourage you to join the social programme WhatsApp group when you arrive and stay active in the group during your stay. This will give you an idea of what is happening at the school and help you connect with staff and students. This is also where we will post notification of any unexpected holidays. It is important you check our social program WhatsApp group for any messages while you are attending the school. If we have some important information to share with you, we will post a message as soon as possible.



# When you arrive in Dublin

Arriving at the airport in a foreign country can be overwhelming. To better prepare yourself, make sure that you have read the information below about your arrival and how to get to your accommodation. If you get lost or confused upon arrival, don't be afraid to ask the airport staff for help as they will be happy to give assistance.

## EP transfers

Students should arrive at Dublin Airport. We request that you book your flights according to the starting date of your specific program. You must arrive on the Saturday or Sunday prior to your course start date. If you have booked a transfer service, a driver will meet you outside the customs area and drive you to your homestay or residence. Please ensure you arrange and pay the transfer fee in advance.

## Transfer service emergency contact details

If you have any flight changes, miss a connecting flight or need help meeting the transfer service, you should call one of the following emergency numbers. Please be prepared to tell them your name, school name (English Path) and location. Students should only accept a transfer from a greeter with the official English Path signage.

## Transfer service emergency numbers:

**+353 1 531 0255**

## Independent transfers

**Taxi Service cost:** €80-100

**Journey time:** 45 minutes

depending on location of homestay/ residence

## Bus

**Line or number:** Bus16 or Bus 41

**Cost** €8

**Duration** 60 minutes  
(to the City Center)



# Location and Travel

Use Google Maps to plan your journey. When you zoom in on the map, you'll see transit stop icons. Click on the icons to see all the transit lines there.

## Bus & Train Stations



Sandycove Station	5 minutes
Dun Laoghairet Station	11 minutes
Monkstown Crescent	25 minute

## Train



**Irish Rail**  
The station also connects to the Irish Rail network, allowing easy travel to destinations like Connolly, Heuston, and Tara Street.

## Links



From Dun Laoghairet Station to:	
Dublin castle	12 stops
National Museum of Ireland	14 stops

## Walking distances




SuperValu Dun Laoghaire	6 minutes
Tesco Superstore	10 minutes
Centra	7 minutes

# Living costs


(sample prices for items in this city)

- Bottle of water: €2
- Coffee: €4
- Can of coke: €1
- Meal out for two: €60
- Takeaway pizza: €15
- Sandwich: €6
- Local bus ticket: €2
- Local bus ticket: (depends on the distance)
- Cinema ticket: €16


## Useful apps




**Uber**  
Uber is a popular ride-sharing service that provides convenient and on-demand transportation through a mobile app.



**Bolt**  
Fast and affordable rides.



**Visit Dublin**  
Official tourism information website.



**Uber Eats**  
Have your favourite Dublin restaurant food delivered to your door with Uber Eats.



# Staying Safe and Respectful in Dublin:

## What you need to know

### Local customs

Women in Ireland are equal to men and should always be treated fairly.

Irish people talk to strangers in public areas. This is a great way to practice English, but caution should be taken. You should not give out your address and telephone number or accept inappropriate invitations.

“Please” and “thank you” are very important words! Always use them if you ask someone to do something for you, or if they help you or give you information.

Ireland is a culturally diverse nation where people of all ethnic backgrounds are treated equally.

### Laws

No one under the age of 18 in Ireland may buy or consume tobacco or alcohol, including beer and wine. It is against the law to buy tobacco or alcohol for someone you know who is under the age of 18.

Driving under the influence of alcohol is a very serious crime and police make regular random checks.

You will need international ID to enter bars, clubs or pubs (e.g. Passport, ID card, driving license).

Buying, selling and using drugs is illegal. .

### Student code of conduct

You must attend all classes. If you do not attend your classes your representative will be informed. If you do not then improve your attendance you may not be able to continue your course. 85% attendance is needed to be able to receive a certificate of completion.

Be on time for all your lessons.

Always tell English Path if you are going to be absent from school for any reason and tell your host family if you are going away overnight.

If you commit a criminal offence or have to be severely disciplined you will be sent home. We will also inform the immigration authorities.

Be respectful, polite and open to different cultures.

### Dublin Traffic regulations

When having tours:

- Look at both sides of the road.
- When it is safe, go cross the road – do not run.
- Keep looking and listening for traffic while you cross.
- Look out for cyclists and motorcyclists travelling between lanes of traffic.
- Do not walk diagonally across the road.
- Everyone in a vehicle must wear a seat belt.

### Medical Insurance

All students must have medical insurance for the duration of their stay in Ireland. They can either book medical insurance offered by English Path or they can choose their own. It must be booked with an Irish insurance company.

### Health and safety

**If you get sick:** If you get sick while in Ireland you should visit a doctor. You can ask the Student Services team or your host family where the nearest doctor is. If you have a minor illness, you can ask staff at a local pharmacist for advice. Remember to bring any relevant insurance or medical documentation with you.

**Staying safe at school:** If you or another student has an accident or needs urgent medical attention, please come to reception where the First Aider is located.

### Medical Costs (Approximate)

Medical costs are at the discretion of your local doctor or hospital. Minimum medical costs are as follows:

- Consultation with a doctor: €40-70
- Prescriptions at a chemist: €15 per item
- Dental treatment: €150
- Eye test or new glasses: €60-100

### Dental Care

ental insurance generally encompasses both routine and emergency dental procedures, with certain policies offering global coverage. Typically, these policies require you to pay for dental services upfront, after which you can submit a claim to your insurer for reimbursement. However, it is important to recognise that not all policies are identical.

Numerous private dental practitioners impose fees for their services. It is advisable to consult your insurance policy for details regarding its dental coverage.

If you are experiencing dental discomfort, please reach out to a member of our team for assistance, and they will help you obtain the necessary care.

### Frist Aid

If you or another student has an accident or needs urgent medical attention, please come to the Main or Student Services Offices where the assistance staff is located.

### Prescription Medications

Remember to bring enough of your prescribed medication with you as Irish pharmacists will not dispense a foreign prescription. International customs agents may ask you questions about your medication upon your departure or arrival, so be sure to pack it carefully.

Bring any important medical records (blood type, prescriptions, x-rays) that might be useful for medical care abroad as well as contact information for your health care providers at home.

### Mental Health and Wellbeing

If you are experiencing mental health difficulties, there are several options for support. You can speak to the YL Coordinator or a member of the EP Staff, they will help you or can recommend an appropriate service for you.

We can provide immediate support on:

- Pre-existing health Concerns/ Mental health
- Wellbeing
- Anxiety
- Culture shock/ Homesickness
- Confidential Support in a private room for one to one or via WhatsApp

If they are severe conditions, we can suggest one of the credited centers to receive professional assistance.

### Emergency and First Aid

If you or someone else has a serious accident or needs immediate medical help:

- Call 112 in case of fire, a medical emergency or if you need the police (in Ireland the police force is the Gardai).
- Inform the EP office or use the emergency phone – staff will assist you immediately
- Paramedics will provide an initial check and help determine further steps

### Fire Safety

If you discover a fire, press the fire alarm button on the nearest alarm. Leave the building immediately via the fire exit. Make sure you tell a member of EP staff exactly what happened so they can call 112. If you hear the fire alarm, leave the building immediately. Do not run, or stop to collect your belongings. EP staff will guide you to the fire exit. Go to the assembly point. Follow any instructions given by a member of EP staff and do not go back into the building until you are told to do so by EP staff.

### Personal Safety & Protecting Your Belongings

Dublin is generally a safe place but, as with a lot of big cities, you should always be alert. Some tips are: Be alert when you are walking alone at night. Avoid carrying large amounts of cash. Do not leave your belongings unattended. In Ireland, you do not need to always carry your identification card or passport with you, you can keep it at home and carry a picture of your ID on your phone or a photocopy in your bag.

We strongly recommend you take out insurance for your personal belongings, especially cameras, music players, mobile phones and laptops. Personal items cannot be covered by English Path homestay or residence insurance





## What you can expect from EP

At EP, we care about you. Your safeguarding and wellbeing are very important to us. We strive to ensure your stay is surrounded by a safe and stable environment so you can focus on enjoying your experience, learning, and growing.

Following norms and rules helps create a respectful and supportive atmosphere where everyone can thrive and get along.

At English Path (EP), our mission is to provide high-quality, motivating English courses that help students:

### Learn

We aim to help you improve your English skills to achieve your personal goals. That's why we employ excellent, experienced, and dynamic teachers who maintain high teaching standards.

### Excel

We want all students to do their best. Our creative and challenging classes are designed to bring out your full potential. At the end of your course, you will receive a certificate showing your achieved level.

### Grow

Language learning is a great way to build confidence and grow as a person. Experiencing other cultures helps broaden your horizons. Our lessons and activities are designed to support your personal development and help you flourish during your EP experience.

As part of your journey with EP, you will also receive:

- A friendly and efficient service from the Young Learners (YL) Team to support you with any queries, problems, or questions.
- An initial placement test by the Academic Team to ensure you are placed at the right level.
- A modern, clean, safe, and well-lit environment to study in.
- An engaging activity programme with free and paid options, linked to your study programme to enhance your learning.
- Advice on further studies, such as exam classes, further or higher education.

## What we expect from you

### We cordially invite you to:

- Attend the school's induction presentation which contains important information about your stay.
- Read the student handbook to make the most of your stay with us.
- Speak English at all times.
- Be punctual and attend your classes on time.
- Tell the EP staff if you are not feeling well, we need to keep the school updated about any absences.
- Attend all your classes. A minimum of 100% attendance is required, in all our Young Learner programmes.
- Food and drinks, other than water are not allowed in class.
- Do not use your phone during class time unless asked by your teacher.
- Keep Student Services informed of any changes in your personal circumstances. Your wellbeing and safety are very important to us.
- Respect and adhere to all the school's policies which are available on the website.

### Respect and Responsibility

- Cyber or in-person bullying or harassment will not be tolerated.
- At EP we observe the British values of democracy, rule of law, individual liberty, and respect for other people's values and beliefs.
- Smoking is not permitted anywhere inside the school buildings. Smoking is banned in all public buildings in Dublin including bars, restaurants, shops, stations, cinemas and on all public transport.
- The country has strict laws against the use of illegal drugs and punishments can be very heavy. You are strongly advised not to use illegal drugs during your stay.
- If you're under 21, it's against the law for someone to sell you alcohol, to buy or try to buy alcohol, and for an adult to buy or try to buy alcohol for you.

Students may be asked to leave their course early if they do not follow the Code of Conduct or EP's Disciplinary Policy.

### A Final Note

We are happy to welcome you to EP Dublin. Let us begin our journey together filled with new discoveries and experiences.

It's your attitude that helps us do great things in different ways. You inspire us to keep improving, and it's your enthusiasm that drives us to do our best.

Let's encounter new possibilities, embrace learning, and create memories for life.

Let's enjoy the ride together!

#memoriesforlife



# Life in Dublin

## Leisure time



### Zú Bhaile Átha Cliath (Dublin Zoo)

In Phoenix Park established and designed in 1830 by Decimus Burton. Today it focuses on conservation projects, breeding programmes, and growing awareness for animals.



### Games of Thrones Studio

This immersive and interactive experience takes visitors beyond the Seven Kingdoms and into the world of Game of Thrones like never before.



### EPIC The Irish Emigration Museum

Covers the history of the Irish diaspora and emigration to other countries.



### The Howth Cliffs

Over 10 miles of hiking and walking trails with views of Lambay's Island, Ireland's Eye, the village of Howth, and the gorgeous, rocky coastline.

# Life in Dublin

## Cultural



### National Gallery of Ireland

The National Gallery of Ireland, located in central Dublin, offers a rich collection of European and Irish art. Highlights include works by Caravaggio, Vermeer, and Jack B. Yeats, all displayed in a beautifully restored and welcoming space.



### Samuel Beckett Bridge

The Samuel Beckett Bridge in Dublin is a striking, harp-shaped structure spanning the River Liffey. Designed by Santiago Calatrava, it blends engineering and art, and has become an iconic symbol of the city's modern architecture.



### St. Patrick's Park

St. Patrick's Park, nestled beside Dublin's famous cathedral, offers a peaceful green escape in the heart of the city. With its landscaped gardens, fountains, and views of St. Patrick's Cathedral, it's a perfect spot to relax and reflect.





### The Coddle

A speciality from Dublin and is sort of a peasant dish. It was originally made to use up leftovers. There isn't a specific recipe to it but it traditionally includes sausages, rashers, potatoes, onions and herbs.



### Barmbrack

This is a sweet cake made with bread with added sultanas and raisins. Often shortened to brack, the name comes from the Halloween Brack that used to contain various objects.



### The Colcannon

Typical Irish dish is made of mashed potatoes with kale or cabbage. This dish is generally served for Halloween and is fairly ancient.



### Soda bread

This authentic bread has become a classic of the Irish food scene and the recipes are passed from parents to the child for generations. You can find it in literally every bakery in Dublin.



### Dublin Castle

A historic castle right in the heart of the city! With round towers and fancy rooms, it takes you back in time—from the Middle Ages to today. Official events still happen here!



### Malahide Castle

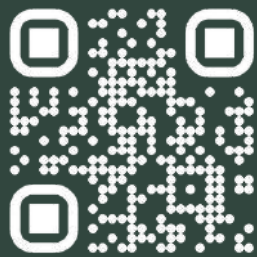
Close to the sea, this castle is surrounded by a huge park. You can explore old furniture, walk through beautiful gardens... and maybe even spot a friendly ghost!



### Drimnagh Castle

A real medieval castle with water-filled moats! It's less famous but super fun, especially if you like knights. You can even learn how people lived long ago.





@englishpathschools

English Path Dublin, 1 Clarinda Park N, Dún Laoghaire, Dublin, A96 H5X6, Ireland



## All Young Learners centers

### EP Greenford

891 Greenford Road, Greenford  
UB6 0HE

### EP Stratford

GBS Stratford Campus, 260 High  
Street, Stratford, London E15 2JA

### EP Middlesex

The Burroughs, London NW4 4BT

### EP Dublin

Clarinda Park North, Dun  
Laoghaire Co. Dublin Ireland

### EP Madrid

P.º de Recoletos, 35, Centro,  
28004 Madrid

### EP Paris

98 Rue Didot, 75014 Paris, France

### EP Malta

West Block Marguerite  
Mangion Street St.  
Julian's Malta STJ 3180

### EP Dubai

English Path Block 5, Dubai  
Knowledge Park, Al Sufouh 2,  
Dubai, United Arab Emirates

### EP Riyadh (locals only)

.Gernaata Square QPRR+3F8  
عراش رفعجوبا روصنملا,  
Riyadh 13241, Saudi Arabia

### EP Toronto

36 Victoria St, Toronto, ON M5C  
1H3, Canada

### EP Brisbane

Level 3/4 115 Queen Street  
Brisbane, Queensland 4000,  
Australia