



Young
Learners

2026

Paris

Student Handbook



Contents

Vision, Purpose, Mission and Values	1
Mental Health and Wellbeing	2
About City	3
About School	5
Safety, Welfare and Safeguarding	7
Holidays	10
First Day at School	11
About your Course	13
How to Practice	15
Placement Test	17
Timetable	18
Accommodation	19
Recommendations	21
Location and Travel	23
Living Cost	24
Staying Safe and Respectful	25
Expectations	27
Code of Conduct	29
Life in City	31
Leisure and Supervision	35
Support for Parents	37



We're so excited to have you with us. Whether you're here for a short stay or a longer journey, you're now part of a vibrant, supportive community across amazing cities like London, Dubai, and Malta. Our team is here to help you learn, grow, and make unforgettable memories. If you need anything, just reach out, we're always happy to help.

Enjoy the journey, and welcome to the EP family!

VISION, PURPOSE, MISSION AND VALUES

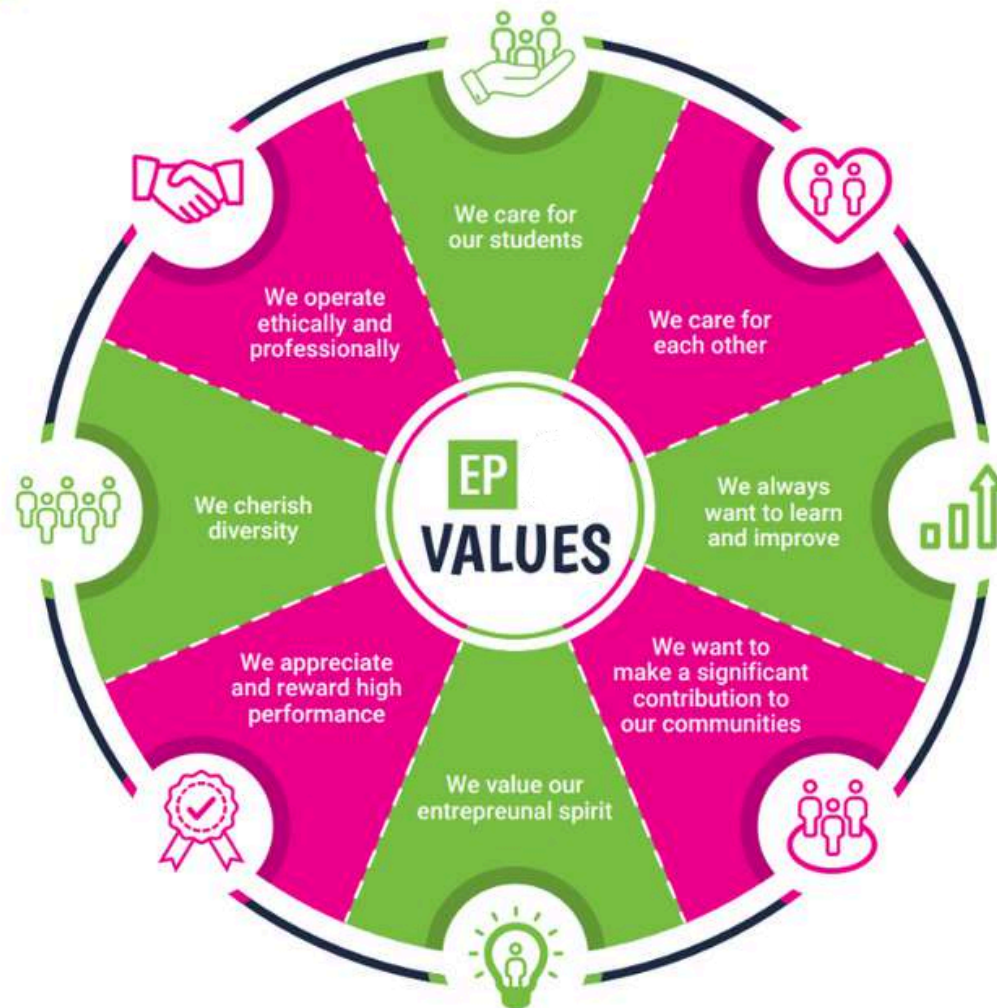
What can you expect from the school?

Vision: To create the world's most accessible and innovative language school that changes lives through education that makes a fundamental difference to living standards.

Purpose: To establish and maintain a singular cross-cultural communication tool in a divided world, bringing people together through a common language. People who can communicate without barriers are more likely to work together for the common good. That is the reason for EP's existence. We believe that everyone has the right to education and language is often the first step.

Mission: A world in which every person can communicate using a common language removing inequality and creating a level playing field. Courses that stimulate and challenge. Students that learn, excel and grow.

Values:



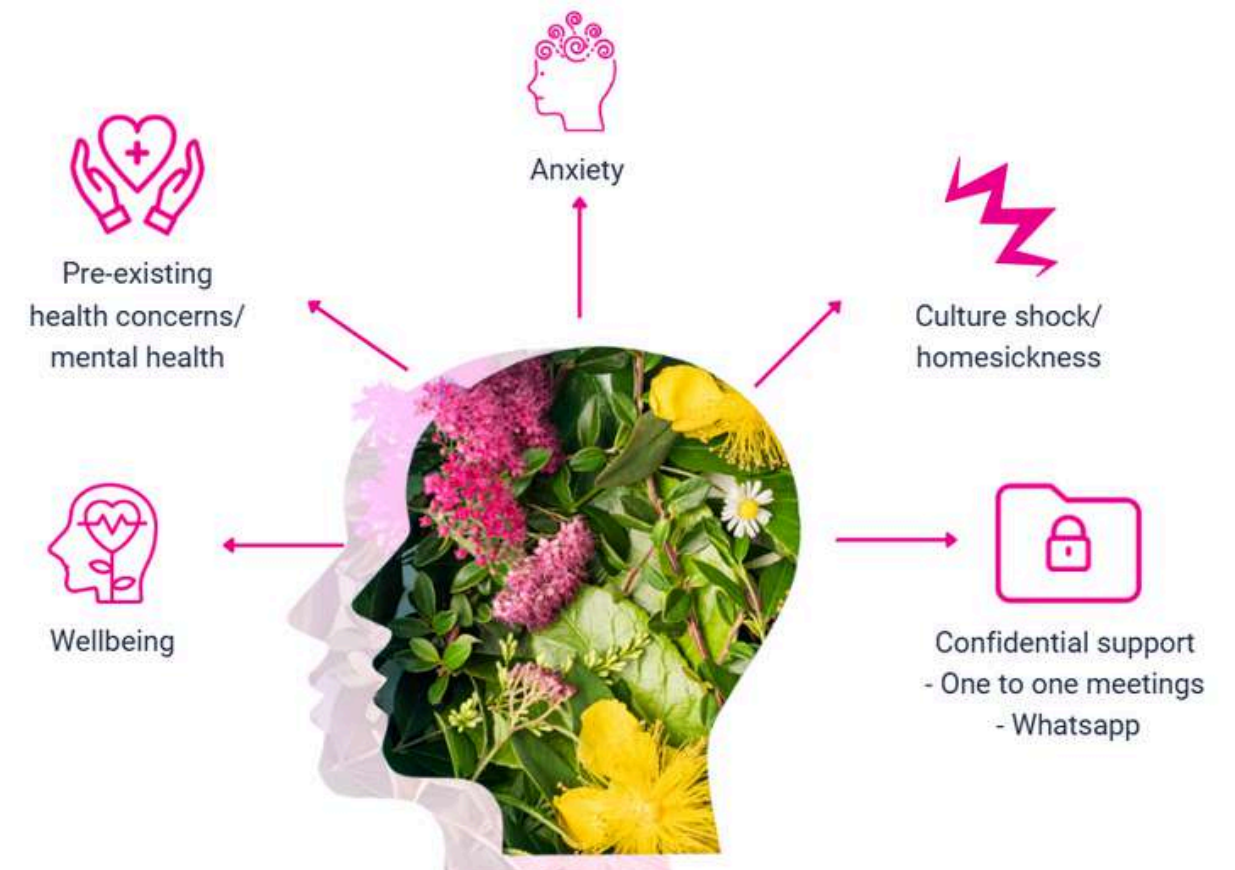
MENTAL HEALTH AND WELLBEING

How can we help?

If you are experiencing mental health difficulties, there are several options for support. You can speak to the YL Coordinator or a member of the EP Staff, we will help you or can recommend an appropriate (professional assistance) service for you.

- Pre-existing health Concerns/ Mental health
- Wellbeing
- Anxiety
- Culture shock/ Homesickness
- Confidential Support in a private room for one to one or via WhatsApp

EP holds your health and wellbeing at heart so should you need help, remember that EP staff is here to support you.



24/7 EMERGENCY PHONE NUMBER: +33 753 197 437

About Paris

Paris was founded in the 3rd century by a community of Celts. Today, it is one of the best places to be an international student. Paris has a unique culturally rich history filled with an active academic life and vibrant artistic scene. As an international student living abroad to learn French, you can learn foreign language and visit the iconic landmarks, explore the exhibits at the famous museums, enjoy the culinary delights, and the pace of living in a city that keeps on moving and changing with times. You can achieve all this with EP.



Famous landmarks

Eiffel Tower, Champs-Élysées, Centre Pompidou, Musée du Louvre, Notre-Dame cathédral, Palais Opéra Garnier, Galeries Lafayette

City personality

Academic, active, artistic, big city, bike-friendly, business capital, creative, moving, multi-cultural, eco-friendly, foodie scene, historical, friendly, green, iconic city, modern, unique, vibrant, youthful, world-renowned capital

What makes this city unique?

Paris is unique due to its unparalleled blend of history, culture, art, and romance; encapsulated within its iconic landmarks, culinary delights, and vibrant atmosphere.

Transport within a 15-minute walk

Metro, bus, tramway and RER.

Restaurants within a 15-minute walk

American, British, Chinese, French, Greek, Indian, Italian, Japanese, Korean, Mexican, Seafood, Thai, Vegetarian, Moroccan. Street food and gastronomy at each corner.

Alternative things to do

Get lost among the many museums, touristic sites, exhibitions and events all year long!

5 Reasons to choose this city

- 1 A well-connected city: nine train stations, two airports. True freedom.
- 2 A beautiful city with rich architectural diversity.
- 3 Home of gastronomy and a variety of cuisine.
- 4 European capital of culture (historical sites & museums).
- 5 Within the city there are seven universities and ten others nearby.



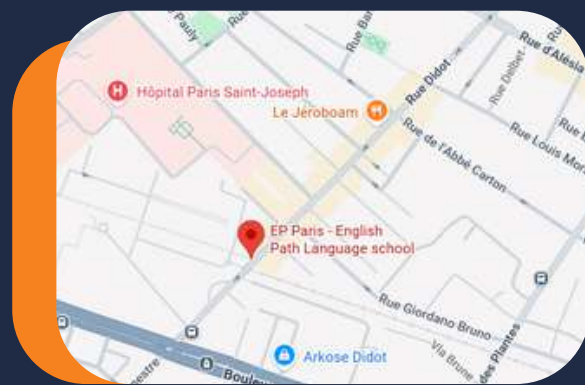
 Staff




Meet the team

Why choose to study in our EP Paris School?

- Located within Paris, in a safe and educational environment
- Minutes from subway station and buses
- Interesting & varied courses offered
- New installations, and high-end equipment
- Experienced customer experience & academic team



Find us on Google maps











 EP Paris: 98 Rue Didot, 75014 Paris, France

At this address since: 2024

 Emergency: +33 753 197 437

Close to your EP school

Our centrally located school is walking distance to:

	Cafes and restaurants	1-5 minutes
	Grocery store	4 minutes
	Post office	5 minutes
	Hospital	9 minutes
	Bank/ATM	5 minutes
	Montparnasse train station	25 minutes
	Subway station	8 minutes
	Bus stop	2-5 minutes
	Mall	17 minutes
	Gym	14 minutes

Services & facilities

English Path and EMA, our private business school, are part of Global Education Group. Together, our students share fantastic and modern university style facilities. At EP Paris we have the following facilities:

Buildings: 1
Floors: 2
Total number of classrooms: 3+

School facilities: Student lounge, self-study area with PC equipped, Wi-Fi (free), elevator for students with mobility issues, modern & spacious classrooms with smart TVs.

Other services provided: Activity programme, airport transfers, medical insurance.

Levels of English/French offered: All levels.

Reception: The friendly student services staff can direct you to the EP YLs offices and classrooms. A student services officer and an academic coordinator will always be present to answer any questions you may have.



Your EP Paris Welfare & Safeguarding Team

Do you have a question?

About your class, personal, medical and your accommodation?



Amy Martin
Student Services
Officer

To speak to a member of staff please call:

 **+33 159 435 661**

Call us 24 hours per day, 7 days per week.

SAFETY, WELFARE AND SAFEGUARDING

First Aid

If you or another student has an accident or requires urgent medical attention, please come to the Main Office. If you are unable to walk, please contact us using the Emergency Phone.

Personal safety and looking after your valuables

Our campuses are safe, but please stay alert, particularly in tourist areas. Here's some advice to help you enjoy a safe and worry-free visit.

- Be alert when you are walking in crowded places.
- Do not walk with your phone in your hand if you are not using it.
- Place your valuables (such as phone and wallet) in inside pockets or in your bag.
- Avoid carrying large amounts of cash unless you know you need to pay for something.
- Do not leave your belongings unattended.

Fire safety

If you discover a fire: Press the fire alarm button on the nearest alarm. Leave the building immediately via the stairs and fire exit. Make sure you tell a member of EP staff exactly what happened so they can call the Fire Services.

If you hear the fire alarm: Leave the building immediately via the stairs and fire exit. Do not run, use the lift or stop to collect your belongings. EP staff will guide you to the fire exit. Go to the assembly point and stay with your class and teacher there.

Follow any instructions given by a member of EP staff and do not go back into the building until you are told to do so by EP staff.

Reporting Concerns or Abuse

If you ever feel unsafe, worried, or uncomfortable, whether because of another student, a staff member, or someone else, you should speak to a member of staff immediately.

You can talk to:

- Your Teacher or Activity Leader
- The Welfare Manager
- The Designated Safeguarding Lead (DSL)
- Our YLs Centre Manager

If you don't feel comfortable talking to someone in person, you can write a note and leave it with a staff member or use our welfare email: younglearners@englishpath.com.

We take all concerns seriously. We also have a whistleblowing policy, this means anyone can report unsafe or inappropriate behaviour, and it will be dealt with confidentially and professionally.

24/7 EMERGENCY PHONE NUMBER: +33 753 197 437

Holidays

2026

1 Jan 2026

06 Apr 2026

01 May 2026

08 May 2026

14 May 2026

25 May 2026

14 Jul 2026

15 Aug 2026

01 Nov 2026

11 Nov 2026

25 Dec 2026


01 Jan 2027

The school will be closed during the holidays. Please make sure to book your course/accommodation accordingly. Public Holidays are subject to change according to government announcements.

When the school is closed on a Monday, new students start on Tuesday.

Course days that fall on a public holiday are not reimbursed. The dates are observed as holidays in the year.

If you arrive on a week where the Monday is a holiday, your first day of school will be a Tuesday.

 **Need help?
Not satisfied?
Have a problem?**

At EP we believe that communication and an open-door policy is key to efficiently resolving any issue you might have. If you need help, are not satisfied with one of our services or you need advice, please talk to our staff at school. They will be able to help and assist quickly with any concerns you might have.

First day at school

Feature	Tuition Only	Day Camp	Full Experience
Accommodation	✗	✗	✓
Lunch Provided	✗	✓	✓
Airport Pickup	✗ Can be requested	✗ Can be requested	✓
Evening Activities	✗	✗	✓

Here's a detailed breakdown*

Tuition only - Timetable

Arrival	Afternoon Classes	Evening
08:30 Welcome, school tour and induction	14:00 - 15:00 Lesson 1 15:00 - 15:20 Break 15:20 - 16:20 Lesson 2 16:20 - 16:40 Break 16:40 - 17:40 Lesson 3	18:30 Student pick-up (by parents/guardians)

Day camp - Timetable

Arrival	Morning	Afternoon	Evening
08:30 Welcome, check-in, residence tour and induction	08:30 Leisure time and meet the team	13:00 Lunch 14:00 Lessons start	18:00 Student pick-up (by parents/guardians)

Example Week for Full Experience Students

28 JUN Activities are subject to change due to weather conditions, availability or any other unforeseen event.

Time	7:00 - 8:30	8:30 - 12:30	12:45 - 13:45	14:00 - 17:45	18:30 - 20:00	20:00 - 21:30	22:00
Sunday	Arrival/Departure Day / On Campus Activities						
Monday		Eiffel Tower Explorer Adventurer Discoverer				Night walk on Pont Neuf and in the Saint-Michel District	
Tuesday		Visit to the Grand Palais, Petit Palais & Pont Alexandre III		LESSONS		Karaoke Night	
Wednesday	Breakfast	Centre Pompidou, Stravinsky Fountain 59 Rivoli, Atelier Brancusi church St Eustache	Lunch			Night walk on Boulevard Haussmann	Good Night
Thursday		Tour of the Marais District: Hôtel de Sully, Place des Vosges, Musée Carnavalet & Village St Paul				Culture Night	
Friday		Parc de la Villette, gardens, canals & the architecture of the Cité des Sciences				Graduation Celebration	
Saturday	Excursion to the Château and Gardens of Fontainebleau						

Full experience - Timetable

Arrival	Morning	Afternoon	Evening	Bed time
08:30 Welcome, check-in, induction	07:00 Breakfast 08:30 Leisure time	13:30 Lunch 15:00 Lessons start	18:30 Onwards Dinner and evening activities	22:00 Bed time

*Kindly confirm the exact timings and pick-up locations with the local teams.

About your course

Teaching methodology

At EP we use the communicative approach which means:

- A focus on speaking
- Interactive lessons
- Noticing students' gaps and reacting to them
- Going beyond the textbook
- English for real life outside the classroom
- Understanding each student's individual needs

All EP teachers are trained in this approach from their first day, so students have the same experience in all levels at all EP locations.

School material

Books: We use a range of age-appropriate teaching materials designed specifically for young learners.

Additional material used: Audio, Digital Presentation Material, Authentic Materials.

Students

Average Number of students per class: 15

Minimum age of students: Can vary

Average age of students: Can vary

Nationality mix: Can vary

End of course certificate: you will receive a course certificate at the end of your course.

Extracurricular activities

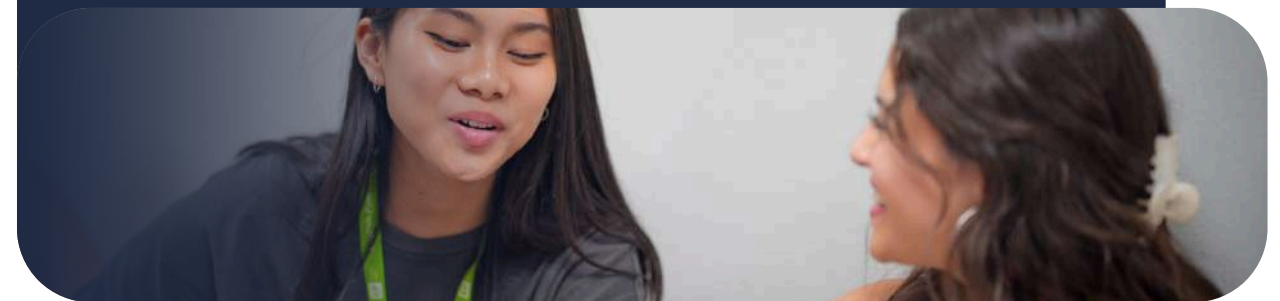
- Placement test to ensure accurate placing in levels
- Varied course materials
- Continuous progress monitoring

Library and Study area

There is a bright study area available for students, offering a great space to support your learning. You'll also find open spaces where you can work with classmates and access the internet.

How to

improve your language skills during or outside of your course



Study skills

Study Skills refer to the ability to frame and improve our learning. For example, what do we do when we learn a new word? Do we make notes? How? It's very important that we are organised in the way we learn, so that we have a much better chance of remembering the language and using it correctly in the future.

We would like to share with you some ways to keep learning and improving your English skills. If you practice these Study Skills, they will help you to continue your English language learning wherever you are.

Listening, Reading and Writing

What to listen to?

Try to listen to as many different types of spoken language as possible to improve your listening.

- Music and songs, TV shows, the news and films
- Speeches and interviews
- Audiobooks

What to write?

Think about the language you've learnt that week and try the following:

- Write an email to a friend/your teacher
- Write a diary/journal entry each day
- Write your shopping list in English

What to read?

There's so much you can read to practice your skills.

- Find an interesting article online?
- Choose a book you've read in your own language and get reading!
- Find an e-book and read on your daily commute to work or studies.

How to

practice vocabulary?



When you record vocabulary, you should also include longer phrases like:

phrasal verbs (e.g. get away with),
multi-word expressions (e.g. How's it going?),
idioms (e.g. raining cats and dogs),
and collocations (e.g. take a chance).

Quizlet 



Download the [Quizlet app](#) – create your own set of flashcards, practice and test yourself!

Cut strips of paper or use index cards. Using your Language Bank, write a word on one side and the translation or definition on the other. Lay the cards on a table and test yourself by placing either all the language sides or all the translations/definitions face down and checking your memory.

Create two cards for each word, one with the word, one with its translation. Spread all the cards on a table and play a game of Snap! Here's how:

- Make two cards for each word and its translation.
- Place all cards face down on a table.
- Turn over two cards at a time.
- If a word and its translation match, you have a Snap!
- Put matched cards aside and continue until all are matched.
- Try timing yourself to complete the game as quickly as possible.



Other useful websites for Learning and Practice

- [bbclearningenglish.com](#)
- [englishclub.com](#)
- [lyricstraining.com](#)
- [ted.com](#)
- [voscreen.com](#)

Exam Practice

- [flo-joe.com](#)
- [cambridge.org](#)
- [ieltspeaking.co.uk](#)
- [ieltsliz.com](#)

Grammar, Pronunciation and Vocabulary

- [bbclearningenglish.com](#)
- [englishclub.com](#)
- [lyricstraining.com](#)
- [ted.com](#)
- [voscreen.com](#)

Extra tip: Using a dictionary

Dictionaries are a useful resource for researching different meanings, collocations, examples of use and standard pronunciation. Use a mono-lingual dictionary and focus on understanding the meaning rather than translation of individual words. Translating individual words can often lead to misunderstandings.

A great, big paper mono-lingual dictionary is best but Cambridge, for example, have an online advanced learners' dictionary at www.dictionary.cambridge.org, which is easy to use and provides examples of word use.

Placement Test

At EP, we use the CEFR (Common European Framework of Reference for Languages) to place you in the most suitable class for your age & level.

Prior arrival you have to complete a placement test (grammar, writing, and speaking) so we can place you into the right group. You'll be in a class with students who are at a similar level, so you can feel confident and make progress.

<https://forms.gle/DZZqGqZ15GaYaar27>

During the course, your teachers and our academic team will check your progress. You'll also complete a mid-course feedback questionnaire to help us improve your learning experience.

At the end of your programme, you will receive an EP Certificate of Attendance, which includes:

- Your name and course dates
- Your CEFR level
- Your attendance record

Timetable

Your classes will vary throughout the week. Monday to Friday, you will have a 3-hour lesson per day.

During the rest of the week, you will take part in:

- Half day activities

On excursion days, you will be provided with a packed lunch, and you will return to campus in time for dinner. On other days, after your morning activities, you will go to school for lunch and some free time before your 3-hour evening class, which includes two short breaks.

After class, it's dinner time, followed by evening activities. You'll then return to your accommodation before curfew (10:00pm/22:00)

Please remember:

- Students must not leave the premises unaccompanied.
- Curfew times and all school rules must be respected at all times for your safety and that of others.

Take a look at your accommodation

FIAP

Discover FIAP Paris, a vibrant and welcoming residence in the heart of the 14th arrondissement! Enjoy cozy rooms with private bathrooms, delicious on-site dining, and relaxing garden spaces, all just steps from metro stations that connect you to the best of Paris. Perfect for students seeking comfort, community, and convenience during their stay!

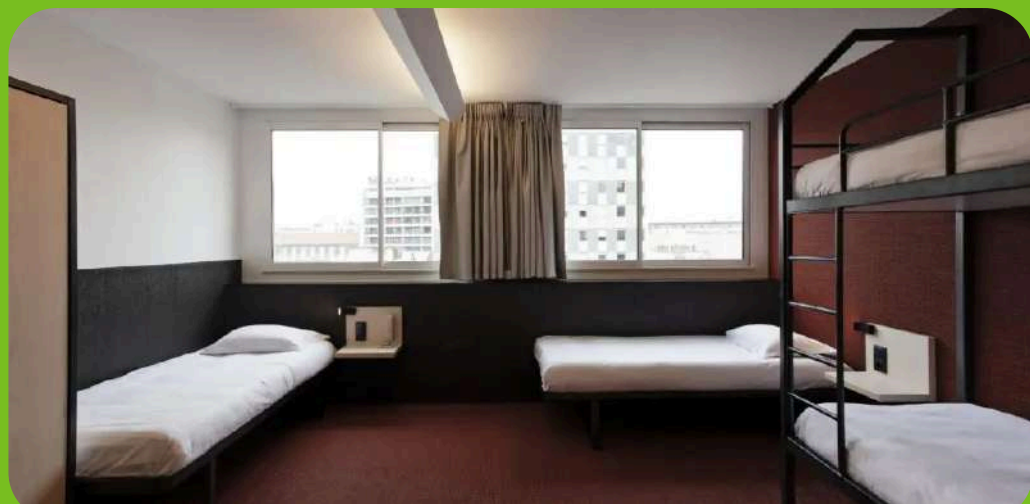
- 24-hour security
- Free high-speed Wi-Fi
- Welcoming community
- Food nearby
- Study rooms & open study area
- Green spaces
- TV lounge



Address:
30 Rue Cabanis, 75014 Paris

Your room

Shared



About the residence

Accommodation Type:

Residence with Shared En-suite Room (multiple single beds with a private bathroom inside the room)

Cleaning:

Weekly house-keeping

Laundry:

One wash load per week (fee may apply)

Neighbourhood:

Stay in a welcoming student residence with comfortable rooms, dining, and outdoor spaces, close to public transport and city attractions.

Visitors/guests:

Guests are not allowed.

Noise:

Residents are required to respect all other residents and maintain a level of noise that does not disturb others. Quiet hours are 10pm-8am.

Smoking:

No smoking allowed.

Reception/security desk:

24-hour reception including security personnel.

Minimum stay

The minimum stay is 1-week.

Check In: After 3pm

Check Out: Before 9am

What's nearby

Metro Station:	700 m away	Paris Charles De Gaulle airport:	37 km away
Hospital Sainte-Anne:	180 m away	Eiffel Tower	5 km away
Supermarket:	300 m away	Arc de Triomphe:	6.8 km away
Restaurants:	300 m away	Louvre:	4 km away
Catacombs of Paris:	800 m away	EP Paris campus:	2.2 km away
Parc Montsouris:	900 m away		



Recommendations

Checklist & other useful information

Here are a few important items that you should bring with you:

- Passport
- Acceptance letter
- Accommodation letter
- Proof of health/medical insurance
- Some cash and credit/debit cards
- Apple or Google Pay
- Weather appropriate clothing
- Adaptor for electrical appliances
- Prescription medication and medical records
- Emergency information
- Airport transfer
- Phone and charger(s)
- Toiletries

Clothing

Most students dress casually for classes, but you should bring nice clothes for going out and sportswear for sports and outdoor activities. The climate is changeable and maybe different from your own. The typical temperature is 25-30°C in the summer and 2 to 6°C in the winter, although it can drop below freezing. Bring waterproof clothing if you're arriving in the autumn or winter.

Electrical current

Standard voltage is 230 volts; remember to bring an adaptor with you or buy one when you arrive.

Arrival at the airport

When you land, connect to the airport Wi-Fi or use your mobile data to check for a welcome message from EP. Once you have collected your luggage and passed through security, look for a member of EP YL's staff wearing an EP YL's T-shirt or lanyard and holding an EP sign. You will be met at a clearly designated meeting point in the arrivals hall, where staff will welcome you and escort you safely to your residence.

When you arrive in Paris

Arriving in a new country can be confusing. Read the information below about your arrival and don't hesitate to ask airport staff for help if needed.

EP YL transfers

If you book an airport transfer, please send your flight details at least 2 weeks in advance. Students should arrive at the airport on the Saturday or Sunday before their course starts.

For departure, EP YL's staff will escort you to the airport, assist with check-in, and stay with you until your flight leaves. They will also help if there are delays or issues. Students are contacted 40 minutes before departure to ensure everyone boards safely.

Transfer help

If your flight changes or you need transfer help, call the emergency numbers and give your name, school (EP YL's), and location. Only use greeters with official EP YL's signage.

Join the school's WhatsApp group for daily updates and any urgent notices, including school closures or delays.

Pocket money

While we cannot tell you exactly how much money to bring, please remember that all essential costs are already included in your programme: accommodation, meals, lessons, activities, visits and tours. Most students therefore only need money for personal expenses such as snacks, souvenirs, laundry, or any optional activities they choose to do in their free time.

Some students choose to give themselves a weekly budget of around €250, which is usually enough to cover everyday expenses, laundry, local travel and small outings. You will need additional funds if you plan to take weekend trips or purchase higher-cost items.

We recommend bringing around €100 in cash for your arrival and using a debit or credit card for the rest of your spending. Please check with your bank in advance to ensure your card will work in UK ATMs.

Do not bring foreign currency, and avoid carrying large amounts of cash for safety reasons.

Location and Travel

In EP Paris, our YLs don't need public transport, we have private transfer to make your staying and commuting much more enjoyable. However, here you will find some information about walking distances.

Metro links



Didot	2 minutes
Porte d'Orléans	16 minutes
Alésia	16 minutes

Tramway



Didot	2 minutes
Portes de Vanves	9 minutes

Bus



From Didot to:	
Eiffel Tower	23 stops
Louvre Museum	19 stops

Walking distances



Franprix	1 minute
Carrefour Express	5 minutes
Auchan (Brune)	6 minutes





Living costs

(sample prices for items in this city)

- Bottle of water: €0.70
- Coffee: €2.70
- Can of coke: €2
- Meal out for two: €40
- Takeaway pizza: €18
- Sandwich: €5
- Local bus ticket: €2.15
(depends on the distance)

- Local subway ticket: €2.15
- Cinema ticket: €13.50

Useful apps

			
Deliveroo Order food and groceries.	Uber Get a ride, order food and pay services	Bonjour RATP To help you navigate the metro system	Maps Me To help you navigate the city offline

Staying Safe and Respectful:

What you need to know

Local customs

Local customs and traditions should be respected. Greetings are usually polite and reserved; a simple “hello” is common.

Public behaviour tends to be discreet, and loud or disruptive conduct is generally discouraged.

When taking photos, be mindful of others and avoid photographing people without permission, especially in busy tourist areas or residential neighbourhoods.

Dress appropriately when visiting cultural landmarks, museums, or religious sites.

Respecting local etiquette will help you enjoy the city’s culture, history, and atmosphere.

Laws

Respect for local customs: Many countries have cultural or religious expectations around behaviour and dress, especially at religious or official sites. Dress modestly where required and avoid public displays of affection if they may be considered inappropriate.

Alcohol: Rules around alcohol vary widely. In many places, drinking is allowed only in licensed venues, and consuming alcohol or being intoxicated in public may be prohibited.

Always follow local laws and guidance.

Drugs and medications: Possession or use of illegal drugs carries serious penalties in most countries. Some prescription or over-the-counter medicines may also be restricted, so check local regulations before travelling with any medication.

Photography: Avoid photographing security-related areas such as police stations, government buildings, or transport facilities, as this may be restricted. Always respect “no photography” signs.

Public behaviour: The city is generally safe, but disruptive, aggressive, or antisocial behaviour may result in fines or police intervention. Keeping a polite and considerate attitude in public spaces is expected.

Respect for local customs: During religious or cultural events, some areas may have specific expectations around behaviour, quietness, or dress. Please be observant and respectful.

LGBT considerations: The city is generally open and welcoming, but, as with any destination, be aware of your surroundings and show discretion in crowded or sensitive areas.

Student code of conduct

- Attend all lessons and activities and follow staff instructions.
- Curfew at 10:00 pm.
- Don’t travel alone at night, stay in pairs and keep to well-lit areas.
- Keep your phone charged, save emergency numbers, and don’t share personal details.
- No alcohol or tobacco (under 18), drugs, stealing, violence, or weapons.
- Rule-breaking may result in being sent home at your own cost, with no refund.

Traffic regulations

When having tours...

- Look at both sides of the road.
- When it is safe, go across the road – do not run.
- Keep looking and listening for traffic while you cross.
- Look out for cyclists and motorcyclists travelling between lanes of traffic.
- Do not walk diagonally across the road.
- Everyone in a vehicle must wear a seat belt.

Medical Insurance

All students must have valid medical insurance for the full duration of their stay.

You can use your insurance policy and EP YL’s staff will assist throughout:

- Understand how to contact doctors or hospitals in your insurance network
- Call ambulance or arrange an emergency visit
- Navigate the local medical system if needed

Prescription Medications

Specific countries may classify some over-the-counter medications (common elsewhere) as controlled substances.

Before travelling:

- Check the country’s official list of restricted medications.
- If bringing prescription medication, carry a doctor’s note with your full name, the medication name, dosage, and the prescribing doctor’s contact details.

Mental Health and Wellbeing

Moving to a new country can be challenging. If you feel anxious, homesick, or need support, speak confidentially with the Young Learners Coordinator or another EP YL staff member. One-to-one help is available at school or via WhatsApp, and staff can refer you to a professional if needed.

Accessing Healthcare

In an emergency, initial treatment may be provided without charge, but follow-up or additional care often needs to be paid for.

If you feel unwell, you can visit a local medical centre or clinic. Be aware that charges may apply, even if you have insurance.

Fire Safety

If you discover a fire:

- Press the nearest fire alarm.
- Leave the building calmly via the stairs or fire exits – do not use the lift.
- Inform a staff member immediately.

If you hear the fire alarm:

- Leave the building calmly via the stairs or fire exit.
- Do not run, use the lift, or collect belongings.
- Follow staff to the assembly point and stay with your group.
- Do not return until staff say it is safe.

Emergency and First Aid

If you or someone else has a serious accident or needs immediate medical help:

- Call emergency services
- Inform the EP YL office or use the emergency phone, staff will assist you immediately
- Paramedics will provide an initial check and help determine further steps

Personal Safety & Protecting Your Belongings

Like any busy destination, it’s important to stay alert and take basic precautions:

- Stay aware in crowded places.
- Avoid carrying large amounts of cash.
- Never leave belongings unattended.
- Be extra cautious in busy areas like shops, tourist sites, and public transport.
- EP YL and student residences provide a safe environment, but personal items are your responsibility. Stay alert and enjoy your time safely!

EP YL’s If you’re not feeling well, always tell a member of the team. They will support you and advise what to do.

What you can expect from EP YL's

At EP YL's, we care about you. Your safeguarding and wellbeing are very important to us. We strive to ensure your stay is surrounded by a safe and stable environment so you can focus on enjoying your experience, learning, and growing.

Following norms and rules helps create a respectful and supportive atmosphere where everyone can thrive and get along.

At EP, our mission is to provide high-quality, motivating courses that help students:

Learn

We aim to help you improve your English skills to achieve your personal goals. That's why we employ excellent, experienced, and dynamic teachers who maintain high teaching standards.

Excel

We want all students to do their best. Our creative and challenging classes are designed to bring out your full potential. At the end of your course, you will receive a certificate showing your achieved level.

Grow

Language learning is a great way to build confidence and grow as a person. Experiencing other cultures helps broaden your horizons. Our lessons and activities are designed to support your personal development and help you flourish during your EP experience.

As part of your journey with EP, you will also receive:

- A friendly and efficient service from the Young Learners (YL's) Team to support you with any queries, problems, or questions.
- An initial placement test by the Academic Team to ensure you are placed at the right level.
- A modern, clean, safe, and well-lit environment to study in.
- An engaging activity programme with free and paid options, linked to your study programme to enhance your learning.
- Advice on further studies, such as exam classes, further or higher education.

What we expect from you

We cordially invite you to:

- Behave well at all times and everywhere you are.
- Respect all school rules and policies (available on our website).
- Follow local etiquette and cultural norms.
- Be punctual and attend all classes. 100% attendance is required for all Young Learner programmes.
- Speak the language at all times, practice makes perfect!
- Get to know and interact with your classmates. It's a great opportunity to make friends.
- Attend the school's induction presentation and read the student handbook, both contain important information to help you make the most of your stay.
- Keep Student Services informed of any changes in your personal circumstances, we care about your safety and wellbeing.
- Tell an EP YL's staff member if you are not feeling well, we need to keep the school updated about any absences.
- Refrain from eating or drinking (except water) in the classroom.
- Do not use your phone during class unless your teacher asks you to do so.

Respect and Responsibility

- Cyber or in-person bullying or harassment will not be tolerated under any circumstances.
- At EP YL's, we follow the British values of democracy, the rule of law, individual liberty, and respect for other people's values and beliefs.
- Smoking is not allowed. It is also banned in all public indoor spaces in Dubai.
- There are strict laws against illegal drugs. Penalties can be very serious, do not use or possess illegal substances during your stay.
- If you a minor, it is illegal to buy, attempt to buy, or consume alcohol, or for anyone else to buy it for you.

Students may be asked to leave their course early if they do not follow the Code of Conduct or EP's Disciplinary Policy.

Code of Conduct

General Behaviour

At EP YL's, we want everyone to enjoy their time, learn lots, and stay safe. To help make that happen, we ask you to follow the rules below. These rules are here to protect you and everyone around you. Students may be asked to leave their course early if they don't follow the code of conduct or EP's disciplinary policy.

- Be kind, polite and respectful to other students, staff, group leaders and members of the public.
- Treat others as you would like to be treated. Bullying, harassment (in person or online), and discrimination will not be tolerated.
- Respect everyone's culture, religion, background and identity. We all come from different places and that makes our school special.
- Follow all EP YL's rules and instructions from staff, they are here to keep you safe.

● If a student breaks the rules, they may receive a warning, be removed from activities or classes, and in serious cases, parents or guardians will be contacted and the student may be sent home.

In Class

- Speak English at all times, this helps everyone improve!
- Be on time and attend all your lessons. You must attend 100% of classes, this is part of our programme.
- Phones are not allowed in class, unless your teacher asks you to use it for learning.
- No food or drink in classrooms (except bottled water).
- Tell a staff member if you feel unwell and can't attend class.

Personal Conduct & Safety

- Follow laws: no smoking, no drinking alcohol, no drugs.
- If you are a minor, it is illegal to buy or drink alcohol or smoke.
- Drugs are strictly forbidden, this is a serious offence.
- Do not leave the school or residence without permission or a staff member.
- Respect curfews/supervision rules, these are there to protect you.

Digital Behaviour

- Use phones, laptops and the internet responsibly and kindly.
- Do not post hurtful or inappropriate content about others.
- If you see something that makes you uncomfortable, tell a staff member immediately.

Reporting Concerns

- If you are unhappy, feel unsafe, or see something wrong, talk to a staff member
- You can also email our confidential welfare support team at: younglearners@englishpath.com

British Values

- Respect for the law
- Individual liberty and personal choice
- Equality and fairness
- Tolerance and respect for other cultures, beliefs and lifestyles

Life in Paris

Leisure time



Eiffel Tower

Paris's most iconic landmark and one of the world's most visited monuments, it rises 330 meters high and offers sweeping city views from its observation decks.



Notre-Dame Cathedral

A Gothic masterpiece from the 12th century, it features majestic towers and intricate stone carvings, drawing visitors even during its restoration.



Montmartre

A bohemian hilltop village with cobble streets and the stunning Sacré-Cœur, it once inspired great artists like Picasso and Van Gogh.



Moulin Rouge

Famous for its red windmill and dazzling cabaret shows, this historic venue is the birthplace of the can-can and a symbol of Parisian nightlife.

Life in Paris

Cultural



Louvre

Home to the Mona Lisa and Venus de Milo, this vast former palace is the world's largest art museum, crowned by a striking glass pyramid.



Centre Pompidou

Renowned for its inside-out design, it houses Europe's largest collection of modern art and offers rooftop views over Paris.



Giverny

Known for inspiring Monet's water lilies, this charming village features his flower-filled house and gardens, beloved by art lovers from around the world.



Croissant

Flaky, buttery, and golden, this classic French pastry is a breakfast staple found in every boulangerie across the country.



Baguette

Crispy on the outside and soft inside, this long, iconic loaf is a daily must-have and a symbol of French culinary tradition.



Boeuf Bourguignon

Slow-cooked in red wine with carrots, onions, and herbs, this hearty beef stew is a comforting dish from the Burgundy region.



Macarons

Delicate and colorful, these almond meringue cookies with ganache or cream filling are beloved for their crisp shell and soft center.



Musée d'Orsay

Housed in a beautifully restored former train station, this museum boasts an impressive collection of 19th and early 20th-century art, featuring masterpieces from Impressionism to Symbolism.



Musée de l'Orangerie

Nestled in the heart of the Tuileries Gardens, this intimate museum offers visitors a serene setting to admire an exquisite collection of Impressionist and Post-Impressionist paintings.



Musée Rodin

Set within a charming mansion surrounded by lush gardens, this museum showcases the evocative sculptures and drawings of Auguste Rodin, blending art and nature seamlessly.

Leisure and Supervision

Our Young Learner programmes include a full timetable of exciting cultural, educational, and social activities to help you enjoy the best of city life while making friends and practising your language in real-world settings.

Activities include sightseeing tours, cultural visits, sports, themed evenings, and excursions to iconic destinations such as museums and royal parks.

Weekly Activity Schedule

A weekly activity schedule is shared at the centre, during induction and a reminder is shared the day before of the agenda for next day. Please note:

- All activities are mandatory unless otherwise advised for specific reasons (e.g. illness).
- The programme has been carefully designed to balance learning, fun, and student welfare.

Supervision & Ratios

Student safety is our top priority. Supervision is provided at all times by trained staff:

- 1:20 ratio for students aged 13+
- 1:15 ratio for students aged 8–12

Staff roles are clearly allocated for each excursion, including first aiders, group leaders, and designated meeting points. Extra care is taken during transport, high-traffic areas, and late returns.

Before Every Excursion

Before any outing, you'll attend a compulsory safety briefing which covers:

- The destination and cultural context
- Emergency contact information
- How to stay safe and what to do if separated
- The name and phone number of your lead staff member

Free Time – Supervised Independence

During some city visits, short periods of free time are allowed in clearly defined areas.

You'll be asked to:

- Remain in small groups
- Share your live location with EP staff via mobile phone
- Check in at set times and return to the meeting point punctually

This helps you enjoy some independence while ensuring staff can support you at all times.

Support for Parents

At EP, we understand how important it is for parents to feel informed and reassured while their child is studying abroad. We are committed to clear and responsible communication.

Communication Protocol

In most cases, all communication with families will be made via the partner agent through whom the booking was arranged. This includes updates on:

- Attendance or unexplained absences
- Illness or medical concerns
- Behavioural or safeguarding issues


In the rare event of a serious emergency or where immediate contact is required, we may contact parents/guardians directly if it is deemed necessary for the child's safety or wellbeing.

Staying in Touch

- Students are encouraged to stay in regular contact with families
- Wi-Fi is available in both the residences and the teaching centre
- Phone or video calls can be made during free time, especially in the evenings

24/7 Emergency Support

We operate a 24-hour emergency contact number for urgent situations. This number will be shared before arrival and is available to agents and families.

 Please only use this number for genuine emergencies, as it may be needed to support a student in immediate need.

We are here to safeguard your child's experience and wellbeing at all times.

A Final Note

We are happy to welcome you to EP Young Learners. Let us begin our journey together filled with new discoveries and experiences.

It's your attitude that helps us do great things in different ways. You inspire us to keep improving, and it's your enthusiasm that drives us to do our best.

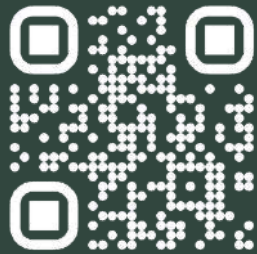
Let's encounter new possibilities, embrace learning, and create memories for life.

Let's enjoy the ride together!

#memoriesforlife



Young
Learners



@englishpathschools

98 Rue Didot
75014 Paris
France



All Young Learners Centers

EP Greenford

891 Greenford Road, Greenford
UB6 0HE

EP Middlesex

The Burroughs, London NW4 4BT

EP Dublin

Clarinda Park North, Dun
Laoghaire Co. Dublin Ireland
Summer School: UCD, Belfield,
Dublin 4, Ireland

EP Paris

98 Rue Didot, 75014 Paris, France

EP Malta

West Block Marguerite
Mangion Street St.
Julian's Malta STJ 3180
Summer School: WFFF+RH3, Sir
L. Prezios, Pembroke, Malta

EP Dubai

EP Block 5, Dubai Knowledge
Park, Al Sufouh 2, Dubai, United
Arab Emirates

EP Riyadh (locals only)

.Gernaata Square QPRR+3F8
عراش رفعجوبا روصنملا,
Riyadh 13241, Saudi Arabia

EP Toronto

36 Victoria St, Toronto, ON M5C
1H3, Canada

EP Brisbane

Level 3/4 115 Queen Street
Brisbane, Queensland 4000,
Australia