

Public German University Preparation

Course overview

Ages	17 and above
Duration	15 30 weeks
Entry Requirements	Level B1 - C1
Academic info	20 hours per week
Available in	EP Berlin
End of course certificate	✓

Course description

The Public German University Preparation Course is designed to give students the necessary language skills to enter a German University. Depending on their high school degree, this can be directly or via a Studienkolleg. Our course will not only get students to the required C1 Level German but also help them with practical skills needed like exam preparation or basic mathematical skills.

What is included?

- Semi-Intensive German – 20 hours of class time per week (25 lessons)
- 5 extra hours per week during the last 4 weeks of the course for TELC Exam preparation
- Placement test
- Pre-arrival information packs
- Online and in-person induction
- Welcome bag with free goodies
- Monthly course tutorials and skills test
- Conversation Club and Study Clinics
- Course materials
- Weekly tests and assignments
- Social programme
- EP neighbourhood discounts
- EP online exclusive discount
- End of course certificate
- English Path Alumni Online
- Scholarship for **FREE** additional speaking practice

How long will my course last?

The duration of your course will depend on your current language level.

Public German University Preparation package	Duration	Level (from, to)
	15 weeks	B2 to C1
	30 weeks	B1 to C1

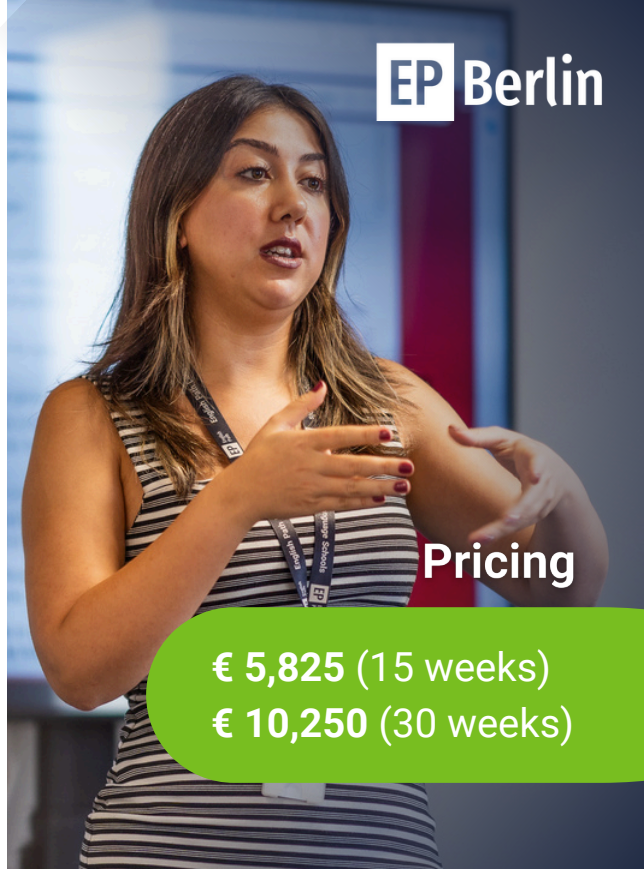
What you will learn

By the end of the course, you will know:

- Subject-specific vocabulary
- Maths in German
- Test strategy
- Language skills needed for the reading of related texts
- Core grammar subjects

Personal support you will receive

- 4 weekly tutorials with your teacher
- Personal progress reports on request
- Welfare support when and as needed
- Public University application support
- Visa support
- Career support
- Study clinics:
- » **FREE** one-to-ones with an Academic Manager
- » Weekly slots available to book.



Pricing

€ 5,825 (15 weeks)

€ 10,250 (30 weeks)

Entry process

1. Application form
2. Pre-arrival level test
3. Pay fees 4 weeks prior to starting your course
4. Begin your programme

Please note: At the end of your course, your Certificate will be issued if attendance has met all requirements (minimum 85%)

Course timings

Studienkolleg Preparation 3 hours 09:00 - 13:30

*Please, refer to EP Pricelist for course intensity or timings per campus.